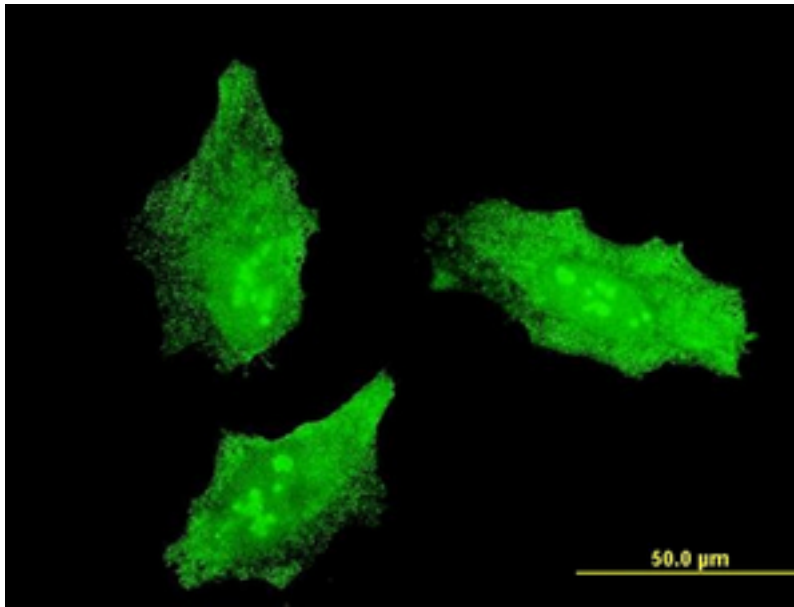


**MKI67 / Ki67 Mouse anti-Human Monoclonal (7B8) Antibody - LS-C197685 - LSBio**

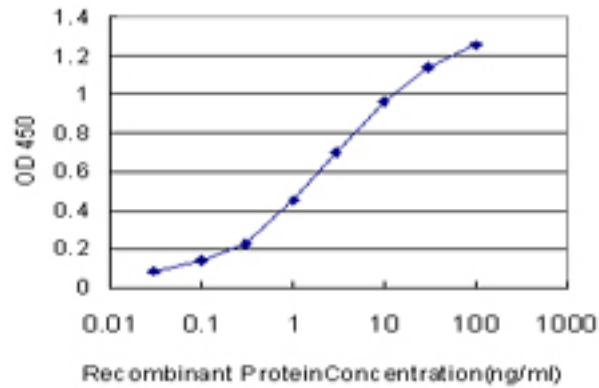
<b>CatalogID:</b>	LS-C197685
<b>Target:</b>	marker of proliferation Ki-67 (MKI67)
<b>Synonyms:</b>	MKI67 Antibody, Antigen KI-67 Antibody, Ki67 Antibody, KIA Antibody
<b>Host</b>	MKI67 antibody was produced in Mouse
<b>Clonality:</b>	Monoclonal
<b>Isotype:</b>	IgG2a,k
<b>Clone Name:</b>	7B8
<b>Immunogen Species:</b>	MKI67 / Ki67 antibody was raised against Human
<b>Antigen Type:</b>	GST fusion protein
<b>Immunogen:</b>	MKI67 / Ki67 antibody was raised against mKI67 (NP_002408, aa3157-3256 partial recombinant protein with GST tag. MW of the GST tag alone is 26 KDa.
<b>Specificity:</b>	Human Ki67
<b>Reactivity:</b>	Human
<b>Purification:</b>	Protein A purified
<b>Presentation:</b>	PBS, pH 7.4.
<b>Recommended Storage:</b>	Store at -20°C or lower. Aliquot to avoid repeated freezing and thawing.
<b>Usage Summary:</b>	Sandwich ELISA: Recombinant protein. Western Blot: Recombinant protein.
<b>Uses:</b>	Immunofluorescence (10 µg/ml), Western blot, ELISA (Optimal dilution to be determined by the researcher)
<b>Size:</b>	100 µg
<b>Concentration:</b>	0.5 mg/ml

**Immunofluorescence Image:**



Immunofluorescence of monoclonal antibody to MKI67 on HeLa cell . [antibody concentration 10 ug/ml]

**ELISA Image:**



Detection limit for recombinant GST tagged MKI67 is approximately 0.03 ng/ml as a capture antibody.

**Requested From:**

Japan

Laboratory Reagent For In Vitro Research Use Only

Not for resale without prior written consent from LifeSpan BioSciences, Inc.

Created on 9/27/2014

© 2014 LifeSpan BioSciences