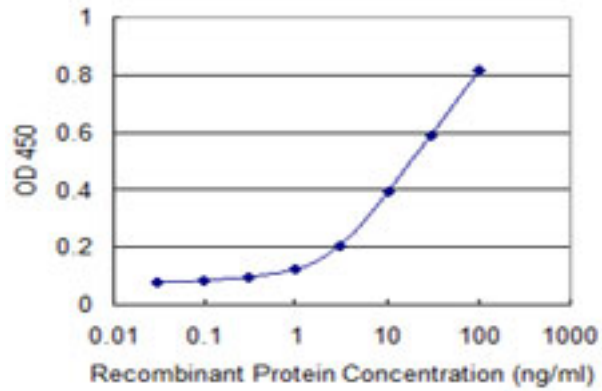


CLTC / Clathrin Heavy Chain Mouse anti-Human Monoclonal (2E5) Antibody - LS-C196938 - LSBio	
<b>CatalogID:</b>	LS-C196938
<b>Target:</b>	clathrin, heavy chain (Hc) (CLTC)
<b>Synonyms:</b>	CLTC Antibody, Clathrin, heavy chain Antibody, CLH17 Antibody, CLTCL2 Antibody, CHC Antibody, CHC17 Antibody, Clathrin heavy chain 1 Antibody, CLH-17 Antibody, KIAA0034 Antibody, Hc Antibody, Clathrin Heavy Chain Antibody, Clathrin, heavy chain (Hc) Antibody
<b>Host</b>	CLTC antibody was produced in Mouse
<b>Clonality:</b>	Monoclonal
<b>Isotype:</b>	IgG2a,k
<b>Clone Name:</b>	2E5
<b>Immunogen Species:</b>	CLTC / Clathrin Heavy Chain antibody was raised against Human
<b>Antigen Type:</b>	GST fusion protein
<b>Immunogen:</b>	CLTC / Clathrin Heavy Chain antibody was raised against cLTC (NP_004850, aa232-340 partial recombinant protein with GST tag. MW of the GST tag alone is 26 KDa.
<b>Specificity:</b>	Human CLTC / Clathrin Heavy Chain
<b>Reactivity:</b>	Human
<b>Purification:</b>	Protein A purified
<b>Presentation:</b>	PBS, pH 7.2
<b>Recommended Storage:</b>	Store at -20°C or lower. Aliquot to avoid repeated freezing and thawing.
<b>Usage Summary:</b>	Sandwich ELISA: Recombinant protein. Western Blot: Recombinant protein.
<b>Uses:</b>	Western blot, ELISA (Optimal dilution to be determined by the researcher)
<b>Size:</b>	100 µg

**ELISA Image:**



Detection limit for recombinant GST tagged CLTC is 0.3 ng/ml as a capture antibody.

**Requested From:**

Japan

Laboratory Reagent For In Vitro Research Use Only

Not for resale without prior written consent from LifeSpan BioSciences, Inc.

Created on 9/27/2014

© 2014 LifeSpan BioSciences