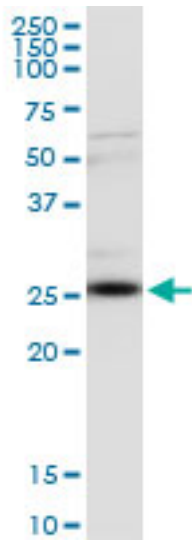


CLTA / LCA Mouse anti-Human Monoclonal (4E9) Antibody - LS-C196937 - LSBio

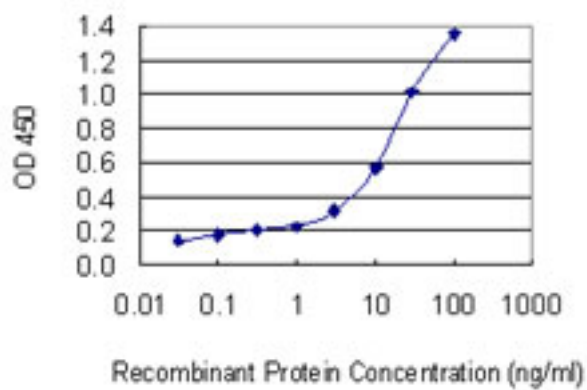
CatalogID:	LS-C196937
Target:	clathrin, light chain A (CLTA)
Synonyms:	CLTA Antibody, Clathrin light chain A Antibody, Clathrin, light chain A Antibody, LCA Antibody
Host	CLTA antibody was produced in Mouse
Clonality:	Monoclonal
Isotype:	IgG2a,k
Clone Name:	4E9
Immunogen Species:	CLTA / LCA antibody was raised against Human
Antigen Type:	GST fusion protein
Immunogen:	CLTA / LCA antibody was raised against cLTA (NP_001824.1, aa118-176 partial recombinant protein with GST tag. MW of the GST tag alone is 26 KDa.
Specificity:	Human CLTA / LCA
Reactivity:	Human
Purification:	Protein A purified
Presentation:	PBS, pH 7.2
Recommended Storage:	Store at -20°C or lower. Aliquot to avoid repeated freezing and thawing.
Usage Summary:	Sandwich ELISA: Recombinant protein. Western Blot: Tissue lysate, Recombinant protein.
Uses:	Western blot, ELISA (Optimal dilution to be determined by the researcher)
Size:	100 µg

Western Blot Image:



CLTA monoclonal antibody (M08), clone 4E9. Western Blot analysis of CLTA expression in human kidney.

ELISA Image:



Detection limit for recombinant GST tagged CLTA is 0.03 ng/ml as a capture antibody.

Requested From:

Japan

Laboratory Reagent For In Vitro Research Use Only

Not for resale without prior written consent from LifeSpan BioSciences, Inc.

Created on 9/27/2014

© 2014 LifeSpan BioSciences