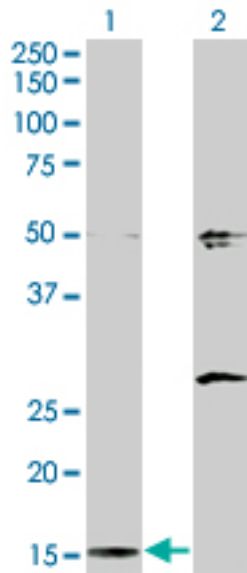


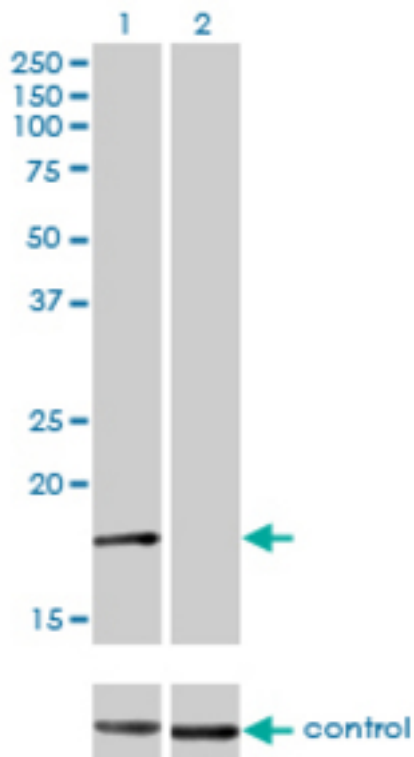
AP2S1 Mouse anti-Human Monoclonal (3E4) Antibody - LS-C196929 - LSBio	
<b>CatalogID:</b>	LS-C196929
<b>Target:</b>	adaptor-related protein complex 2, sigma 1 subunit (AP2S1)
<b>Synonyms:</b>	AP2S1 Antibody, AP17-DELTA Antibody, AP-2 complex subunit sigma Antibody, AP17 Antibody, CLAPS2 Antibody, HA2 17 kDa subunit Antibody, Sigma2-adaptin Antibody
<b>Host</b>	AP2S1 antibody was produced in Mouse
<b>Clonality:</b>	Monoclonal
<b>Isotype:</b>	IgG2a,k
<b>Clone Name:</b>	3E4
<b>Immunogen Species:</b>	AP2S1 antibody was raised against Human
<b>Antigen Type:</b>	GST fusion protein
<b>Immunogen:</b>	AP2S1 antibody was raised against aP2S1 (AAH06337, aa1-142 full-length recombinant protein with GST tag. MW of the GST tag alone is 26 KDa.
<b>Specificity:</b>	Human AP2S1
<b>Reactivity:</b>	Human
<b>Purification:</b>	Protein A purified
<b>Presentation:</b>	PBS, pH 7.2
<b>Recommended Storage:</b>	Store at -20°C or lower. Aliquot to avoid repeated freezing and thawing.
<b>Usage Summary:</b>	RNAi Knockdown: Antibody validated. Sandwich ELISA: Recombinant protein. Western Blot: Transfected lysate, Recombinant protein.
<b>Uses:</b>	Western blot, ELISA, RNA interference (Optimal dilution to be determined by the researcher)
<b>Size:</b>	100 µg

**Western Blot Image:**



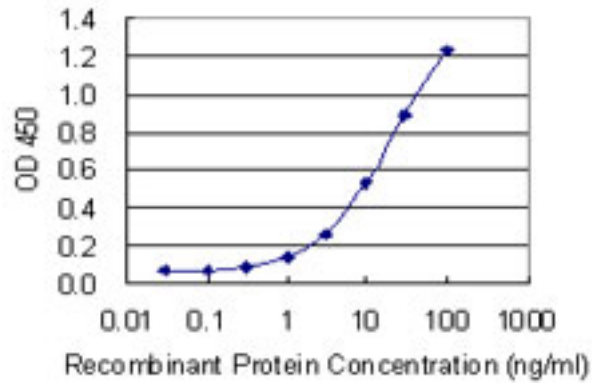
Western Blot analysis of AP2S1 expression in transfected 293T cell line by AP2S1 monoclonal antibody (M01), clone 3E4. Lane 1: AP2S1 transfected lysate (17 KDa). Lane 2: Non-transfected lysate.

**RNA interference Image:**



Western blot analysis of AP2S1 over-expressed 293 cell line, cotransfected with AP2S1 Validated Chimera RNAi (Lane 2) or non-transfected control (Lane 1). Blot probed with AP2S1 monoclonal antibody (M01), clone 3E4. GAPDH (36.1 kDa) used as specificity and loading control.

**ELISA Image:**



Detection limit for recombinant GST tagged AP2S1 is 0.3 ng/ml as a capture antibody.

**Requested From:**

Japan

Laboratory Reagent For In Vitro Research Use Only

Not for resale without prior written consent from LifeSpan BioSciences, Inc.

Created on 9/27/2014

© 2014 LifeSpan BioSciences