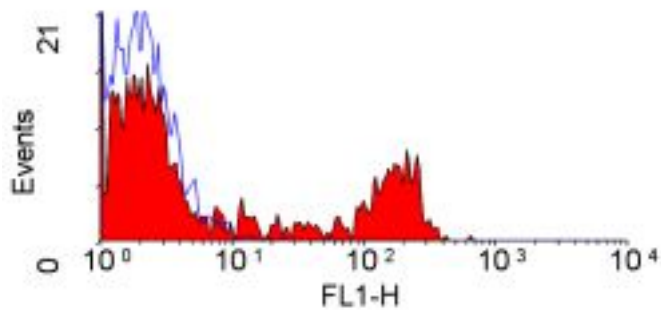


**CD8 Mouse anti-Bovine Monoclonal (FITC) (CC63) Antibody - LS-C188765 - LSBio**

<b>CatalogID:</b>	LS-C188765
<b>Target:</b>	CD8
<b>Host</b>	CD8 antibody was produced in Mouse
<b>Clonality:</b>	Monoclonal
<b>Isotype:</b>	IgG2a
<b>Clone Name:</b>	CC63
<b>Conjugations:</b>	Fluorescein (FITC)
<b>Immunogen Species:</b>	CD8 antibody was raised against Bovine
<b>Reactivity:</b>	Bovine, Goat, Sheep
<b>Purification:</b>	Protein G purified
<b>Presentation:</b>	PBS, 0.09% sodium azide, 1% BSA
<b>Recommended Storage:</b>	Long term: -20°C; Short term: +4°C; Avoid freeze-thaw cycles. Protect from light.
<b>Uses:</b>	Flow Cytometry (1:1) (Optimal dilution to be determined by the researcher)
<b>Size:</b>	100 tst
<b>Concentration:</b>	0.1 mg/ml

**Flow Cytometry Image:**



Flow cytometry of bovine peripheral blood lymphocytes with Mouse anti-Bovine CD8: FITC

<b>Requested From:</b>	Japan
Laboratory Reagent For In Vitro Research Use Only	
Not for resale without prior written consent from LifeSpan BioSciences, Inc.	
Created on 9/26/2014	
© 2014 LifeSpan BioSciences	