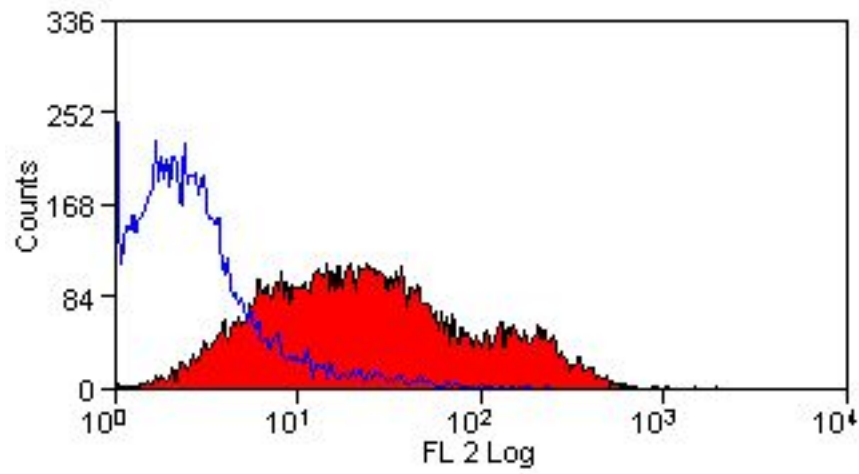


CD86 Mouse anti-Rat Monoclonal (RPE) (24F) Antibody - LS-C188425 - LSBio

CatalogID:	LS-C188425
Target:	CD86 molecule
Synonyms:	CD86 Antibody, Activation B7-2 antigen Antibody, B7-2 Antibody, B7.2 Antibody, B70 Antibody, CD86 molecule Antibody, CTLA-4 counter-receptor B7.2 Antibody, CD86 antigen Antibody, FUN-1 Antibody, LAB72 Antibody, BU63 Antibody, CD28LG2 Antibody, Ctla-4 counter-receptors b7.2 Antibody
Host	CD86 antibody was produced in Mouse
Clonality:	Monoclonal
Isotype:	IgG1
Clone Name:	24F
Conjugations:	R. Phycoerythrin (RPE)
Immunogen Species:	CD86 antibody was raised against Rat
Antigen Type:	Cells
Immunogen:	CD86 antibody was raised against hTLV-1 transformed Lewis-S1 cells.
Specificity:	Specifically recognizes rat CD86, otherwise known as B7-2, a type I transmembrane protein and member of the Ig superfamily, which acts as a ligand for both CD28 and CD152 (CTLA-4), and is primarily expressed on antigen presenting cells (APCs) including dendritic cells, and also on germinal centre B cells and macrophages. Like CD80, CD86 is an accessory molecule which functions in the CD28-CD80/CD86 co-stimulatory pathway, vital for T cell activation, crosstalk between T and B cells, and Th2-mediated Ig production. Clone 24F has been shown to block the co-stimulatory activity of rat CD86.
Reactivity:	Rat
Purification:	Protein G purified
Reconstitution:	Distilled water
Presentation:	PBS, 0.09% sodium azide, 1% BSA, 5% sucrose
Recommended Storage:	Store at +4°C. Do not freeze. Protect from light.
Uses:	Flow Cytometry (1:1) (Optimal dilution to be determined by the researcher)
Size:	100 tst

Flow Cytometry Image:



Flow cytometry of rat splenocytes with Mouse anti-Rat CD86:RPE

Requested From:

Japan

Laboratory Reagent For In Vitro Research Use Only

Not for resale without prior written consent from LifeSpan BioSciences, Inc.

Created on 9/26/2014

© 2014 LifeSpan BioSciences