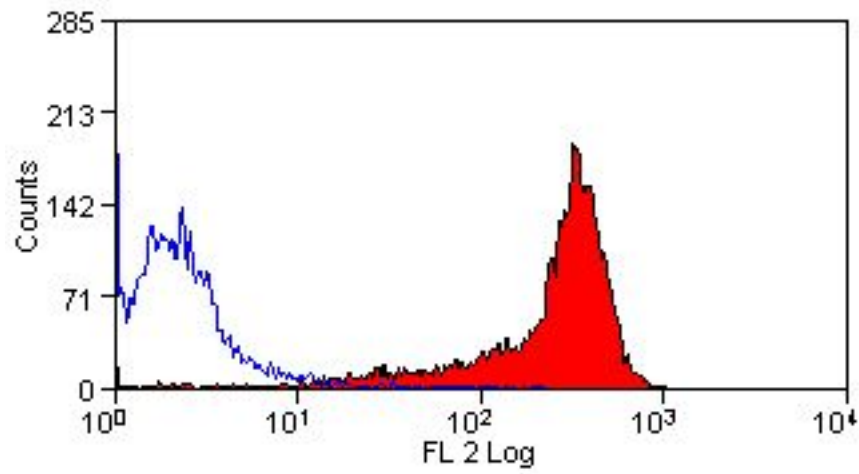


ITGA4 / VLA-4 / CD49d Mouse anti-Rat Monoclonal (RPE) (MRalpha4-1) Antibody - LS-C188418 - LSBio	
<b>CatalogID:</b>	LS-C188418
<b>Target:</b>	integrin, alpha 4 (antigen CD49D, alpha 4 subunit of VLA-4 receptor) (ITGA4)
<b>Synonyms:</b>	ITGA4 Antibody, 269C wild type Antibody, CD49D Antibody, IA4 Antibody, Integrin alpha-4 Antibody, Integrin alpha 4 Antibody, Integrin alpha-4 subunit Antibody, Integrin alpha-IV Antibody, VLA-4 Antibody, VLA-4 subunit alpha Antibody, CD49d antigen Antibody
<b>Family / Subfamily:</b>	Integrin / not assigned-Integrin
<b>Host</b>	ITGA4 antibody was produced in Mouse
<b>Clonality:</b>	Monoclonal
<b>Isotype:</b>	IgG2a
<b>Clone Name:</b>	MRalpha4-1
<b>Conjugations:</b>	R. Phycoerythrin (RPE)
<b>Immunogen Species:</b>	ITGA4 / VLA-4 / CD49d antibody was raised against Rat
<b>Antigen Type:</b>	Cells
<b>Immunogen:</b>	ITGA4 / VLA-4 / CD49d antibody was raised against rBL-2H3 rat basophilic leukaemia cell line.
<b>Specificity:</b>	Specifically recognizes rat CD49d, otherwise known as integrin alpha 4 chain/VLA-4, a 150kD type-1 transmembrane glycoprotein and member of the integrin alpha chain family, which acts as a receptor for fibronectin and CD106 (VCAM-1). CD49d is expressed broadly on T and B lymphocytes, monocytes, thymocytes, mast cells and dendritic cells and is involved in cell-cell interactions, mononuclear cell trafficking to sites of endothelial inflammation, and the adhesion of cells to the extracellular matrix. Clone MRalpha4-1 inhibits the in vitro and in vivo functions of CD49d. Studies have shown that in rat Peyer's patches, clone MRalpha4-1 inhibits the rolling and adherence of lymphocytes to postcapillary venules (PCV), and significantly inhibits the transendothelial migration of T lymphocytes.
<b>Reactivity:</b>	Rat
<b>Purification:</b>	Protein G purified
<b>Reconstitution:</b>	Distilled water
<b>Presentation:</b>	PBS, 0.09% sodium azide, 1% BSA, 5% sucrose
<b>Recommended Storage:</b>	Store at +4°C. Do not freeze. Protect from light.
<b>Uses:</b>	Flow Cytometry (1:1) (Optimal dilution to be determined by the researcher)
<b>Size:</b>	100 µl

**Flow Cytometry Image:**



Flow cytometry of Rat peripheral blood lymphocytes with Mouse anti-Rat CD49d:RPE

**Requested From:**

Japan

Laboratory Reagent For In Vitro Research Use Only

Not for resale without prior written consent from LifeSpan BioSciences, Inc.

Created on 9/26/2014

© 2014 LifeSpan BioSciences