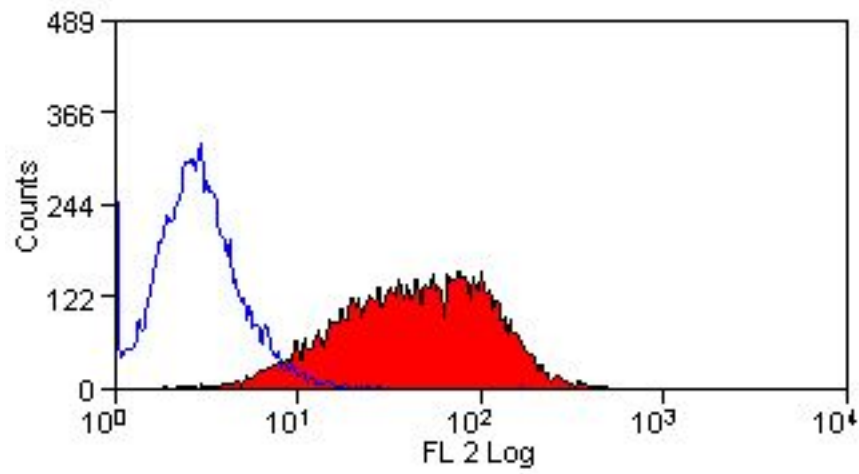


TREM1 / TREM-1 Rat anti-Mouse Monoclonal (RPE) (L5-B8.2A12.3A12) Antibody - LS-C188344 - LSBio	
CatalogID:	LS-C188344
Target:	triggering receptor expressed on myeloid cells 1 (TREM1)
Synonyms:	TREM1 Antibody, CD354 Antibody, CD354 antigen Antibody, Triggering-receptor TREM1 Antibody, TREM-1 Antibody
Host	TREM1 antibody was produced in Rat
Clonality:	Monoclonal
Isotype:	IgG2a
Clone Name:	L5-B8.2A12.3A12
Conjugations:	R. Phycoerythrin (RPE)
Immunogen Species:	TREM1 / TREM-1 antibody was raised against Mouse
Antigen Type:	Fusion protein
Immunogen:	TREM1 / TREM-1 antibody was raised against mouse TREM-1 Fc fusion protein.
Specificity:	Recognizes mouse triggering receptor expressed on myeloid cells 1 (TREM-1), a 30kD member of the immunoglobulin superfamily expressed on neutrophils and a subset of monocytes. TREM-1 is involved in the microbial inflammatory response. It acts in conjunction with the adaptor protein DAP12 to activate neutrophils and monocytes, leading to the secretion of pro-inflammatory mediators and enhancement of the inflammatory response. Microbial infection also induces the release of soluble form of TREM-1 from monocytes, which is reported to act as an inhibitor of TREM-1. TREM-1 mediates the septic shock pathway, and blocking TREM-1 has been reported to reduce inflammation and increase survival in certain models of bacterial infection.
Reactivity:	Mouse
Purification:	Protein G purified
Reconstitution:	Distilled water
Presentation:	PBS, 0.09% sodium azide, 1% BSA
Recommended Storage:	Long term: -20°C; Short term: +4°C; Avoid freeze-thaw cycles. Protect from light.
Uses:	Flow Cytometry (1:1) (Optimal dilution to be determined by the researcher)
Size:	100 tst

Flow Cytometry Image:



Flow cytometry of J774 cells with Rat anti-Mouse TREM-1:RPE

Requested From:

Japan

Laboratory Reagent For In Vitro Research Use Only

Not for resale without prior written consent from LifeSpan BioSciences, Inc.

Created on 9/26/2014

© 2014 LifeSpan BioSciences