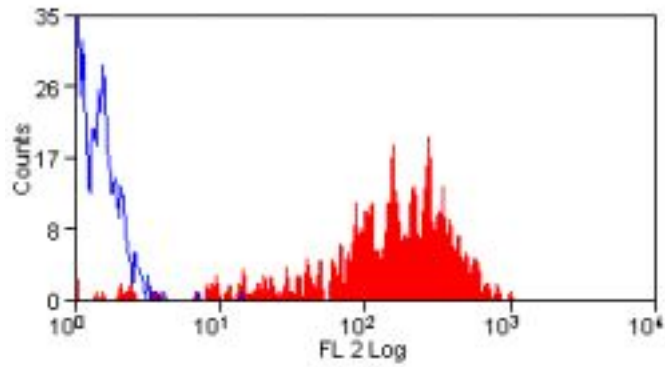


SELP / P-Selectin / CD62P Mouse anti-Human Monoclonal (RPE) (Psel.KO.2.5) Antibody - LS-C188305 - LSBio

CatalogID:	LS-C188305
Target:	selectin P (granule membrane protein 140kDa, antigen CD62) (SELP)
Synonyms:	SELP Antibody, CD62P Antibody, CD62 Antibody, GMP-140 Antibody, GMRP Antibody, Granule membrane protein 140 Antibody, LECAM3 Antibody, P-selectin Antibody, PSEL Antibody, CD62P antigen Antibody, GMP140 Antibody, Granulocyte membrane protein Antibody, GRMP Antibody, PADGEM Antibody
Host	SELP antibody was produced in Mouse
Clonality:	Monoclonal
Isotype:	IgG1
Clone Name:	Psel.KO.2.5
Conjugations:	R. Phycoerythrin (RPE)
Immunogen Species:	SELP / P-Selectin / CD62P antibody was raised against Human
Antigen Type:	Cells
Immunogen:	SELP / P-Selectin / CD62P antibody was raised against cD62P transfected 300.19 cells.
Specificity:	Recognizes the CD62P cell surface antigen, a 140kD glycoprotein also known as P -selectin. CD62P is expressed by activated platelets and endothelial cells, and plays an important role in adhesive processes between leucocytes and endothelial cells.
Reactivity:	Human, Pig, Sheep
Purification:	Protein G purified
Reconstitution:	Distilled water
Presentation:	PBS, 0.09% sodium azide, 1% BSA, 5% sucrose
Recommended Storage:	Store at +4°C. Do not freeze. Protect from light.
Uses:	Flow Cytometry (1:1) (Optimal dilution to be determined by the researcher)
Size:	100 tst

Flow Cytometry Image:



Flow cytometry of thrombin activated human peripheral blood platelets with Mouse anti-Human CD62P:RPE

Requested From:

Japan

Laboratory Reagent For In Vitro Research Use Only

Not for resale without prior written consent from LifeSpan BioSciences, Inc.

Created on 9/26/2014

© 2014 LifeSpan BioSciences