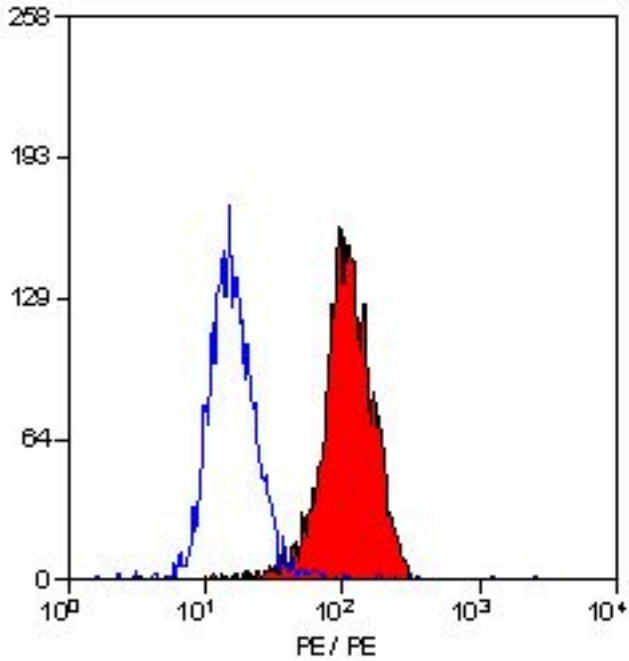


LTBR Rat anti-Mouse Monoclonal (Extracellular Domain) (RPE) (5G11b) Antibody - LS-C188250 - LSBio	
CatalogID:	LS-C188250
Target:	lymphotoxin beta receptor (TNFR superfamily, member 3) (LTBR)
Synonyms:	LTBR Antibody, D12S370 Antibody, CD18 Antibody, LT-BETA-R Antibody, Lymphotoxin B receptor Antibody, Lymphotoxin-beta receptor Antibody, TNFR3 Antibody, TNF-R-III Antibody, TNF-R-III Antibody, TNFCR Antibody, TNFRSF3 Antibody, TNFR-III Antibody, TNFR-RP Antibody, TNFR2-RP Antibody
Family / Subfamily:	TNF Receptor / not assigned-TNF Receptor
Host	LTBR antibody was produced in Rat
Clonality:	Monoclonal
Isotype:	IgG2a
Clone Name:	5G11b
Conjugations:	R. Phycoerythrin (RPE)
Immunogen Species:	LTBR antibody was raised against Mouse
Immunogen:	LTBR antibody was raised against recombinant extracellular domain of LT beta R.
Specificity:	Recognizes murine lymphotoxin-beta receptor (LT beta R), a member of the tumor necrosis factor family. LT beta R is primarily expressed on stromal cells and fibroblasts and at lower levels on myeloid cell lines. Clone 5G11b specifically recognizes surface expressed LT beta R. The clone is reported to be agonistic with respect to NF Kappa B activation, MIP-2 induction and IL-6 release. This product is routinely tested on mouse WEHI cells.
Epitope:	Extracellular Domain
Reactivity:	Mouse
Purification:	Protein G purified
Reconstitution:	Distilled water
Presentation:	PBS, 0.09% sodium azide, 1% BSA, 5% sucrose
Recommended Storage:	Store at +4°C. Do not freeze. Protect from light.
Uses:	Flow Cytometry (1:1) (Optimal dilution to be determined by the researcher)
Size:	100 tst

Flow Cytometry Image:



Flow cytometry of mouse WEH1 cells with Rat anti-Mouse lymphotoxin receptor beta

Requested From:

Japan

Laboratory Reagent For In Vitro Research Use Only

Not for resale without prior written consent from LifeSpan BioSciences, Inc.

Created on 9/26/2014

© 2014 LifeSpan BioSciences