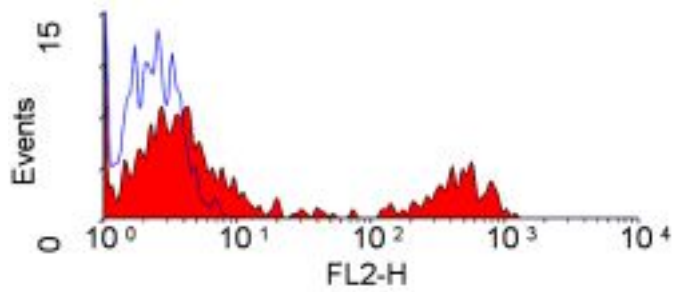


**CR2 / CD21 Mouse anti-Canine Monoclonal (RPE) (CA2.1D6) Antibody - LS-C188177 - LSBio**

<b>CatalogID:</b>	LS-C188177
<b>Target:</b>	complement component (3d/Epstein Barr virus) receptor 2 (CR2)
<b>Synonyms:</b>	CR2 Antibody, C3DR Antibody, CD21 antigen Antibody, CVID7 Antibody, Complement receptors type 2 Antibody, CD21 Antibody, Complement C3d receptor Antibody, EBV receptor Antibody, SLEB9 Antibody, Complement receptor type 2 Antibody, CR Antibody, Epstein-Barr virus receptor Antibody
<b>Host</b>	CR2 antibody was produced in Mouse
<b>Clonality:</b>	Monoclonal
<b>Isotype:</b>	IgG1
<b>Clone Name:</b>	CA2.1D6
<b>Conjugations:</b>	R. Phycoerythrin (RPE)
<b>Immunogen Species:</b>	CR2 / CD21 antibody was raised against Canine
<b>Reactivity:</b>	Canine, Cat, Dog, Horse
<b>Purification:</b>	Protein G purified
<b>Reconstitution:</b>	Distilled water
<b>Presentation:</b>	PBS, 0.09% sodium azide, 1% BSA
<b>Recommended Storage:</b>	Store at +4°C. Do not freeze. Protect from light.
<b>Uses:</b>	Flow Cytometry (1:1) (Optimal dilution to be determined by the researcher)
<b>Size:</b>	100 tst

**Flow Cytometry Image:**



Flow cytometry of canine peripheral blood lymphocytes with Mouse anti-Canine CD21:RPE

**Requested From:**

Japan

Laboratory Reagent For In Vitro Research Use Only

Not for resale without prior written consent from LifeSpan BioSciences, Inc.

Created on 9/26/2014

© 2014 LifeSpan BioSciences