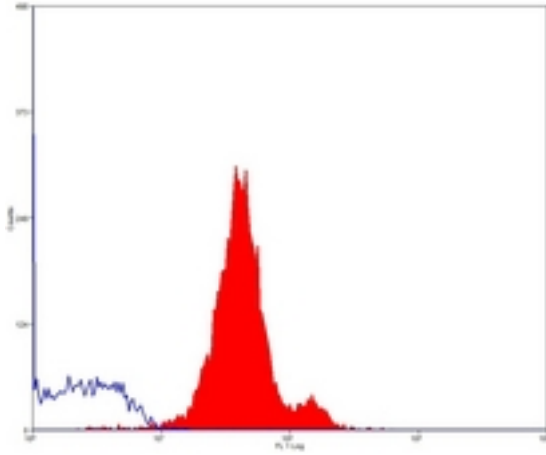


CD45 Mouse anti-Pig Monoclonal (FITC) (K252-1E4) Antibody - LS-C188101 - LSBio

CatalogID:	LS-C188101
Target:	protein tyrosine phosphatase, receptor type, C (PTPRC)
Synonyms:	PTPRC Antibody, B220 Antibody, CD45R Antibody, CD45 Antibody, gp180 Antibody, Leukocyte common antigen Antibody, L-CA Antibody, Leucocyte common antigen Antibody, LY5 Antibody, T200 Antibody, T200 glycoprotein Antibody, T200 leukocyte common antigen Antibody, CD45 antigen Antibody, LCA Antibody
Family / Subfamily:	Protein Phosphatase / R1/R6
Host	PTPRC antibody was produced in Mouse
Clonality:	Monoclonal
Isotype:	IgG1
Clone Name:	K252-1E4
Conjugations:	Fluorescein (FITC)
Immunogen Species:	CD45 antibody was raised against Pig
Antigen Type:	Cells
Immunogen:	CD45 antibody was raised against porcine Peripheral Blood lymphocytes.
Specificity:	Recognizes porcine CD45, expressed by all leucocytes.
Reactivity:	Pig
Purification:	Protein G purified
Presentation:	PBS, 0.09% sodium azide, 1% BSA
Recommended Storage:	Long term: -20°C; Short term: +4°C; Avoid freeze-thaw cycles. Protect from light.
Uses:	Flow Cytometry (1:1) (Optimal dilution to be determined by the researcher)
Size:	100 tst
Concentration:	0.1 mg/ml

Flow Cytometry Image:



Flow cytometry of pig peripheral blood lymphocytes with Mouse anti-Pig CD45:FITC

Requested From:

Japan

Laboratory Reagent For In Vitro Research Use Only

Not for resale without prior written consent from LifeSpan BioSciences, Inc.

Created on 9/26/2014

© 2014 LifeSpan BioSciences