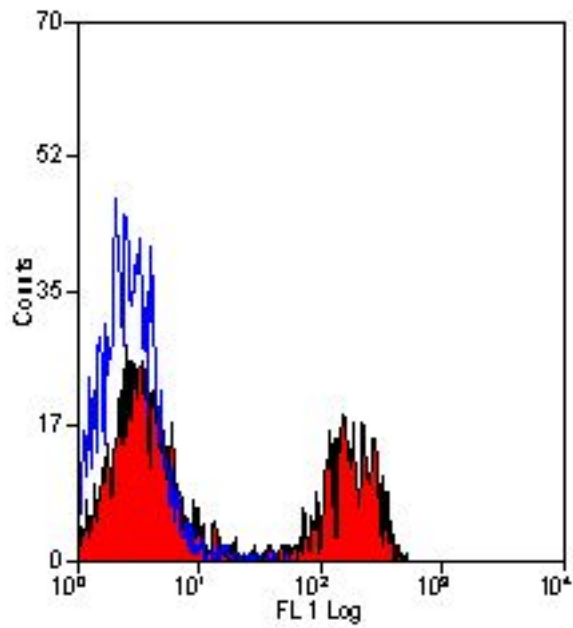


CD8A / CD8 Alpha Rat anti-Canine Monoclonal (RPE) (YCATE55.9) Antibody - LS-C188088 - LSBio

CatalogID:	LS-C188088
Target:	CD8a molecule
Synonyms:	CD8A Antibody, CD8a molecule Antibody, CD8a antigen Antibody, OKT8 T-cell antigen Antibody, Leu2 T-lymphocyte antigen Antibody, T8 T-cell antigen Antibody, T cell co-receptor Antibody, p32 Antibody, CD8 Antibody, Leu2 Antibody, T-cell antigen Leu2 Antibody
Host	CD8A antibody was produced in Rat
Clonality:	Monoclonal
Isotype:	IgG1
Clone Name:	YCATE55.9
Conjugations:	R. Phycoerythrin (RPE)
Immunogen Species:	CD8A / CD8 Alpha antibody was raised against Canine
Immunogen:	CD8A / CD8 Alpha antibody was raised against canine CD8 alpha chimeric human IgG1 Fc fusion protein.
Specificity:	Recognizes the canine CD8 cell surface antigen, expressed by cytotoxic/suppressor T cells. The antibody binds to CD8 alpha.
Reactivity:	Canine, Dog
Purification:	Protein G purified
Reconstitution:	Distilled water
Presentation:	PBS, 0.09% sodium azide, 1% BSA, 5% sucrose
Recommended Storage:	Store at +4°C. Do not freeze. Protect from light.
Uses:	Flow Cytometry (1:1) (Optimal dilution to be determined by the researcher)
Size:	100 tst

Flow Cytometry Image:



Flow cytometry of canine peripheral blood lymphocytes with Rat anti-Canine CD8:RPE

Requested From:

Japan

Laboratory Reagent For In Vitro Research Use Only

Not for resale without prior written consent from LifeSpan BioSciences, Inc.

Created on 9/26/2014

© 2014 LifeSpan BioSciences