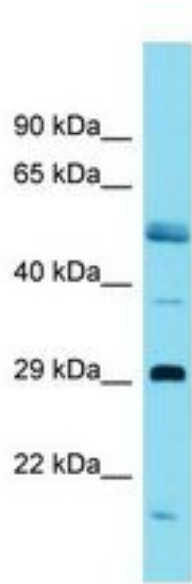


**OVOL1 Rabbit anti-Rat Polyclonal (C-Terminus) Antibody - LS-C187143 - LSBio**

<b>CatalogID:</b>	LS-C187143
<b>Target:</b>	ovo-like zinc finger 1 (OVOL1)
<b>Synonyms:</b>	OVOL1 Antibody, HOVO1 Antibody, Ovo-like 1(Drosophila) Antibody, Ovo homolog-like 1 Antibody
<b>Host</b>	OVOL1 antibody was produced in Rabbit
<b>Clonality:</b>	Polyclonal
<b>Immunogen Species:</b>	OVOL1 antibody was raised against Rat
<b>Immunogen:</b>	OVOL1 antibody was raised against synthetic peptide from C-Terminus of rat Ovol1 (D4A445, NP_001101042). Percent identity by BLAST analysis: Human, Chimpanzee, Gorilla, Orangutan, Gibbon, Baboon, Monkey, Galago, Marmoset, Mouse, Rat, Goat, Hamster, Elephant, Dog, Bovine, Bat, Rabbit, Horse, Pig, Opossum, Guinea pig, Platypus (100%); Panda (92%).
<b>Specificity:</b>	Rat OVOL1
<b>Epitope:</b>	C-Terminus
<b>Reactivity:</b>	Rat, Human, Chimpanzee, Orangutan, Gibbon, Monkey, Mouse, Bat, Bovine, Dog, Goat, Guinea pig, Hamster, Horse, Pig, Rabbit
<b>Purification:</b>	Immunoaffinity purified
<b>Reconstitution:</b>	Distilled water. Possible additional volumes for resuspension: 50 µl
<b>Presentation:</b>	Lyophilized from PBS
<b>Recommended Storage:</b>	Long term: -20°C, the use of 50% glycerol is recommended if storing aliquots in -20°C for long term use (up to 1 year); Short term (less than one week): +4°C. Avoid repeat freeze-thaw cycles.
<b>Uses:</b>	Western blot (Optimal dilution to be determined by the researcher)
<b>Size:</b>	50 µg
<b>Concentration:</b>	1 mg/ml (after resuspension)

**Western Blot Image:**



Western blot of Rat Pancreas. Ovol1 antibody dilution 1.0 ug/ml.

**Requested From:**

Japan

Laboratory Reagent For In Vitro Research Use Only

Not for resale without prior written consent from LifeSpan BioSciences, Inc.

Created on 9/26/2014

© 2014 LifeSpan BioSciences