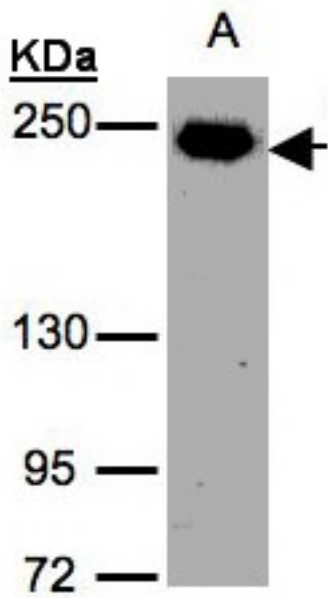


TJP1 / ZO-1 Rabbit anti-Human Polyclonal (aa1574-1748) Antibody - LS-C186003 - LSBio	
<b>CatalogID:</b>	LS-C186003
<b>Target:</b>	tight junction protein 1 (TJP1)
<b>Synonyms:</b>	TJP1 Antibody, ZO-1 Antibody, Zona occludens protein 1 Antibody, Zona occludens 1 Antibody, Zonula occludens protein 1 Antibody, Tight junction protein 1 Antibody, ZO1 Antibody, Tight junction protein ZO-1 Antibody, Zonula occludens 1 protein Antibody
<b>Family / Subfamily:</b>	Occludin / Not assigned-Occludin
<b>Host</b>	TJP1 antibody was produced in Rabbit
<b>Clonality:</b>	Polyclonal
<b>Isotype:</b>	IgG
<b>Immunogen Species:</b>	TJP1 / ZO-1 antibody was raised against Human
<b>Antigen Type:</b>	Recombinant protein
<b>Immunogen:</b>	TJP1 / ZO-1 antibody was raised against recombinant fragment corresponding to a region within amino acids 1574 and 1748 of ZO-1 (SwissProt Q07157). Percent identity by BLAST analysis: Human (100%); Mouse, Rat (99%).
<b>Specificity:</b>	Human ZO-1
<b>Epitope:</b>	aa1574-1748
<b>Reactivity:</b>	Human
<b>Predicted Reactivity:</b>	Mouse, Rat
<b>Purification:</b>	Immunoaffinity purified
<b>Presentation:</b>	0.1 M Tris-glycine, pH 7.0, 10% glycerol, 0.01% Thimerosal
<b>Recommended Storage:</b>	Keep as concentrated solution. Aliquot and store at -20°C or below. Avoid multiple freeze-thaw cycles.
<b>Uses:</b>	Western blot (1:500 - 1:3000) (Optimal dilution to be determined by the researcher)
<b>Size:</b>	100 µl
<b>Concentration:</b>	1 mg/ml

**Western Blot Image:**



Sample (30 ug whole cell lysate). A: H1299. 5% SDS PAGE. ZO-1 antibody diluted at 1:1000

**Requested From:**

Japan

Laboratory Reagent For In Vitro Research Use Only

Not for resale without prior written consent from LifeSpan BioSciences, Inc.

Created on 9/26/2014

© 2014 LifeSpan BioSciences