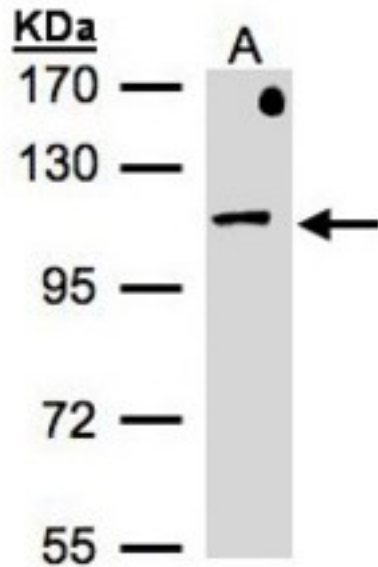


AP2B1 Rabbit anti-Human Polyclonal (aa384-609) Antibody - LS-C185428 - LSBio

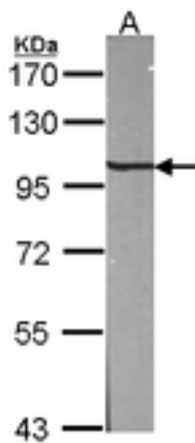
CatalogID:	LS-C185428
Target:	adaptor-related protein complex 2, beta 1 subunit (AP2B1)
Synonyms:	AP2B1 Antibody, Adaptin, beta 2 (beta) Antibody, ADTB2 Antibody, AP-2 complex subunit beta Antibody, AP2-BETA Antibody, Beta-adaptin Antibody, CLAPB1 Antibody, AP105B Antibody, Beta-2-adaptin Antibody
Host	AP2B1 antibody was produced in Rabbit
Clonality:	Polyclonal
Isotype:	IgG
Immunogen Species:	AP2B1 antibody was raised against Human
Antigen Type:	Recombinant protein
Immunogen:	AP2B1 antibody was raised against recombinant fragment corresponding to a region within amino acids 384 and 609 of beta-Adaptin (SwissProt Q10567). Percent identity by BLAST analysis: Human, Bovine (100%); Xenopus, Zebrafish (99%); Rat (98%).
Specificity:	Human AP2B1
Epitope:	aa384-609
Reactivity:	Human, Bovine
Predicted Reactivity:	Rat, Xenopus, Zebrafish
Purification:	Immunoaffinity purified
Presentation:	0.1 M Tris-glycine, pH 7.0, 10% glycerol, 0.01% Thimerosal
Recommended Storage:	Keep as concentrated solution. Aliquot and store at -20°C or below. Avoid multiple freeze-thaw cycles.
Uses:	Western blot (1:500 - 1:3000) (Optimal dilution to be determined by the researcher)
Size:	100 µl
Concentration:	0.55 mg/ml

Western Blot Image:



Sample (30 ug of whole cell lysate). A: MOLT4. 7.5% SDS PAGE. AP2B1 antibody diluted at 1:500

Western Blot Image:



Sample (30 ug of whole cell lysate). A: NIH-3T3. 7.5% SDS PAGE. AP2B1 antibody diluted at 1:1000.

Requested From:

Japan

Laboratory Reagent For In Vitro Research Use Only

Not for resale without prior written consent from LifeSpan BioSciences, Inc.

Created on 9/26/2014

© 2014 LifeSpan BioSciences