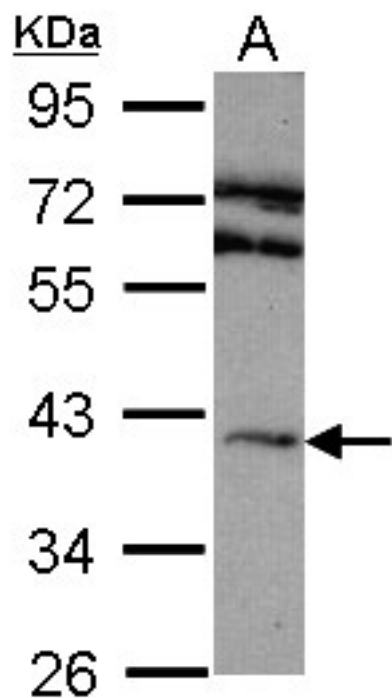


**ADORA2A/Adenosine A2A Receptor Rabbit anti-Human Polyclonal (aa255-345) Antibody - LS-C185363 - LSBio**

<b>CatalogID:</b>	LS-C185363
<b>Target:</b>	adenosine A2a receptor (ADORA2A)
<b>Synonyms:</b>	ADORA2A Antibody, Adenosine receptor A2a Antibody, ADORA2 Antibody, A2a receptor Antibody, Adenosine A2a receptor Antibody, Adenosine A2 receptor Antibody, Adenosine receptor subtype A2a Antibody, HA2aR Antibody, RDC8 Antibody
<b>Family / Subfamily:</b>	GPCR / Adenosine
<b>Host</b>	ADORA2A antibody was produced in Rabbit
<b>Clonality:</b>	Polyclonal
<b>Isotype:</b>	IgG
<b>Immunogen Species:</b>	ADORA2A/Adenosine A2A Receptor antibody was raised against Human
<b>Antigen Type:</b>	Synthetic peptide
<b>Immunogen:</b>	ADORA2A/Adenosine A2A Receptor antibody was raised against synthetic peptide corresponding to a region within amino acids 255 and 345 of Adenosine A2a Receptor.
<b>Specificity:</b>	Human A2a Receptor / ADORA2A
<b>Epitope:</b>	aa255-345
<b>Reactivity:</b>	Human
<b>Purification:</b>	Immunoaffinity purified
<b>Presentation:</b>	PBS, pH 7.0, 10% glycerol, 0.01% Thimerosal
<b>Recommended Storage:</b>	Keep as concentrated solution. Aliquot and store at -20°C or below. Avoid multiple freeze-thaw cycles.
<b>Uses:</b>	Western blot (1:100 - 1:1000) (Optimal dilution to be determined by the researcher)
<b>Size:</b>	100 µl
<b>Concentration:</b>	0.5 mg/ml

Western Blot Image:



Sample (30 ug of whole cell lysate). A:293T. 10% SDS PAGE. A2a Receptor / ADORA2A antibody diluted at 1:1000.

Requested From:

Japan

Laboratory Reagent For In Vitro Research Use Only

Not for resale without prior written consent from LifeSpan BioSciences, Inc.

Created on 9/26/2014

© 2014 LifeSpan BioSciences