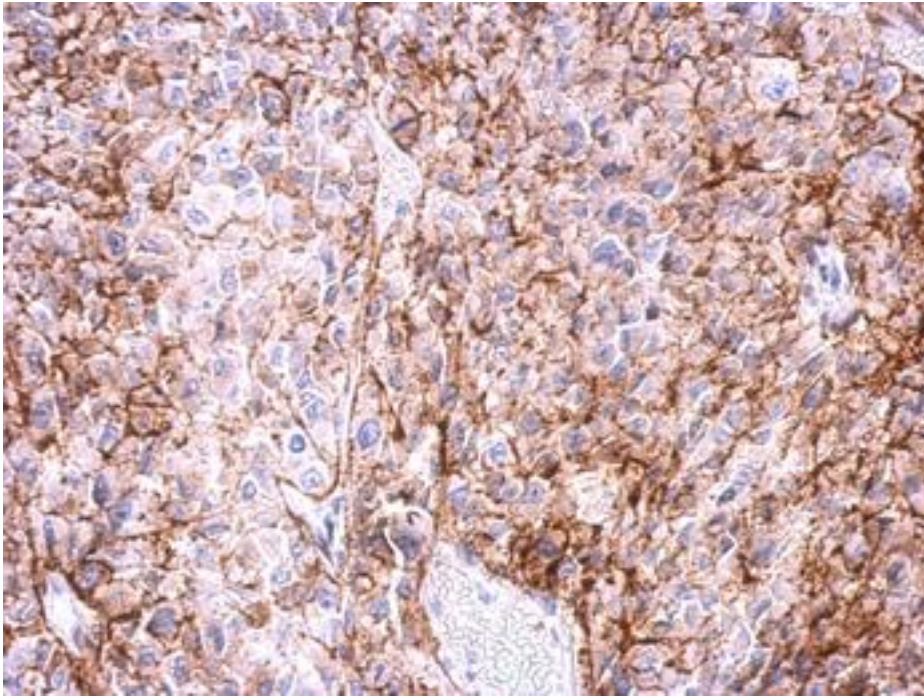


ADORA2A/Adenosine A2A Receptor Rabbit anti-Human Polyclonal (aa338-412) Antibody - LS-C185331 - LSBio

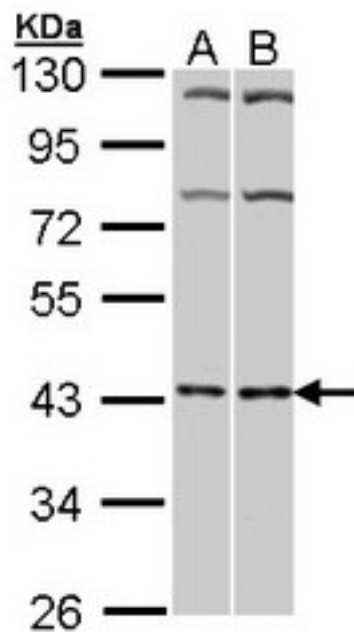
CatalogID:	LS-C185331
Target:	adenosine A2a receptor (ADORA2A)
Synonyms:	ADORA2A Antibody, Adenosine receptor A2a Antibody, ADORA2 Antibody, A2a receptor Antibody, Adenosine A2a receptor Antibody, Adenosine A2 receptor Antibody, Adenosine receptor subtype A2a Antibody, HA2aR Antibody, RDC8 Antibody
Family / Subfamily:	GPCR / Adenosine
Host	ADORA2A antibody was produced in Rabbit
Clonality:	Polyclonal
Isotype:	IgG
Immunogen Species:	ADORA2A/Adenosine A2A Receptor antibody was raised against Human
Antigen Type:	Synthetic peptide
Immunogen:	ADORA2A/Adenosine A2A Receptor antibody was raised against synthetic peptide corresponding to a region within amino acids 338 and 412 of Adenosine A2a Receptor (SwissProt P29274).
Specificity:	Human A2a Receptor / ADORA2A
Epitope:	aa338-412
Reactivity:	Human
Purification:	Immunoaffinity purified
Presentation:	PBS, pH 7.0, 20% glycerol, 0.01% Thimerosal
Recommended Storage:	Keep as concentrated solution. Aliquot and store at -20°C or below. Avoid multiple freeze-thaw cycles.
Uses:	IHC - Paraffin (1:100 - 1:1000), Western blot (1:500 - 1:3000) (Optimal dilution to be determined by the researcher)
Size:	100 µl
Concentration:	1 mg/ml

Immunohistochemistry Image:



IHC of paraffin-embedded Ca922 xenograft using Adenosine A2a Receptor antibody at 1:500 dilution.

Western Blot Image:



Sample (30 ug of whole cell lysate). A: HeLa, B: Molt-4 . 10% SDS PAGE. A2a Receptor / ADORA2A antibody diluted at 1:1000.

Requested From:

Japan

Laboratory Reagent For In Vitro Research Use Only

Not for resale without prior written consent from LifeSpan BioSciences, Inc.

Created on 9/26/2014

© 2014 LifeSpan BioSciences