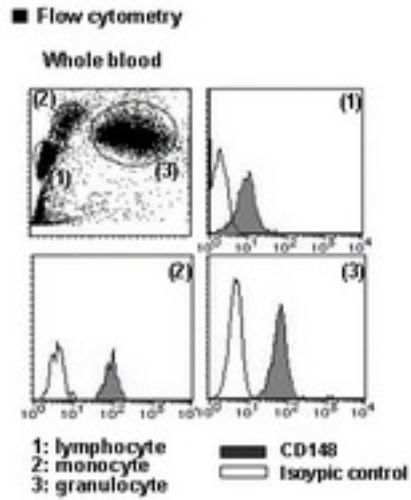


PTPRJ / CD148 Mouse anti-Human Monoclonal (PE) (255) Antibody - LS-C179814 - LSBio	
<b>CatalogID:</b>	LS-C179814
<b>Target:</b>	protein tyrosine phosphatase, receptor type, J (PTPRJ)
<b>Synonyms:</b>	PTPRJ Antibody, CD148 Antibody, CD148 antigen Antibody, DEP-1 Antibody, HPTPeta Antibody, HPTP eta Antibody, Ptp-eta Antibody, R-PTP-J Antibody, R-PTP-ETA Antibody, Density-enhanced phosphatase 1 Antibody, DEP1 Antibody, SCC1 Antibody
<b>Family / Subfamily:</b>	Protein Phosphatase / R3
<b>Host</b>	PTPRJ antibody was produced in Mouse
<b>Clonality:</b>	Monoclonal
<b>Isotype:</b>	IgG2a
<b>Clone Name:</b>	255
<b>Conjugations:</b>	Phycoerythrin (PE)
<b>Immunogen Species:</b>	PTPRJ / CD148 antibody was raised against Human
<b>Antigen Type:</b>	Cells
<b>Immunogen:</b>	PTPRJ / CD148 antibody was raised against human peripheral blood mononuclear cells.
<b>Specificity:</b>	Human DEP-1 / CD148
<b>Reactivity:</b>	Human
<b>Purification:</b>	Protein A purified
<b>Presentation:</b>	PBS, 1% BSA, 0.09% sodium azide
<b>Recommended Storage:</b>	Store at 4°C.
<b>Usage Summary:</b>	Flo: 20 ul/test;
<b>Uses:</b>	Flow Cytometry (Optimal dilution to be determined by the researcher)
<b>Size:</b>	50 tst

**Flow Cytometry Image:**



**Requested From:**

Japan

Laboratory Reagent For In Vitro Research Use Only

Not for resale without prior written consent from LifeSpan BioSciences, Inc.

Created on 9/26/2014

© 2014 LifeSpan BioSciences