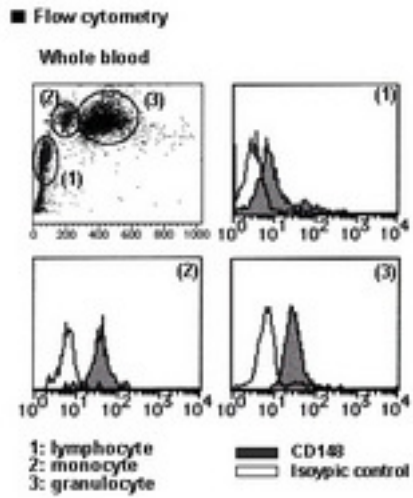


PTPRJ / CD148 Mouse anti-Human Monoclonal (FITC) (255) Antibody - LS-C179813 - LSBio	
CatalogID:	LS-C179813
Target:	protein tyrosine phosphatase, receptor type, J (PTPRJ)
Synonyms:	PTPRJ Antibody, CD148 Antibody, CD148 antigen Antibody, DEP-1 Antibody, HPTPeta Antibody, HPTP eta Antibody, Ptp-eta Antibody, R-PTP-J Antibody, R-PTP-ETA Antibody, Density-enhanced phosphatase 1 Antibody, DEP1 Antibody, SCC1 Antibody
Family / Subfamily:	Protein Phosphatase / R3
Host	PTPRJ antibody was produced in Mouse
Clonality:	Monoclonal
Isotype:	IgG2a
Clone Name:	255
Conjugations:	Fluorescein (FITC)
Immunogen Species:	PTPRJ / CD148 antibody was raised against Human
Antigen Type:	Cells
Immunogen:	PTPRJ / CD148 antibody was raised against human peripheral blood mononuclear cells.
Specificity:	Human DEP-1 / CD148
Reactivity:	Human
Purification:	Protein A purified
Presentation:	PBS, 1% BSA, 0.09% sodium azide
Recommended Storage:	Store at 4°C.
Uses:	Flow Cytometry (50 µg/ml) (Optimal dilution to be determined by the researcher)
Size:	50 µg
Concentration:	0.5 mg/ml

Flow Cytometry Image:



Requested From:

Japan

Laboratory Reagent For In Vitro Research Use Only

Not for resale without prior written consent from LifeSpan BioSciences, Inc.

Created on 9/26/2014

© 2014 LifeSpan BioSciences