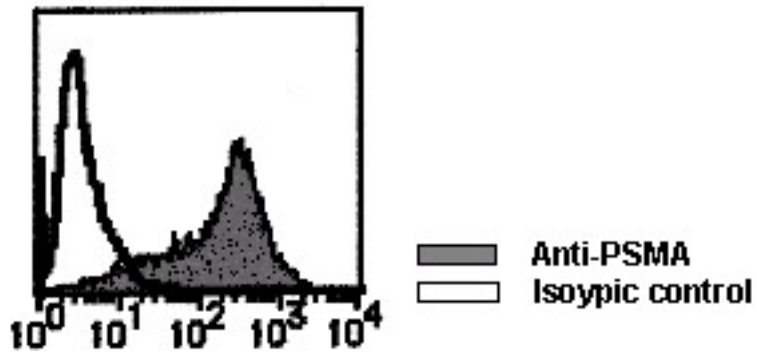


| FOLH1 / PSMA Mouse anti-Human Monoclonal (PE) (107-1A4) Antibody - LS-C179666 - LSBio | |
|---|---|
| CatalogID: | LS-C179666 |
| Target: | folate hydrolase (prostate-specific membrane antigen) 1 (FOLH1) |
| Synonyms: | FOLH1 Antibody, Folate hydrolase 1 Antibody, GCPII Antibody, Glutamate carboxypeptidase II Antibody, Folate hydrolase Antibody, GCP2 Antibody, NAALAD1 Antibody, NAALAdase Antibody, NAALADase I Antibody, PSM Antibody, FGCP Antibody, FOLH Antibody, Glutamate carboxylase II Antibody, Glutamate carboxypeptidase 2 Antibody, MGCP Antibody, PSMA Antibody |
| Host | FOLH1 antibody was produced in Mouse |
| Clonality: | Monoclonal |
| Isotype: | IgG1 |
| Clone Name: | 107-1A4 |
| Conjugations: | Phycoerythrin (PE) |
| Immunogen Species: | FOLH1 / PSMA antibody was raised against Human |
| Antigen Type: | Cell lysate |
| Immunogen: | FOLH1 / PSMA antibody was raised against INCaP cell homogenate. |
| Specificity: | Human PSMA |
| Reactivity: | Human |
| Purification: | Protein A purified |
| Presentation: | PBS, 1% BSA, 0.09% sodium azide |
| Recommended Storage: | Store at 4°C. |
| Usage Summary: | Flo: 20 ul/test; |
| Uses: | Flow Cytometry (Optimal dilution to be determined by the researcher) |
| Size: | 50 tst |

Flow Cytometry Image:

■ Flow cytometry

LNCaP cells



Requested From:

Japan

Laboratory Reagent For In Vitro Research Use Only

Not for resale without prior written consent from LifeSpan BioSciences, Inc.

Created on 9/26/2014

© 2014 LifeSpan BioSciences