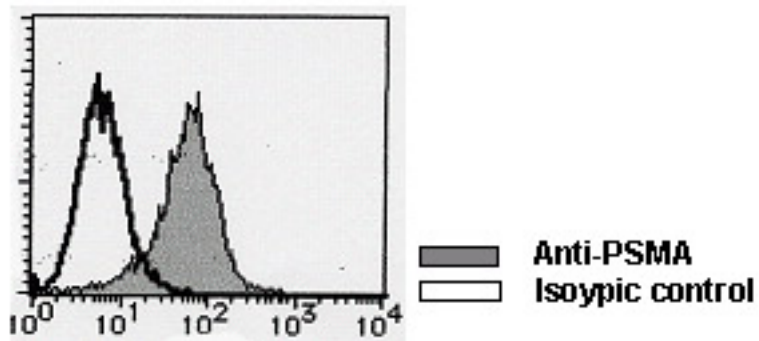


FOLH1 / PSMA Mouse anti-Human Monoclonal (FITC) (107-1A4) Antibody - LS-C179665 - LSBio	
CatalogID:	LS-C179665
Target:	folate hydrolase (prostate-specific membrane antigen) 1 (FOLH1)
Synonyms:	FOLH1 Antibody, Folate hydrolase 1 Antibody, GCPII Antibody, Glutamate carboxypeptidase II Antibody, Folate hydrolase Antibody, GCP2 Antibody, NAALAD1 Antibody, NAALAdase Antibody, NAALADase I Antibody, PSM Antibody, FGCP Antibody, FOLH Antibody, Glutamate carboxylase II Antibody, Glutamate carboxypeptidase 2 Antibody, MGCP Antibody, PSMA Antibody
Host	FOLH1 antibody was produced in Mouse
Clonality:	Monoclonal
Isotype:	IgG1
Clone Name:	107-1A4
Conjugations:	Fluorescein (FITC)
Immunogen Species:	FOLH1 / PSMA antibody was raised against Human
Antigen Type:	Cell lysate
Immunogen:	FOLH1 / PSMA antibody was raised against INCaP cell homogenate.
Specificity:	Human PSMA
Reactivity:	Human
Purification:	Protein A purified
Presentation:	PBS, 1% BSA, 0.09% sodium azide
Recommended Storage:	Store at 4°C.
Uses:	Flow Cytometry (10 - 20 µg/ml) (Optimal dilution to be determined by the researcher)
Size:	50 µg
Concentration:	0.5 mg/ml

Flow Cytometry Image:

■ Flow cytometry

LNCaP cells



Requested From:

Japan

Laboratory Reagent For In Vitro Research Use Only

Not for resale without prior written consent from LifeSpan BioSciences, Inc.

Created on 9/26/2014

© 2014 LifeSpan BioSciences