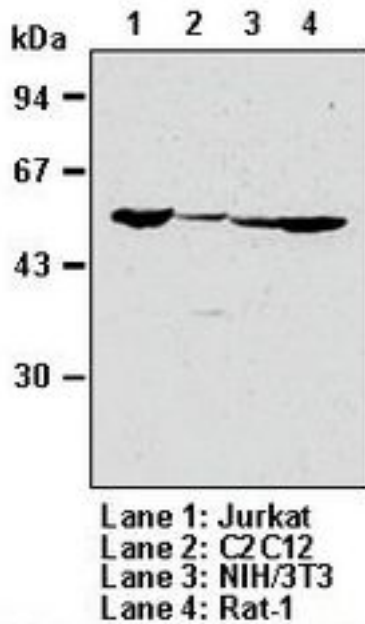


CDH1 / E Cadherin Mouse anti-Human Monoclonal (DCS-266) Antibody - LS-C179606 - LSBio	
CatalogID:	LS-C179606
Target:	cadherin 1, type 1, E-cadherin (epithelial) (CDH1)
Synonyms:	CDH1 Antibody, CD324 Antibody, CDHE Antibody, Cell-CAM 120/80 Antibody, E Cadherin Antibody, E-Cadherin Antibody, ECAD Antibody, Epithelial cadherin Antibody, Arc-1 Antibody, UVO Antibody, Cadherin-1 Antibody, CAM 120/80 Antibody, CD324 antigen Antibody, LCAM Antibody, Uvomorulin Antibody
Family / Subfamily:	Cadherin / not assigned-Cadherin
Host	CDH1 antibody was produced in Mouse
Clonality:	Monoclonal
Isotype:	IgG
Clone Name:	DCS-266
Immunogen Species:	CDH1 / E Cadherin antibody was raised against Human
Antigen Type:	Recombinant protein
Immunogen:	CDH1 / E Cadherin antibody was raised against recombinant Human Cdh1.
Specificity:	Human E Cadherin
Reactivity:	Human, Mouse, Rat
Purification:	Protein A purified
Presentation:	PBS, pH 7.2, 50% glycerol
Recommended Storage:	Store at -20°C.
Usage Summary:	IP: 1-2 ug/200-500 ul of cell extract from 5x10E6 cells;
Uses:	Western blot (1 - 5 µg/ml), Immunoprecipitation (Optimal dilution to be determined by the researcher)
Size:	100 µg
Concentration:	1 mg/ml

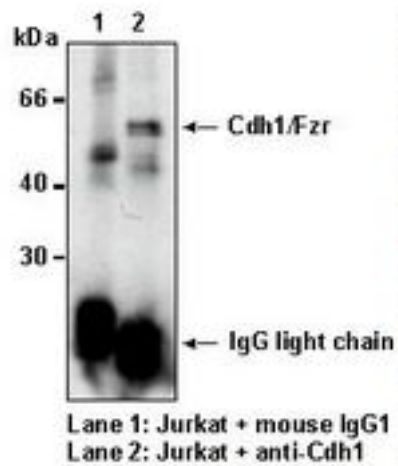
Western Blot Image:

■ Western blotting



Immunoprecipitation Image:

■ Immunoprecipitation



Requested From:

Japan

Laboratory Reagent For In Vitro Research Use Only

Not for resale without prior written consent from LifeSpan BioSciences, Inc.

Created on 9/26/2014

© 2014 LifeSpan BioSciences