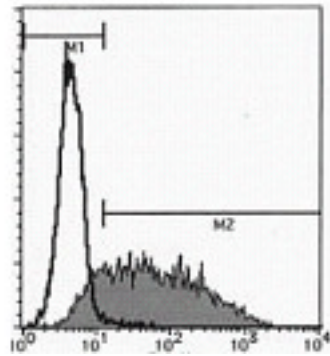


CSF2RA / CD116 Mouse anti-Human Monoclonal (FITC) (4H1) Antibody - LS-C179581 - LSBio	
<b>CatalogID:</b>	LS-C179581
<b>Target:</b>	colony stimulating factor 2 receptor, alpha, low-affinity (granulocyte-macrophage) (CSF2RA)
<b>Synonyms:</b>	CSF2RA Antibody, CD116 Antibody, CD116 antigen Antibody, CDw116 Antibody, CSF2R Antibody, CSF2RX Antibody, CSF2RY Antibody, CSF2RAY Antibody, GM-CSF-R-alpha Antibody, GM-CSF receptor alpha subunit Antibody, GMCSFR Antibody, GMR Antibody, GMR-alpha Antibody, SMDP4 Antibody, CSF2RAX Antibody, GMCSFR-alpha Antibody
<b>Host</b>	CSF2RA antibody was produced in Mouse
<b>Clonality:</b>	Monoclonal
<b>Isotype:</b>	IgG1,k
<b>Clone Name:</b>	4H1
<b>Conjugations:</b>	Fluorescein (FITC)
<b>Immunogen Species:</b>	CSF2RA / CD116 antibody was raised against Human
<b>Antigen Type:</b>	Cells
<b>Immunogen:</b>	CSF2RA / CD116 antibody was raised against cOS cells overexpressing GM-CSF receptor -chain.
<b>Specificity:</b>	Human CSF2RA / CD116
<b>Reactivity:</b>	Human
<b>Purification:</b>	Protein A purified
<b>Presentation:</b>	PBS, 1% BSA, 0.09% sodium azide
<b>Recommended Storage:</b>	Store at 4°C.
<b>Uses:</b>	Flow Cytometry (10 - 20 µg/ml) (Optimal dilution to be determined by the researcher)
<b>Size:</b>	1,000 µl
<b>Concentration:</b>	50 µg/ml

Flow Cytometry Image:

■ Flow cytometry

transfectant



■ Anti-CD116  
□ Isotypic control

Requested From:

Japan

Laboratory Reagent For In Vitro Research Use Only

Not for resale without prior written consent from LifeSpan BioSciences, Inc.

Created on 9/26/2014

© 2014 LifeSpan BioSciences