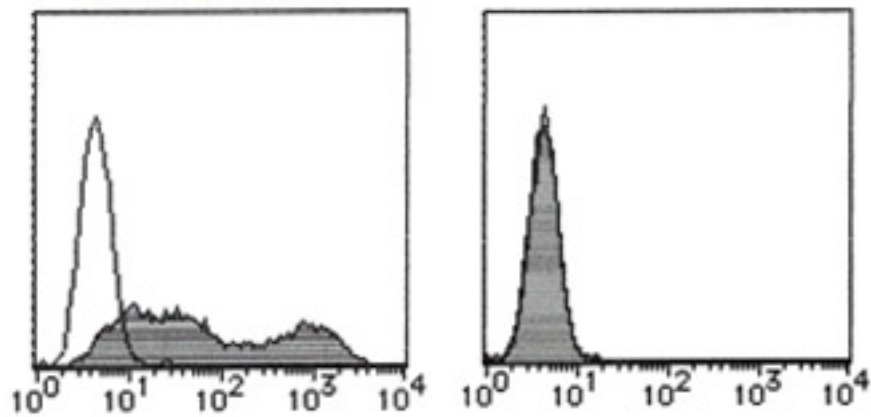


**PDPN / Podoplanin Rat anti-Mouse Monoclonal (FITC) (8F11) Antibody - LS-C179447 - LSBio**

<b>CatalogID:</b>	LS-C179447
<b>Target:</b>	podoplanin (PDPN)
<b>Synonyms:</b>	PDPN Antibody, AGGRUS Antibody, HT1alpha-1 Antibody, Glycoprotein 36 Antibody, Glycoprotein, 36-KD Antibody, gp36 Antibody, gp38 Antibody, OTS8 Antibody, PA2.26 Antibody, PA2.26 antigen Antibody, Podoplanin Antibody, T1A Antibody, gp40 Antibody, HT1A-1 Antibody, HT1alpha-2 Antibody, T1-alpha Antibody, T1A-2 Antibody
<b>Host</b>	PDPN antibody was produced in Rat
<b>Clonality:</b>	Monoclonal
<b>Isotype:</b>	IgG2a
<b>Clone Name:</b>	8F11
<b>Conjugations:</b>	Fluorescein (FITC)
<b>Immunogen Species:</b>	PDPN / Podoplanin antibody was raised against Mouse
<b>Antigen Type:</b>	Membrane fraction
<b>Immunogen:</b>	PDPN / Podoplanin antibody was raised against nL-17 cell membrane fraction.
<b>Specificity:</b>	Mouse Podoplanin
<b>Reactivity:</b>	Mouse
<b>Purification:</b>	Protein G purified
<b>Presentation:</b>	PBS, 1% BSA, 0.09% sodium azide
<b>Recommended Storage:</b>	Store at 4°C.
<b>Uses:</b>	Flow Cytometry (10 µg/ml) (Optimal dilution to be determined by the researcher)
<b>Size:</b>	50 tst
<b>Concentration:</b>	0.5 mg/ml

Flow Cytometry Image:

■ Flow cytometry



Cell

Left: mouse Aggrus (Podoplanin) /CHO

Right: parental cell (CHO)

Antibody

Closed: D190-4

Open: isotype control (M081-4)

Requested From:

Japan

Laboratory Reagent For In Vitro Research Use Only

Not for resale without prior written consent from LifeSpan BioSciences, Inc.

Created on 9/26/2014

© 2014 LifeSpan BioSciences