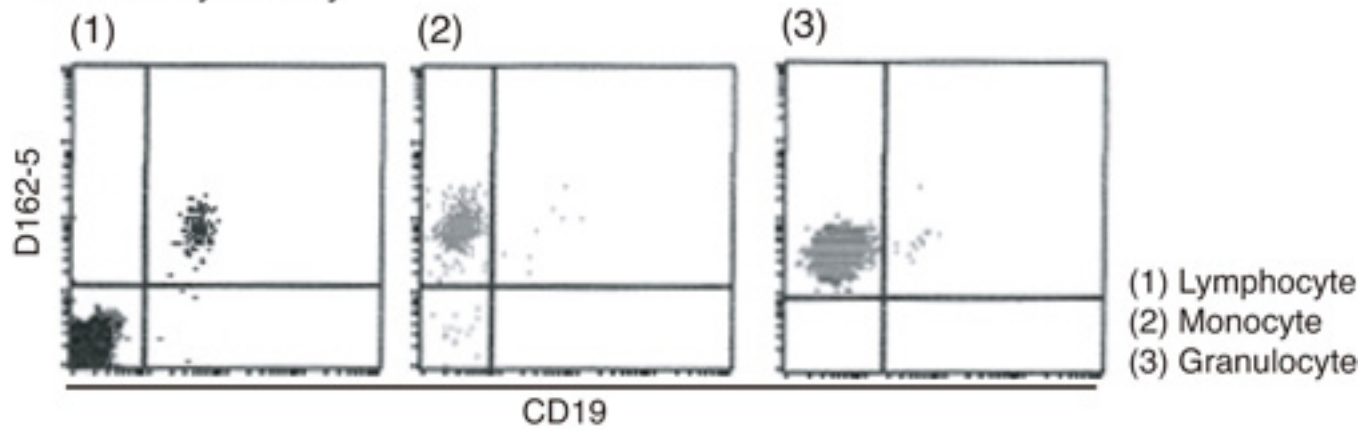


NOX2 / gp91phox Mouse anti-Human Monoclonal (PE) (7D5) Antibody - LS-C179420 - LSBio	
<b>CatalogID:</b>	LS-C179420
<b>Target:</b>	cytochrome b-245, beta polypeptide (CYBB)
<b>Synonyms:</b>	CYBB Antibody, Chronic granulomatous disease Antibody, CGD91-phox Antibody, Cytochrome b558 subunit beta Antibody, Cytochrome b(558) subunit beta Antibody, gp91-1 Antibody, gp91-PHOX Antibody, p22 phagocyte B-cytochrome Antibody, AMCBX2 Antibody, CGD Antibody, Cytochrome b-245 heavy chain Antibody, gp91PHOX Antibody, NADPH oxidase 2 Antibody, NOX2 Antibody, p91-PHOX Antibody
<b>Host</b>	CYBB antibody was produced in Mouse
<b>Clonality:</b>	Monoclonal
<b>Isotype:</b>	IgG1
<b>Clone Name:</b>	7D5
<b>Conjugations:</b>	Phycoerythrin (PE)
<b>Immunogen Species:</b>	NOX2 / gp91phox antibody was raised against Human
<b>Antigen Type:</b>	Protein fraction
<b>Immunogen:</b>	NOX2 / gp91phox antibody was raised against human cytochrome b rich fraction.
<b>Specificity:</b>	Human GP91PHOX / NOX2
<b>Reactivity:</b>	Human
<b>Purification:</b>	Protein A purified
<b>Presentation:</b>	PBS, 1% BSA, 0.09% sodium azide
<b>Recommended Storage:</b>	Store at 4°C.
<b>Usage Summary:</b>	Flo: 20 ul/test;
<b>Uses:</b>	Flow Cytometry (Optimal dilution to be determined by the researcher)
<b>Size:</b>	50 tst

Flow Cytometry Image:

■ Flow Cytometry



Requested From:

Japan

Laboratory Reagent For In Vitro Research Use Only

Not for resale without prior written consent from LifeSpan BioSciences, Inc.

Created on 9/26/2014

© 2014 LifeSpan BioSciences