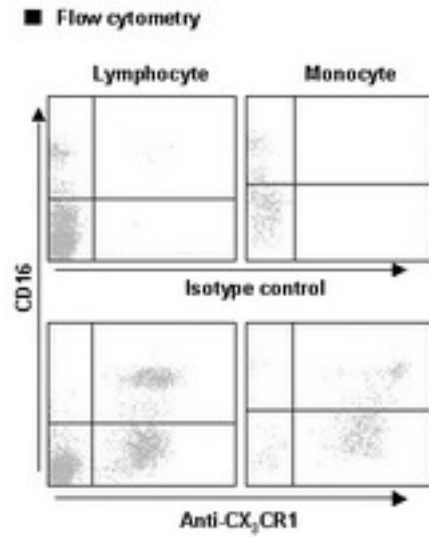


**CX3CR1 Rat anti-Human Monoclonal (PE) (2A9-1) Antibody - LS-C179331 - LSBio**

<b>CatalogID:</b>	LS-C179331
<b>Target:</b>	chemokine (C-X3-C motif) receptor 1 (CX3CR1)
<b>Synonyms:</b>	CX3CR1 Antibody, Beta chemokine receptor-like 1 Antibody, C-X3-C CKR-1 Antibody, Chemokine (C-X3-C) receptor 1 Antibody, CMKBRL1 Antibody, CMK-BRL-1 Antibody, CMKDR1 Antibody, CMK-BRL1 Antibody, CX3C chemokine receptor 1 Antibody, Fkn receptor Antibody, GPR13 Antibody, GPRV28 Antibody, Fractalkine receptor Antibody, G protein-coupled receptor v28 Antibody, G-protein coupled receptor 13 Antibody, V28 Antibody, Chemokine c-x3-c receptor 1 Antibody, G protein-coupled receptor 13 Antibody
<b>Family / Subfamily:</b>	GPCR / Chemokine
<b>Host</b>	CX3CR1 antibody was produced in Rat
<b>Clonality:</b>	Monoclonal
<b>Isotype:</b>	IgG2b,k
<b>Clone Name:</b>	2A9-1
<b>Conjugations:</b>	Phycoerythrin (PE)
<b>Immunogen Species:</b>	CX3CR1 antibody was raised against Human
<b>Antigen Type:</b>	Cells
<b>Immunogen:</b>	CX3CR1 antibody was raised against human CX3CR1 expressing non-mammalian cells.
<b>Specificity:</b>	Human CX3CR1
<b>Reactivity:</b>	Human
<b>Purification:</b>	Protein G purified
<b>Presentation:</b>	PBS, 1% BSA, 0.09% sodium azide
<b>Recommended Storage:</b>	Store at 4°C.
<b>Usage Summary:</b>	Flo: 20 ul/test;
<b>Uses:</b>	Flow Cytometry (Optimal dilution to be determined by the researcher)
<b>Size:</b>	1,000 µl

**Flow Cytometry Image:**



**Requested From:**

Japan

Laboratory Reagent For In Vitro Research Use Only

Not for resale without prior written consent from LifeSpan BioSciences, Inc.

Created on 9/26/2014

© 2014 LifeSpan BioSciences