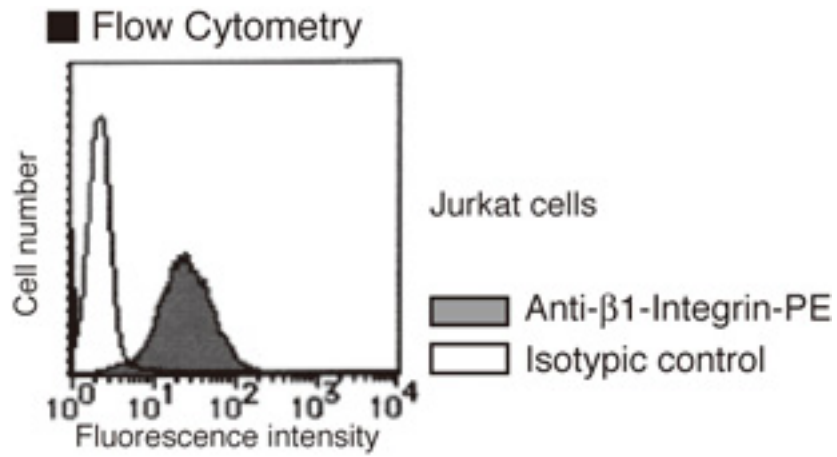


ITGB1 / Integrin Beta 1 / CD29 Mouse anti-Human Monoclonal (PE) (AG89) Antibody - LS-C179297 - LSBio	
<b>CatalogID:</b>	LS-C179297
<b>Target:</b>	integrin, beta 1 (fibronectin receptor, beta polypeptide, antigen CD29 includes MDF2, MSK12) (ITGB1)
<b>Synonyms:</b>	ITGB1 Antibody, CD29 Antibody, CD29 antigen Antibody, Integrin beta-1 Antibody, MDF2 Antibody, MSK12 Antibody, Integrin VLA-4 beta subunit Antibody, VLA-BETA Antibody, VLAB Antibody, Beta 1 integrin Antibody, FNRB Antibody, GPIIA Antibody, Integrin Beta 1 Antibody, VLA-4 subunit beta Antibody
<b>Family / Subfamily:</b>	Integrin / not assigned-Integrin
<b>Host</b>	ITGB1 antibody was produced in Mouse
<b>Clonality:</b>	Monoclonal
<b>Isotype:</b>	IgG1
<b>Clone Name:</b>	AG89
<b>Conjugations:</b>	Phycoerythrin (PE)
<b>Immunogen Species:</b>	ITGB1 / Integrin Beta 1 / CD29 antibody was raised against Human
<b>Antigen Type:</b>	Cells
<b>Immunogen:</b>	ITGB1 / Integrin Beta 1 / CD29 antibody was raised against g-361 (Human melanoma cells).
<b>Specificity:</b>	Human Integrin Beta 1 / CD29
<b>Reactivity:</b>	Human
<b>Purification:</b>	Protein A purified
<b>Presentation:</b>	PBS, 1% BSA, 0.09% sodium azide
<b>Recommended Storage:</b>	Store at 4°C.
<b>Usage Summary:</b>	Flo: 20 ul/test;
<b>Uses:</b>	Flow Cytometry (Optimal dilution to be determined by the researcher)
<b>Size:</b>	50 tst

**Flow Cytometry Image:**



**Requested From:**

Japan

Laboratory Reagent For In Vitro Research Use Only

Not for resale without prior written consent from LifeSpan BioSciences, Inc.

Created on 9/26/2014

© 2014 LifeSpan BioSciences