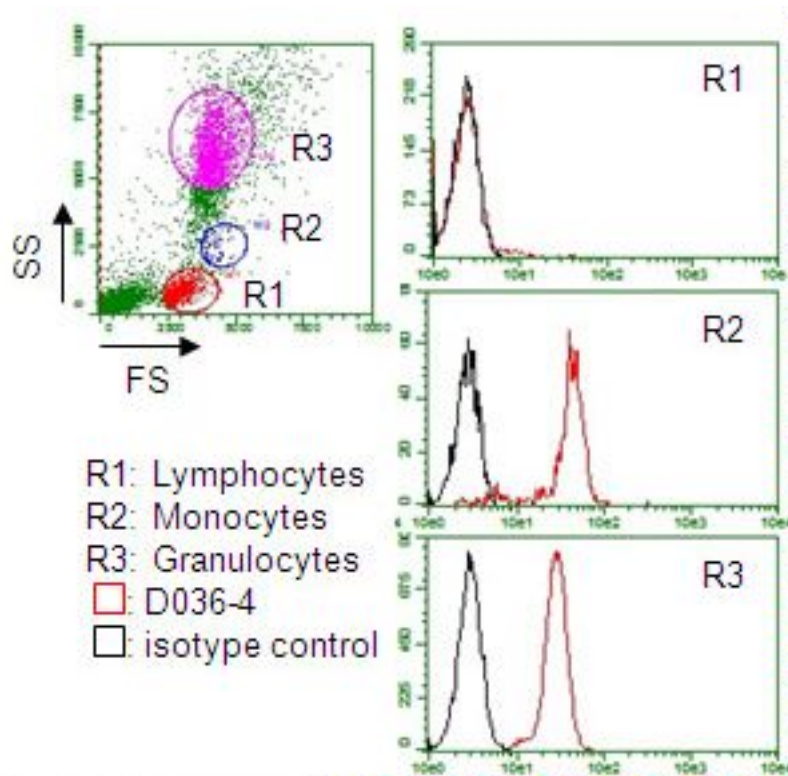


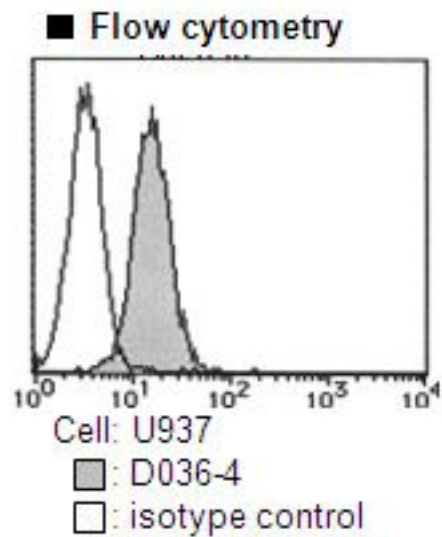
CD157 Mouse anti-Human Monoclonal (FITC) (RF3) Antibody - LS-C179286 - LSBio

CatalogID:	LS-C179286
Target:	bone marrow stromal cell antigen 1 (BST1)
Synonyms:	BST1 Antibody, ADP-ribosyl cyclase 2 Antibody, Bone marrow stromal antigen 1 Antibody, BST-1 Antibody, CD157 antigen Antibody, CADPr hydrolase 2 Antibody, CD157 Antibody, Cyclic ADP-ribose hydrolase 2 Antibody, NAD(+) nucleosidase Antibody
Host	BST1 antibody was produced in Mouse
Clonality:	Monoclonal
Isotype:	IgG1,k
Clone Name:	RF3
Conjugations:	Fluorescein (FITC)
Immunogen Species:	CD157 antibody was raised against Human
Antigen Type:	Cells
Immunogen:	CD157 antibody was raised against rA-derived BM stromal cell line RASV5-5.
Specificity:	Human CD157
Reactivity:	Human
Purification:	Protein A purified
Presentation:	PBS, 1% BSA, 0.09% sodium azide
Recommended Storage:	Store at 4°C.
Uses:	Flow Cytometry (10 - 20 µg/ml) (Optimal dilution to be determined by the researcher)
Size:	50 tst
Concentration:	0.5 mg/ml

Flow Cytometry Image:



Flow Cytometry Image:



Requested From:

Japan

Laboratory Reagent For In Vitro Research Use Only

Not for resale without prior written consent from LifeSpan BioSciences, Inc.

Created on 9/26/2014

© 2014 LifeSpan BioSciences