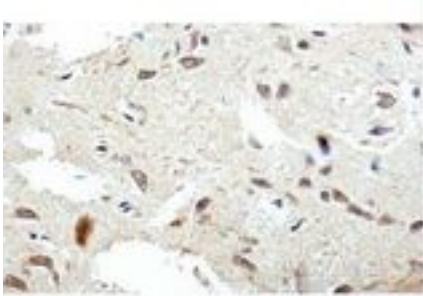


AP3S1 Rabbit anti-Human Polyclonal (aa2-193) Antibody - LS-C178994 - LSBio

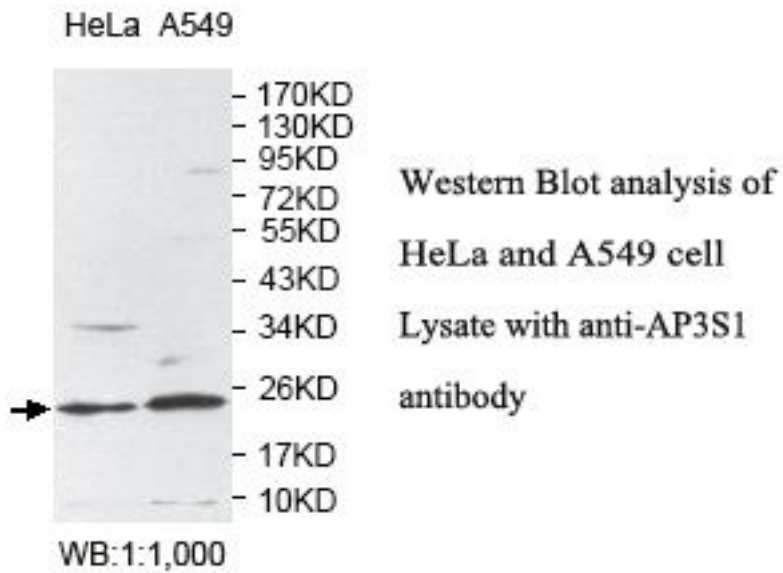
CatalogID:	LS-C178994
Target:	adaptor-related protein complex 3, sigma 1 subunit (AP3S1)
Synonyms:	AP3S1 Antibody, CLAPS3 Antibody, Sigma-3A-adaptin Antibody, Sigma3A Antibody, AP-3 complex sigma-3A subunit Antibody, AP-3 complex subunit sigma-1 Antibody, AP-3 complex subunit sigma-3A Antibody, Sigma3A-adaptin Antibody, Sigma-adaptin 3a Antibody
Host	AP3S1 antibody was produced in Rabbit
Clonality:	Polyclonal
Immunogen Species:	AP3S1 antibody was raised against Human
Antigen Type:	Recombinant protein
Immunogen:	AP3S1 antibody was raised against a recombinant human AP3S1 protein 2-193aa (BC000804).
Specificity:	Human AP3S1.
Epitope:	aa2-193
Reactivity:	Human
Predicted Reactivity:	Mouse, Rat
Purification:	Affinity purified
Presentation:	PBS, pH 7.4, 0.02% sodium azide
Recommended Storage:	Store at -20°C for up to one year.
Uses:	IHC (1:100 - 1:500), Western blot (1:1000 - 1:2000), ELISA (1:20000 - 1:80000) (Optimal dilution to be determined by the researcher)
Size:	100 µl
Concentration:	1 mg/ml

Immunohistochemistry Image:



Immunohistochemical staining of formalin-fixed paraffin-embedded fetal brain showing cytoplasmic staining with anti-AP3S1 antibody at a dilution of 1/100

Western Blot Image:



Requested From:

Japan

Laboratory Reagent For In Vitro Research Use Only

Not for resale without prior written consent from LifeSpan BioSciences, Inc.

Created on 9/26/2014

© 2014 LifeSpan BioSciences