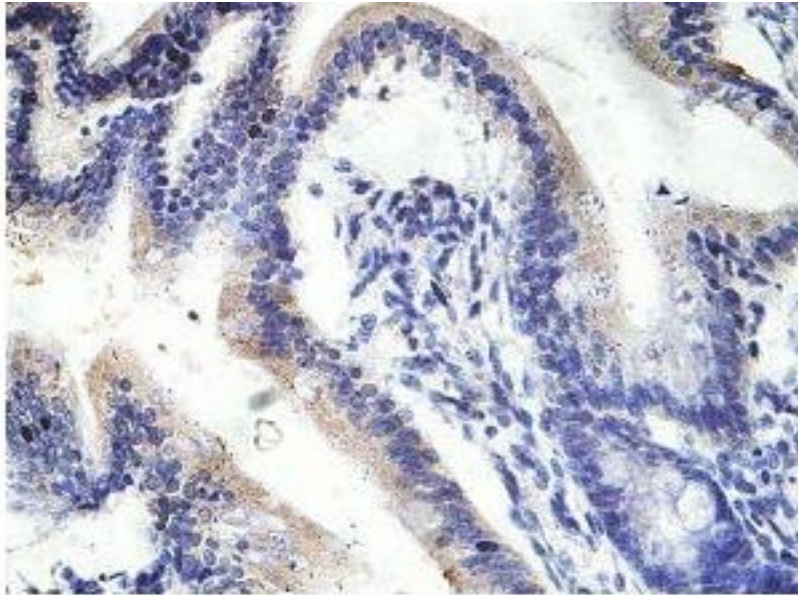


AP4E1 Rabbit anti-Human Polyclonal (aa951-1136) Antibody - LS-C178969 - LSBio

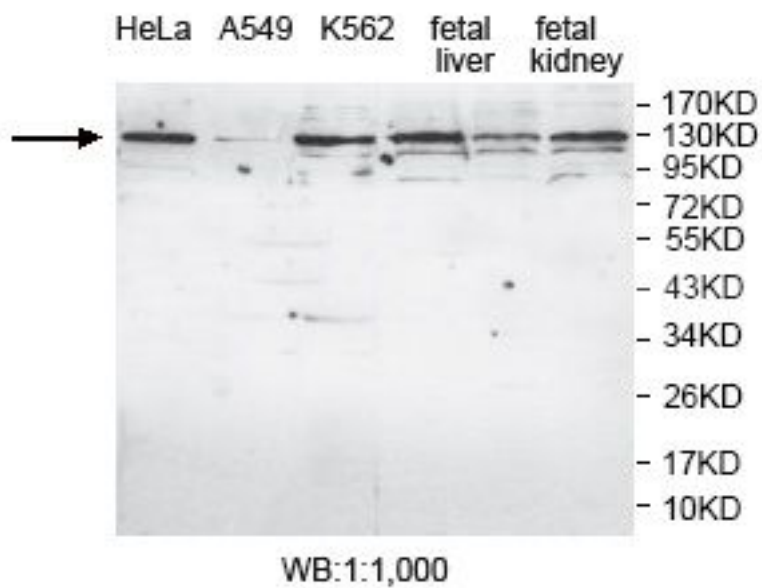
<b>CatalogID:</b>	LS-C178969
<b>Target:</b>	Adaptor-related Protein Complex 4, Epsilon 1 Subunit (AP4E1)
<b>Synonyms:</b>	AP4E1 Antibody, AP-4 complex subunit epsilon-1 Antibody, CPSQ4 Antibody, Epsilon-adaptin Antibody, AP-4-EPSILON Antibody, Epsilon subunit of AP-4 Antibody, SPG51 Antibody
<b>Host</b>	AP4E1 antibody was produced in Rabbit
<b>Clonality:</b>	Polyclonal
<b>Immunogen Species:</b>	AP4E1 antibody was raised against Human
<b>Antigen Type:</b>	Recombinant protein
<b>Immunogen:</b>	AP4E1 antibody was raised against a recombinant human AP4E1 protein 951-1136aa (BC130466).
<b>Specificity:</b>	Human AP4E1.
<b>Epitope:</b>	aa951-1136
<b>Reactivity:</b>	Human
<b>Predicted Reactivity:</b>	Mouse, Rat
<b>Purification:</b>	Affinity purified
<b>Presentation:</b>	PBS, pH 7.4, 0.02% sodium azide
<b>Recommended Storage:</b>	Store at -20°C for up to one year.
<b>Uses:</b>	IHC (1:100 - 1:500), Western blot (1:1000 - 1:2000), ELISA (1:20000 - 1:80000) (Optimal dilution to be determined by the researcher)
<b>Size:</b>	100 µl
<b>Concentration:</b>	1 mg/ml

**Immunohistochemistry Image:**



**Immunohistochemical staining of formalin-fixed paraffin-embedded fetal small intestine showing cytoplasmic staining with anti-AP4E1 antibody at a dilution of 1/100**

**Western Blot Image:**



Requested From:

Japan

Laboratory Reagent For In Vitro Research Use Only

Not for resale without prior written consent from LifeSpan BioSciences, Inc.

Created on 9/26/2014

© 2014 LifeSpan BioSciences