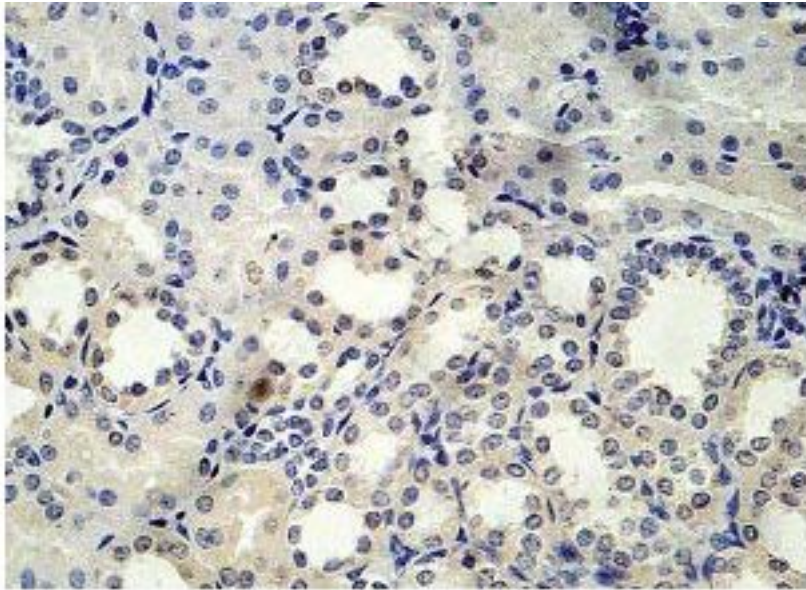


AP1S1 Rabbit anti-Human Polyclonal (aa21-133) Antibody - LS-C178967 - LSBio

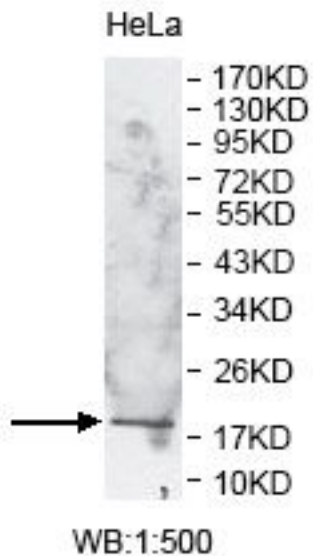
CatalogID:	LS-C178967
Target:	adaptor-related protein complex 1, sigma 1 subunit (AP1S1)
Synonyms:	AP1S1 Antibody, AP19 Antibody, AP-1 complex subunit sigma-1A Antibody, CLAPS1 Antibody, HA1 19 kDa subunit Antibody, SIGMA1A Antibody, Sigma1A-adaptin Antibody, WUGSC:H_DJ0747G18.2 Antibody, Sigma-adaptin 1A Antibody
Host	AP1S1 antibody was produced in Rabbit
Clonality:	Polyclonal
Immunogen Species:	AP1S1 antibody was raised against Human
Antigen Type:	Recombinant protein
Immunogen:	AP1S1 antibody was raised against a recombinant human AP1S1 protein 21-133aa (BC003561).
Specificity:	Human AP1S1.
Epitope:	aa21-133
Reactivity:	Human
Predicted Reactivity:	Mouse, Rat
Purification:	Affinity purified
Presentation:	PBS, pH 7.4, 0.02% sodium azide
Recommended Storage:	Store at -20°C for up to one year.
Uses:	IHC (1:100 - 1:500), Western blot (1:500 - 1:1000), ELISA (1:20000 - 1:80000) (Optimal dilution to be determined by the researcher)
Size:	100 µl
Concentration:	1 mg/ml

Immunohistochemistry Image:



Immunohistochemical staining of formalin-fixed paraffin-embedded fetal kidney showing cytoplasmic staining with anti-AP1S1 antibody at a dilution of 1/100.

Western Blot Image:



Western Blot analysis of HeLa cell Lysate with anti-AP1S1 antibody

Requested From:

Japan

Laboratory Reagent For In Vitro Research Use Only

Not for resale without prior written consent from LifeSpan BioSciences, Inc.

Created on 9/26/2014

© 2014 LifeSpan BioSciences