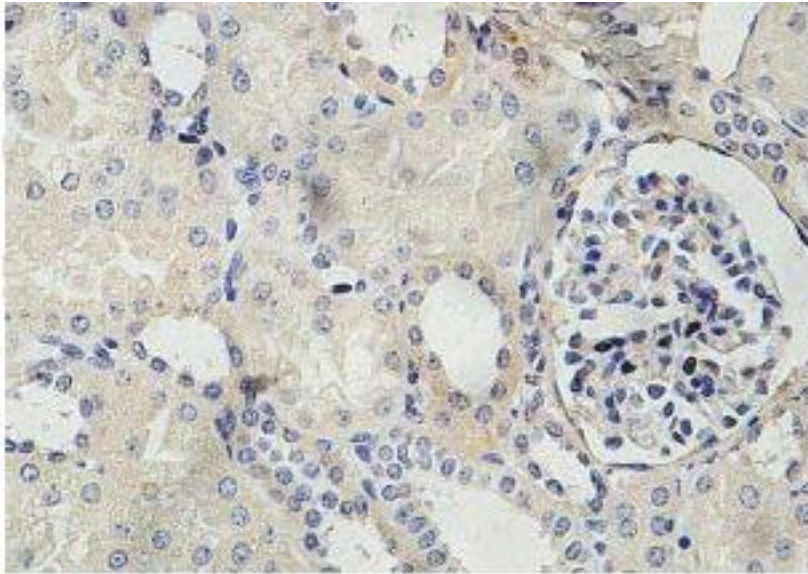


AP50 / AP2M1 Rabbit anti-Human Polyclonal (aa11-215) Antibody - LS-C178947 - LSBio

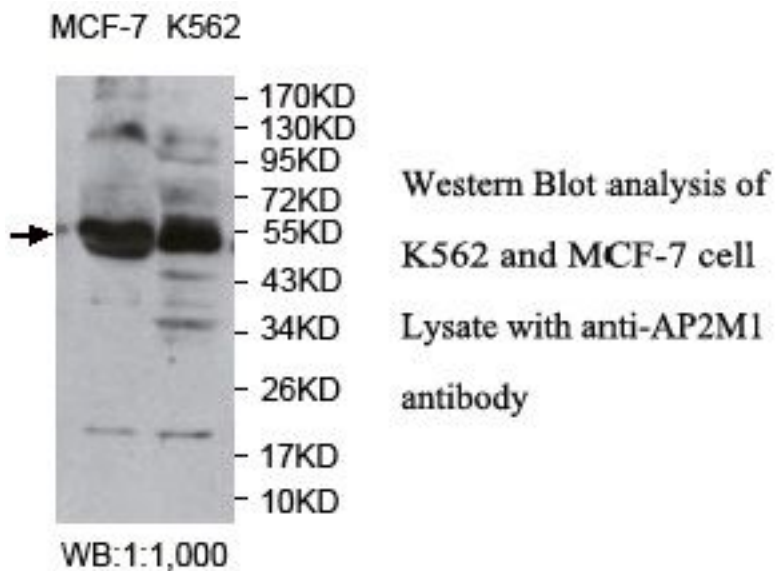
CatalogID:	LS-C178947
Target:	adaptor-related protein complex 2, mu 1 subunit (AP2M1)
Synonyms:	AP2M1 Antibody, Adaptin-mu2 Antibody, AP-2 complex subunit mu Antibody, AP-2 mu 2 chain Antibody, AP-2 mu chain Antibody, AP50 Antibody, CLAPM1 Antibody, Mu2 Antibody, KIAA0109 Antibody, HA2 50 kDa subunit Antibody
Host	AP2M1 antibody was produced in Rabbit
Clonality:	Polyclonal
Immunogen Species:	AP50 / AP2M1 antibody was raised against Human
Antigen Type:	Recombinant protein
Immunogen:	AP50 / AP2M1 antibody was raised against a recombinant human AP2M1 protein 11-215aa (BC013796).
Specificity:	Human AP50 / AP2M1.
Epitope:	aa11-215
Reactivity:	Human
Predicted Reactivity:	Mouse, Rat
Purification:	Affinity purified
Presentation:	PBS, pH 7.4, 0.02% sodium azide
Recommended Storage:	Store at -20°C for up to one year.
Uses:	IHC (1:100 - 1:500), Western blot (1:1000 - 1:2000), ELISA (1:20000 - 1:80000) (Optimal dilution to be determined by the researcher)
Size:	100 µl
Concentration:	1 mg/ml

Immunohistochemistry Image:



Immunohistochemical staining of formalin-fixed paraffin-embedded fetal kidney showing membrane staining with anti-AP2M1 antibody at a dilution of 1/100.

Western Blot Image:



Requested From:

Japan

Laboratory Reagent For In Vitro Research Use Only

Not for resale without prior written consent from LifeSpan BioSciences, Inc.

Created on 9/26/2014

© 2014 LifeSpan BioSciences