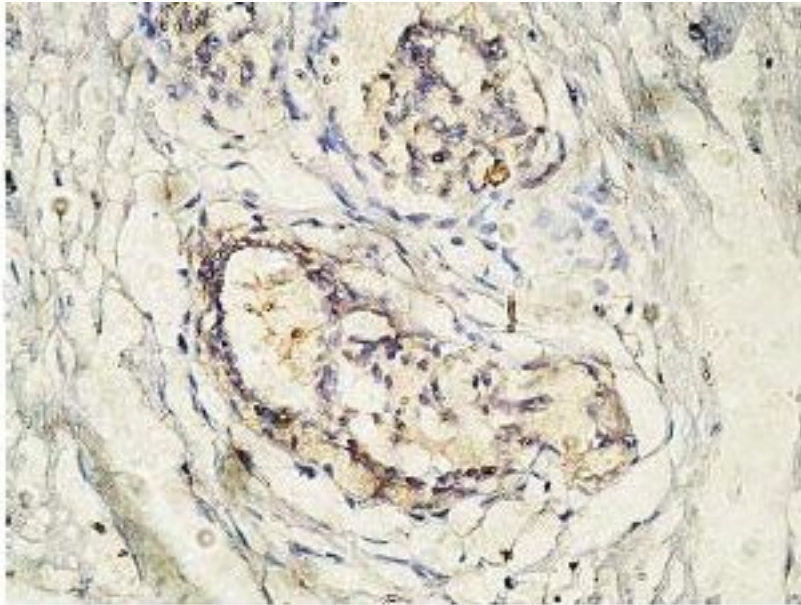


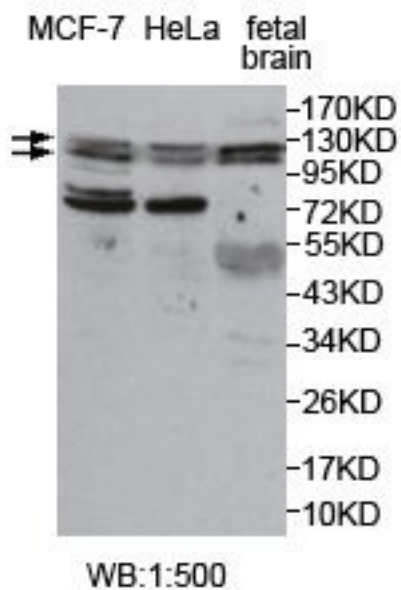
AP2A1 / AP2-Alpha Rabbit anti-Human Polyclonal (aa22-199) Antibody - LS-C178945 - LSBio	
CatalogID:	LS-C178945
Target:	adaptor-related protein complex 2, alpha 1 subunit (AP2A1)
Synonyms:	AP2A1 Antibody, Adaptin, alpha A Antibody, ADTAA Antibody, Alpha-adaptin A Antibody, Alpha1-adaptin Antibody, AP-2 complex subunit alpha-1 Antibody, AP2 Alpha Antibody, CLAPA1 Antibody, AP2-alpha Antibody
Host	AP2A1 antibody was produced in Rabbit
Clonality:	Polyclonal
Immunogen Species:	AP2A1 / AP2-Alpha antibody was raised against Human
Antigen Type:	Recombinant protein
Immunogen:	AP2A1 / AP2-Alpha antibody was raised against a recombinant human AP2A1 protein 22-199aa (BC014214).
Specificity:	Human ADTAA / AP2 Alpha.
Epitope:	aa22-199
Reactivity:	Human
Predicted Reactivity:	Mouse, Rat
Purification:	Affinity purified
Presentation:	PBS, pH 7.4, 0.02% sodium azide
Recommended Storage:	Store at -20°C for up to one year.
Uses:	IHC (1:100 - 1:500), Western blot (1:500 - 1:1000), ELISA (1:20000 - 1:80000) (Optimal dilution to be determined by the researcher)
Size:	100 µl
Concentration:	1 mg/ml

Immunohistochemistry Image:



Immunohistochemical staining of formalin-fixed paraffin-embedded prostate carcinoma showing cytoplasmic staining with anti-AP2A1 antibody at a dilution of 1/100.

Western Blot Image:



Western Blot analysis of fetal brain, fetal brain, HeLa and MCF-7 cell Lysate with anti-AP2A1 antibody

Requested From:

Japan

Laboratory Reagent For In Vitro Research Use Only

Not for resale without prior written consent from LifeSpan BioSciences, Inc.

Created on 9/26/2014

© 2014 LifeSpan BioSciences