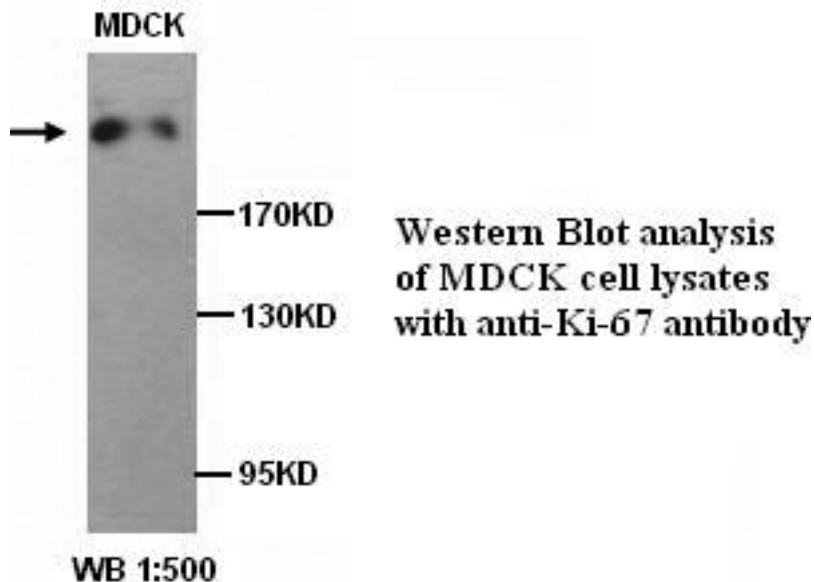


MKI67 / Ki67 Mouse anti-Human Polyclonal Antibody - LS-C178370 - LSBio

CatalogID:	LS-C178370
Target:	marker of proliferation Ki-67 (MKI67)
Synonyms:	MKI67 Antibody, Antigen KI-67 Antibody, Ki67 Antibody, KIA Antibody
Host	MKI67 antibody was produced in Mouse
Clonality:	Polyclonal
Immunogen Species:	MKI67 / Ki67 antibody was raised against Human
Antigen Type:	Synthetic peptide
Immunogen:	MKI67 / Ki67 antibody was raised against synthetic peptide conjugated to KLH.
Specificity:	Human Ki67.
Reactivity:	Human
Purification:	Purified
Presentation:	PBS, pH 7.4, 0.02% sodium azide, 50% glycerol
Recommended Storage:	Store at -20°C for up to one year.
Uses:	Western blot (1:200 - 1:1000), ELISA (1:120000) (Optimal dilution to be determined by the researcher)
Size:	100 µl
Concentration:	1 mg/ml

Western Blot Image:



Requested From:	Japan
Laboratory Reagent For In Vitro Research Use Only	
Not for resale without prior written consent from LifeSpan BioSciences, Inc.	
Created on 9/26/2014	
© 2014 LifeSpan BioSciences	