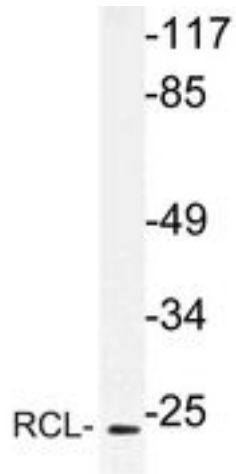


C6orf108 Rabbit anti-Human Polyclonal (Ile42) Antibody - LS-C177813 - LSBio

CatalogID:	LS-C177813
Target:	2'-deoxynucleoside 5'-phosphate N-hydrolase 1 (DNPH1)
Synonyms:	DNPH1 Antibody, C6orf108 Antibody, DJ330M21.3 Antibody, RCL Antibody, RP3-330M21.3 Antibody, C-Myc-responsive protein Rcl Antibody, Putative c-Myc-responsive Antibody
Host	DNPH1 antibody was produced in Rabbit
Clonality:	Polyclonal
Immunogen Species:	C6orf108 antibody was raised against Human
Antigen Type:	Synthetic peptide
Immunogen:	C6orf108 antibody was raised against synthetic peptide around Ile42 of human C6orf108
Specificity:	Human C6orf108
Epitope:	Ile42
Reactivity:	Human
Purification:	Immunoaffinity purified
Presentation:	PBS, pH 7.2, 0.05% sodium azide
Recommended Storage:	Store at 4°C short term. Aliquot and store at -20°C long term. Avoid freeze-thaw cycles.
Uses:	Western blot (1:500 - 1:1000) (Optimal dilution to be determined by the researcher)
Size:	100 µl
Concentration:	1 mg/ml

Western Blot Image:



Western blot of RCL (I42) pAb in extracts from Jurkat cells.

Requested From:

Japan

Laboratory Reagent For In Vitro Research Use Only

Not for resale without prior written consent from LifeSpan BioSciences, Inc.

Created on 9/26/2014

© 2014 LifeSpan BioSciences