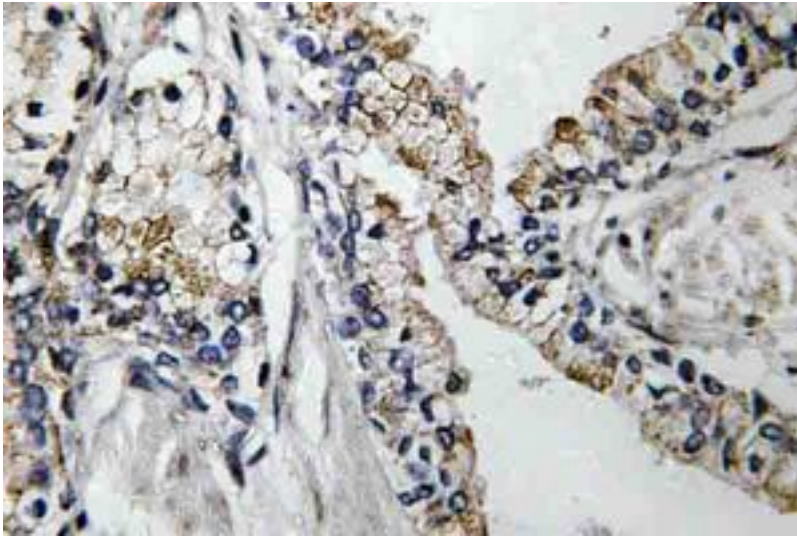


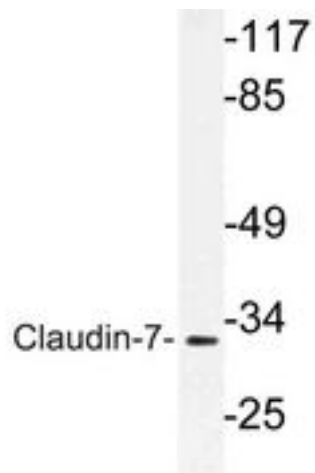
CLDN7 / Claudin 7 Rabbit anti-Human Polyclonal (Ser204) Antibody - LS-C177794 - LSBio	
CatalogID:	LS-C177794
Target:	claudin 7 (CLDN7)
Synonyms:	CLDN7 Antibody, Claudin-7 Antibody, Claudin-1 Antibody, CLDN-7 Antibody, Hs.84359 Antibody, CEPTRL2 Antibody, Claudin 7 Antibody, CPETRL2 Antibody
Family / Subfamily:	Claudin / not assigned-Claudin
Host	CLDN7 antibody was produced in Rabbit
Clonality:	Polyclonal
Immunogen Species:	CLDN7 / Claudin 7 antibody was raised against Human
Antigen Type:	Synthetic peptide
Immunogen:	CLDN7 / Claudin 7 antibody was raised against synthetic peptide around Ser204 of human CLDN7 / Claudin 7
Specificity:	Human CLDN7 / Claudin 7
Epitope:	Ser204
Reactivity:	Human, Mouse, Rat
Purification:	Immunoaffinity purified
Presentation:	PBS, pH 7.2, 0.05% sodium azide
Recommended Storage:	Store at 4°C short term. Aliquot and store at -20°C long term. Avoid freeze-thaw cycles.
Uses:	IHC (1:50 - 1:200), Western blot (1:500 - 1:1000) (Optimal dilution to be determined by the researcher)
Size:	100 µl
Concentration:	1 mg/ml

Immunohistochemistry Image:



IHC of VDR (K45) pAb in paraffin-embedded human prostate carcinoma tissue.

Western Blot Image:



Western blot of VDR (K45) pAb in extracts from rat liver cells.

Requested From:

Japan

Laboratory Reagent For In Vitro Research Use Only

Not for resale without prior written consent from LifeSpan BioSciences, Inc.

Created on 9/26/2014

© 2014 LifeSpan BioSciences