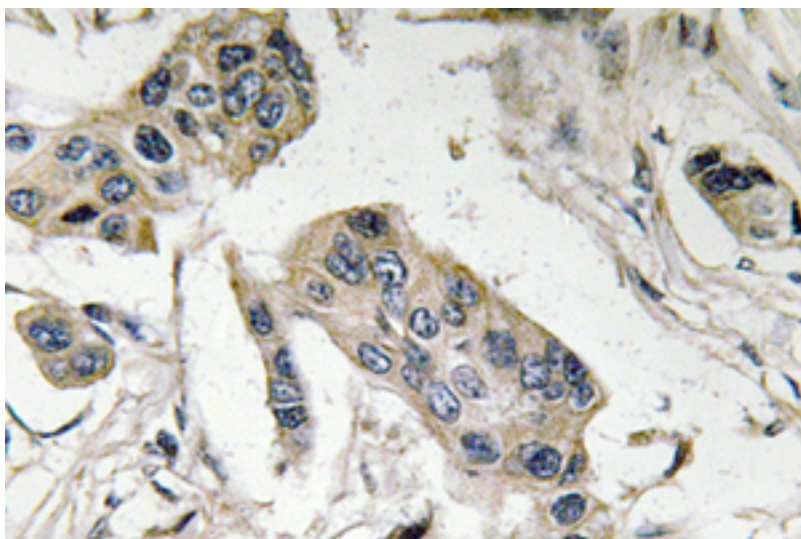


SSEA-1 / Lewis x / CD15 Rabbit anti-Human Polyclonal (Glu71) Antibody - LS-C177510 - LSBio

<b>CatalogID:</b>	LS-C177510
<b>Target:</b>	Stage-Specific Embryonic Antigen-1/Lewis X/CD15
<b>Host</b>	Rabbit
<b>Clonality:</b>	Polyclonal
<b>Immunogen Species:</b>	Human
<b>Antigen Type:</b>	Synthetic peptide
<b>Immunogen:</b>	Synthetic peptide around Glu71 of human CD15
<b>Specificity:</b>	Human CD15
<b>Epitope:</b>	Glu71
<b>Reactivity:</b>	Human
<b>Purification:</b>	Immunoaffinity purified
<b>Presentation:</b>	PBS, pH 7.2, 0.05% sodium azide
<b>Recommended Storage:</b>	Store at 4°C short term. Aliquot and store at -20°C long term. Avoid freeze-thaw cycles.
<b>Uses:</b>	IHC (1:50 - 1:200) (Optimal dilution to be determined by the researcher)
<b>Size:</b>	100 µl
<b>Concentration:</b>	1 mg/ml

**Immunohistochemistry Image:**



IHC of FucT-IV (E71) pAb in paraffin-embedded human breast carcinoma tissue.

<b>Requested From:</b>	Japan
------------------------	-------

Laboratory Reagent For In Vitro Research Use Only

Not for resale without prior written consent from LifeSpan BioSciences, Inc.

Created on 9/26/2014

© 2014 LifeSpan BioSciences