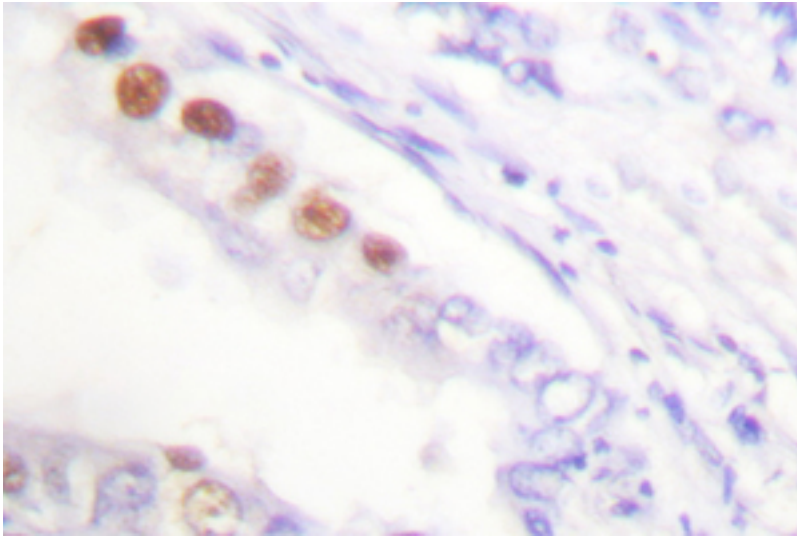


MKI67 / Ki67 Rabbit anti-Human Polyclonal (Val3242) Antibody - LS-C176330 - LSBio

CatalogID:	LS-C176330
Target:	marker of proliferation Ki-67 (MKI67)
Synonyms:	MKI67 Antibody, Antigen KI-67 Antibody, Ki67 Antibody, KIA Antibody
Host	MKI67 antibody was produced in Rabbit
Clonality:	Polyclonal
Immunogen Species:	MKI67 / Ki67 antibody was raised against Human
Antigen Type:	Synthetic peptide
Immunogen:	MKI67 / Ki67 antibody was raised against synthetic peptide around Val3242 of human Ki67
Specificity:	Human Ki67
Epitope:	Val3242
Reactivity:	Human
Purification:	Immunoaffinity purified
Presentation:	PBS, pH 7.2, 0.05% sodium azide
Recommended Storage:	Store at 4°C short term. Aliquot and store at -20°C long term. Avoid freeze-thaw cycles.
Uses:	IHC (1:50 - 1:200), Immunofluorescence (1:50 - 1:200) (Optimal dilution to be determined by the researcher)
Size:	100 µl
Concentration:	1 mg/ml

Immunohistochemistry Image:



IHC of Ki67 (V3242) pAb in paraffin-embedded human lung carcinoma tissue.

Requested From:

Japan

Laboratory Reagent For In Vitro Research Use Only

Not for resale without prior written consent from LifeSpan BioSciences, Inc.

Created on 9/26/2014

© 2014 LifeSpan BioSciences