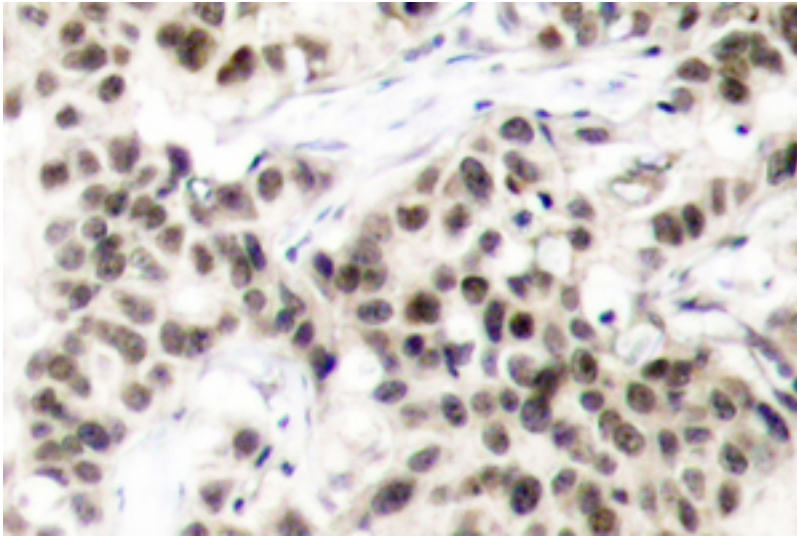


MYC / c-Myc Rabbit anti-Human Polyclonal (Lys52) Antibody - LS-C176134 - LSBio

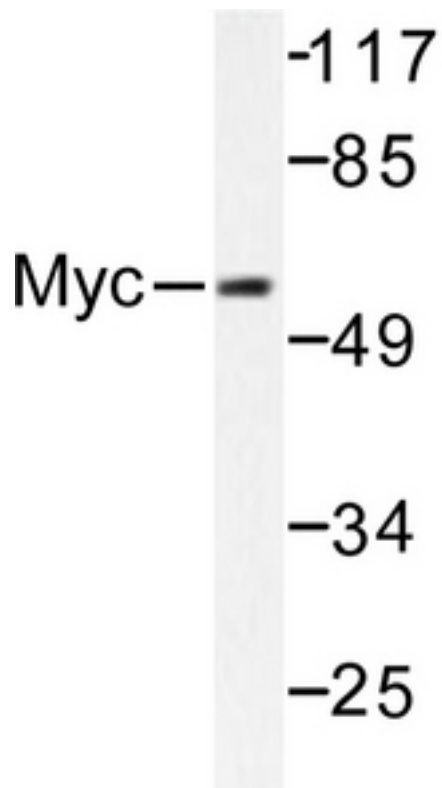
<b>CatalogID:</b>	LS-C176134
<b>Target:</b>	v-myc avian myelocytomatosis viral oncogene homolog
<b>Synonyms:</b>	MYC Antibody, BHLHe39 Antibody, C-Myc Antibody, MRTL Antibody, Myc proto-oncogene protein Antibody, Proto-oncogene c-Myc Antibody, Rats1 Antibody, Transcription factor p64 Antibody, v-myc Antibody
<b>Host</b>	MYC antibody was produced in Rabbit
<b>Clonality:</b>	Polyclonal
<b>Immunogen Species:</b>	MYC / c-Myc antibody was raised against Human
<b>Antigen Type:</b>	Synthetic peptide
<b>Immunogen:</b>	MYC / c-Myc antibody was raised against synthetic peptide around Lys52 of human c-Myc
<b>Specificity:</b>	Human c-Myc
<b>Epitope:</b>	Lys52
<b>Reactivity:</b>	Human, Mouse, Rat
<b>Purification:</b>	Immunoaffinity purified
<b>Presentation:</b>	PBS, pH 7.2, 0.05% sodium azide
<b>Recommended Storage:</b>	Store at 4°C short term. Aliquot and store at -20°C long term. Avoid freeze-thaw cycles.
<b>Uses:</b>	IHC (1:50 - 1:200), Western blot (1:500 - 1:1000) (Optimal dilution to be determined by the researcher)
<b>Size:</b>	100 µl
<b>Concentration:</b>	1 mg/ml

**Immunohistochemistry Image:**



IHC of Myc (K52) pAb in paraffin-embedded human breast carcinoma tissue.

**Western Blot Image:**



Western blot of Myc (K52) pAb in extracts from ovary cancer cells.

**Requested From:**

Japan

Laboratory Reagent For In Vitro Research Use Only

Not for resale without prior written consent from LifeSpan BioSciences, Inc.

Created on 9/26/2014

© 2014 LifeSpan BioSciences