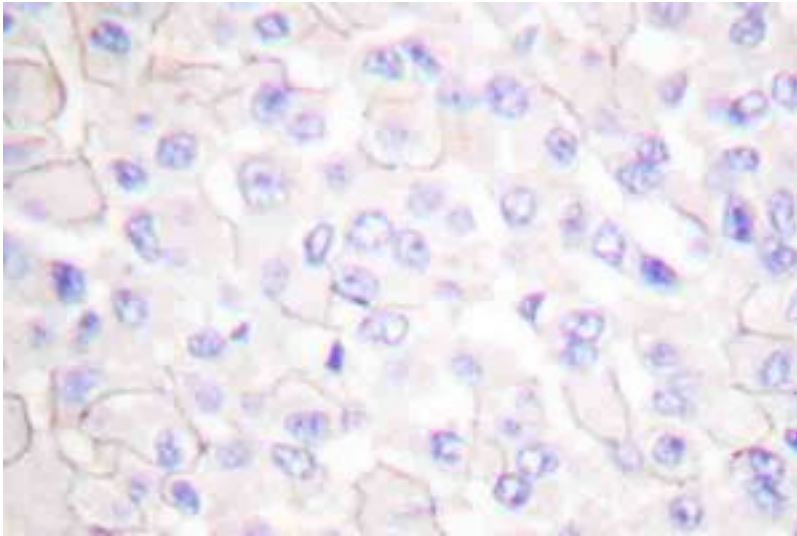


CDH1 / E Cadherin Rabbit anti-Human Polyclonal (Arg868) Antibody - LS-C175998 - LSBio

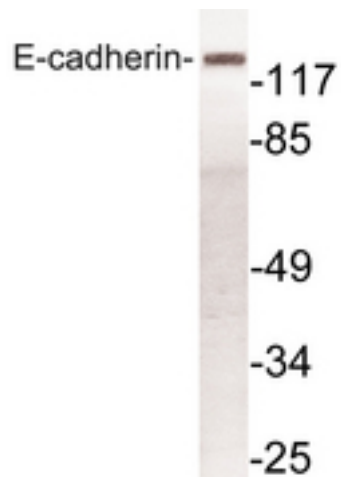
<b>CatalogID:</b>	LS-C175998
<b>Target:</b>	cadherin 1, type 1, E-cadherin (epithelial) (CDH1)
<b>Synonyms:</b>	CDH1 Antibody, CD324 Antibody, CDHE Antibody, Cell-CAM 120/80 Antibody, E Cadherin Antibody, E-Cadherin Antibody, ECAD Antibody, Epithelial cadherin Antibody, Arc-1 Antibody, UVO Antibody, Cadherin-1 Antibody, CAM 120/80 Antibody, CD324 antigen Antibody, LCAM Antibody, Uvomorulin Antibody
<b>Family / Subfamily:</b>	Cadherin / not assigned-Cadherin
<b>Host</b>	CDH1 antibody was produced in Rabbit
<b>Clonality:</b>	Polyclonal
<b>Immunogen Species:</b>	CDH1 / E Cadherin antibody was raised against Human
<b>Antigen Type:</b>	Synthetic peptide
<b>Immunogen:</b>	CDH1 / E Cadherin antibody was raised against synthetic peptide around Arg868 of human E Cadherin
<b>Specificity:</b>	Human E Cadherin
<b>Epitope:</b>	Arg868
<b>Reactivity:</b>	Human, Mouse, Rat
<b>Purification:</b>	Immunoaffinity purified
<b>Presentation:</b>	PBS, pH 7.2, 0.05% sodium azide
<b>Recommended Storage:</b>	Store at 4°C short term. Aliquot and store at -20°C long term. Avoid freeze-thaw cycles.
<b>Uses:</b>	IHC (1:50 - 1:200), Immunofluorescence (1:100 - 1:500), Western blot (1:500 - 1:1000) (Optimal dilution to be determined by the researcher)
<b>Size:</b>	100 µl
<b>Concentration:</b>	1 mg/ml

**Immunohistochemistry Image:**



IHC of E-cadherin (R868) pAb in paraffin-embedded human breast carcinoma tissue.

**Western Blot Image:**



Western blot of E-cadherin (R868) pAb in extracts from HeLa cells.

**Requested From:**

Japan

Laboratory Reagent For In Vitro Research Use Only

Not for resale without prior written consent from LifeSpan BioSciences, Inc.

Created on 9/26/2014

© 2014 LifeSpan BioSciences