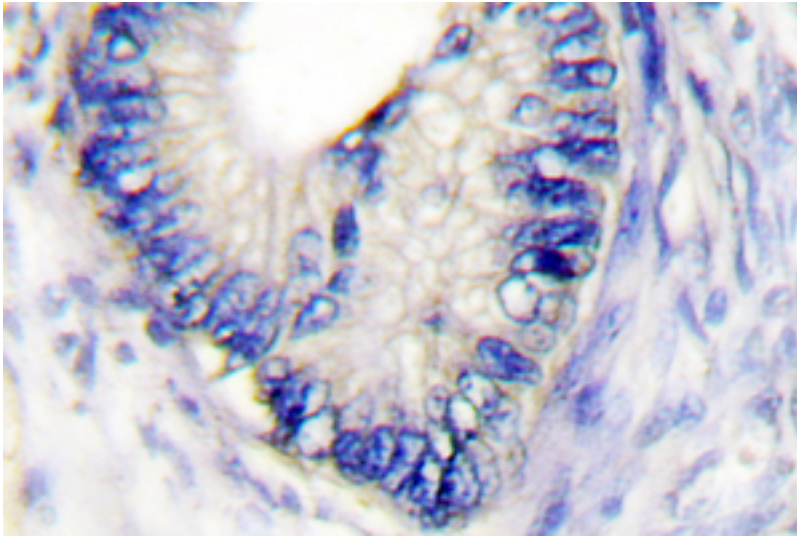


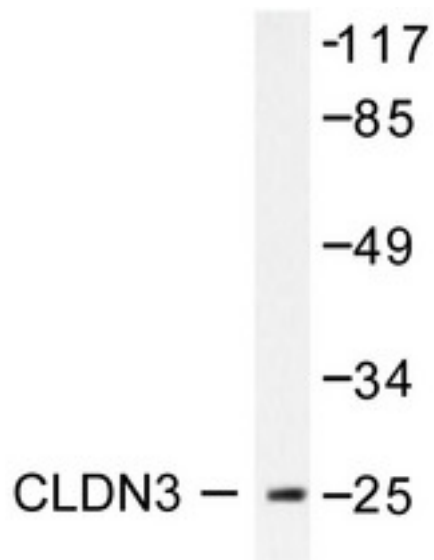
CLDN3 / Claudin 3 Rabbit anti-Human Polyclonal (Thr204) Antibody - LS-C175967 - LSBio	
CatalogID:	LS-C175967
Target:	claudin 3 (CLDN3)
Synonyms:	CLDN3 Antibody, C7orf1 Antibody, Claudin-3 Antibody, CPE-R 2 Antibody, Claudin 3 Antibody, RVP1 Antibody, CPE-R2 Antibody, CPE-receptor 2 Antibody, CPETR2 Antibody, HRVP1 Antibody
Family / Subfamily:	Claudin / not assigned-Claudin
Host	CLDN3 antibody was produced in Rabbit
Clonality:	Polyclonal
Immunogen Species:	CLDN3 / Claudin 3 antibody was raised against Human
Antigen Type:	Synthetic peptide
Immunogen:	CLDN3 / Claudin 3 antibody was raised against synthetic peptide around Thr204 of human CLDN3 / Claudin 3
Specificity:	Human CLDN3 / Claudin 3
Epitope:	Thr204
Reactivity:	Human, Mouse, Rat
Purification:	Immunoaffinity purified
Presentation:	PBS, pH 7.2, 0.05% sodium azide
Recommended Storage:	Store at 4°C short term. Aliquot and store at -20°C long term. Avoid freeze-thaw cycles.
Uses:	IHC (1:50 - 1:200), Immunofluorescence (1:50 - 1:200), Western blot (1:500 - 1:1000) (Optimal dilution to be determined by the researcher)
Size:	100 µl
Concentration:	1 mg/ml

Immunohistochemistry Image:



IHC of Claudin 3 (T204) pAb in paraffin-embedded human colon carcinoma tissue.

Western Blot Image:



Western blot of Claudin 3 (T204) pAb in extracts from HUVEC.

Requested From:

Japan

Laboratory Reagent For In Vitro Research Use Only

Not for resale without prior written consent from LifeSpan BioSciences, Inc.

Created on 9/26/2014

© 2014 LifeSpan BioSciences