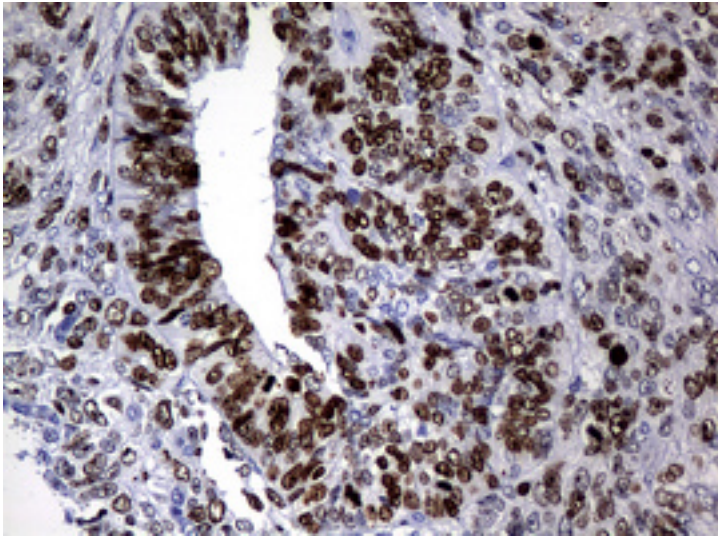


MKI67 / Ki67 Mouse anti-Human Monoclonal (3B6) Antibody - LS-C175591 - LSBio

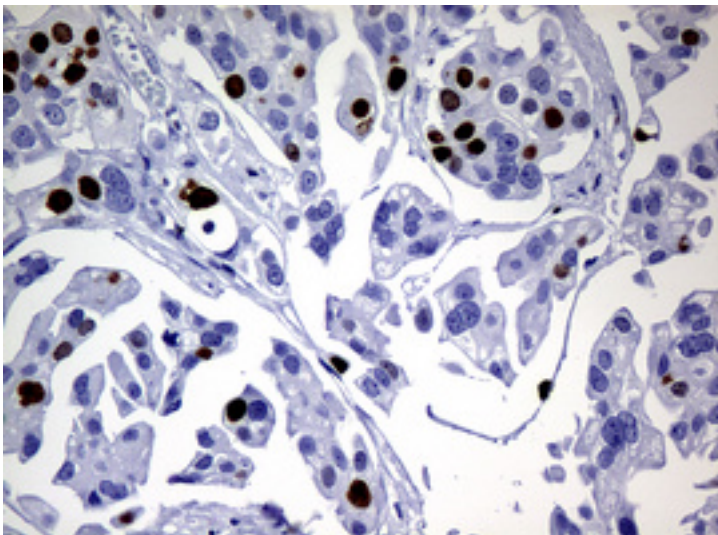
CatalogID:	LS-C175591
Target:	marker of proliferation Ki-67 (MKI67)
Synonyms:	MKI67 Antibody, Antigen KI-67 Antibody, Ki67 Antibody, KIA Antibody
Host	MKI67 antibody was produced in Mouse
Clonality:	Monoclonal
Isotype:	IgG1
Clone Name:	3B6
Immunogen Species:	MKI67 / Ki67 antibody was raised against Human
Antigen Type:	Recombinant protein
Immunogen:	MKI67 / Ki67 antibody was raised against human recombinant protein fragment corresponding to amino acids 1160-1493 of human MKI67 (NP_002408) produced in E. coli.
Specificity:	Human Ki67
Reactivity:	Human
Purification:	Protein A/G purified
Presentation:	PBS, pH 7.3, 1% BSA, 50% glycerol, 0.02% sodium azide
Recommended Storage:	Store at -20°C. Minimize freezing and thawing.
Uses:	IHC - Paraffin (1:150) (Optimal dilution to be determined by the researcher)
Size:	100 µl
Concentration:	0.89 mg/ml

Immunohistochemistry Image:



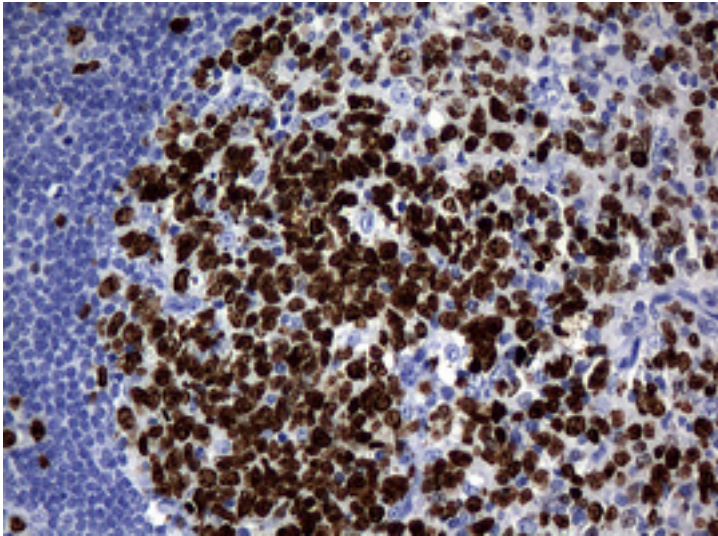
IHC of paraffin-embedded Adenocarcinoma of Human endometrium tissue using anti-MKI67 mouse monoclonal antibody.

Immunohistochemistry Image:



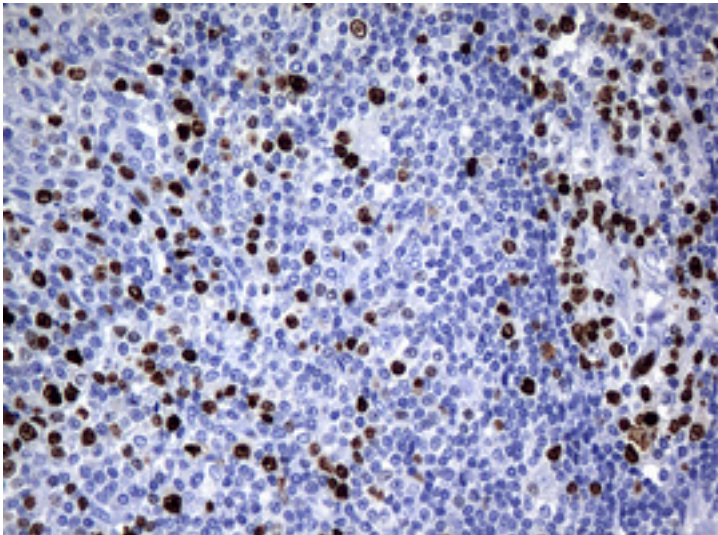
IHC of paraffin-embedded Carcinoma of Human bladder tissue using anti-MKI67 mouse monoclonal antibody.

Immunohistochemistry Image:



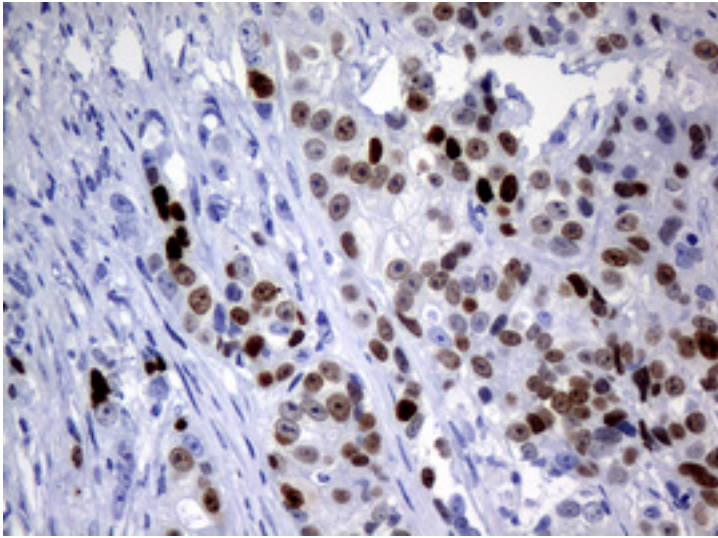
IHC of paraffin-embedded Human tonsil using anti-MKI67 mouse monoclonal antibody.

Immunohistochemistry Image:



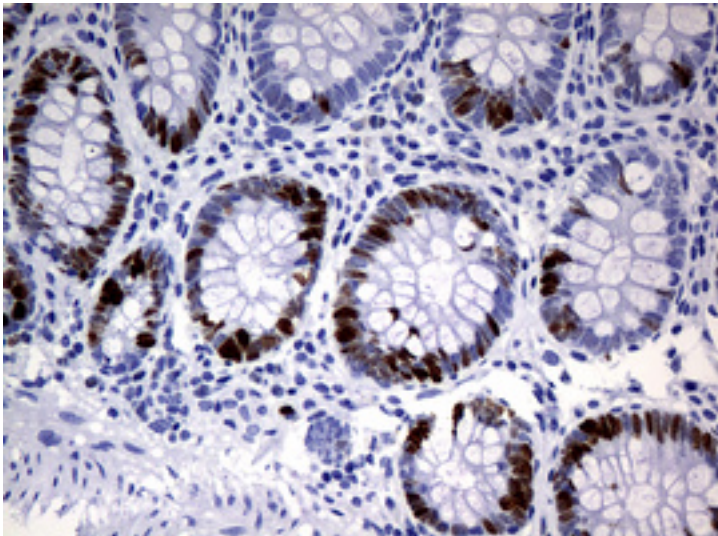
IHC of paraffin-embedded Human lymphoma tissue using anti-MKI67 mouse monoclonal antibody.

Immunohistochemistry Image:



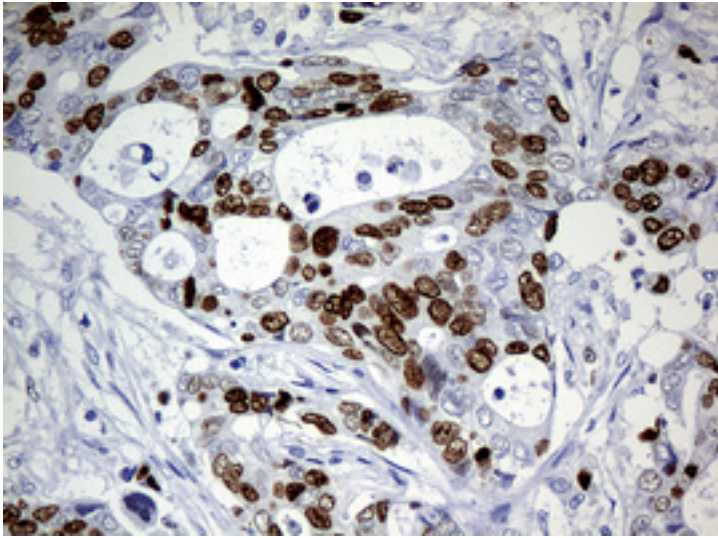
IHC of paraffin-embedded Adenocarcinoma of Human colon tissue using anti-MKI67 mouse monoclonal antibody.

Immunohistochemistry Image:



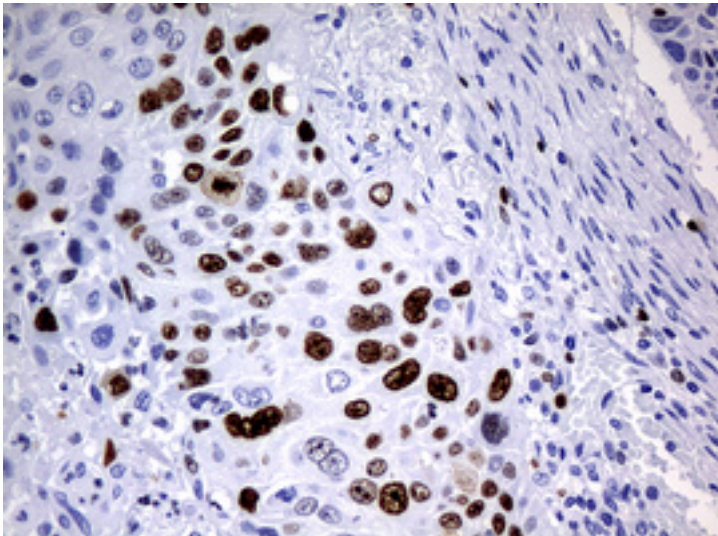
IHC of paraffin-embedded Human colon tissue using anti-MKI67 mouse monoclonal antibody.

Immunohistochemistry Image:



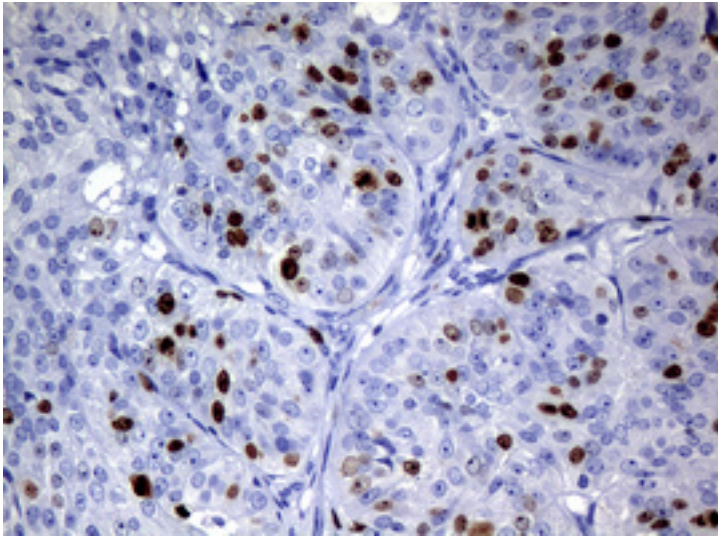
IHC of paraffin-embedded Adenocarcinoma of Human breast tissue using anti-MKI67 mouse monoclonal antibody.

Immunohistochemistry Image:



IHC of paraffin-embedded Carcinoma of Human lung tissue using anti-MKI67 mouse monoclonal antibody.

Immunohistochemistry Image:



IHC of paraffin-embedded Adenocarcinoma of Human ovary tissue using anti-MKI67 mouse monoclonal antibody.

Requested From:

Japan

Laboratory Reagent For In Vitro Research Use Only

Not for resale without prior written consent from LifeSpan BioSciences, Inc.

Created on 9/26/2014

© 2014 LifeSpan BioSciences