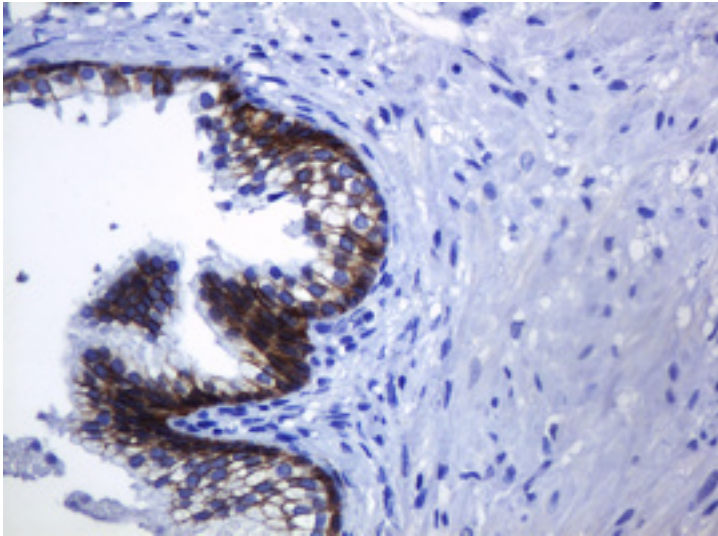


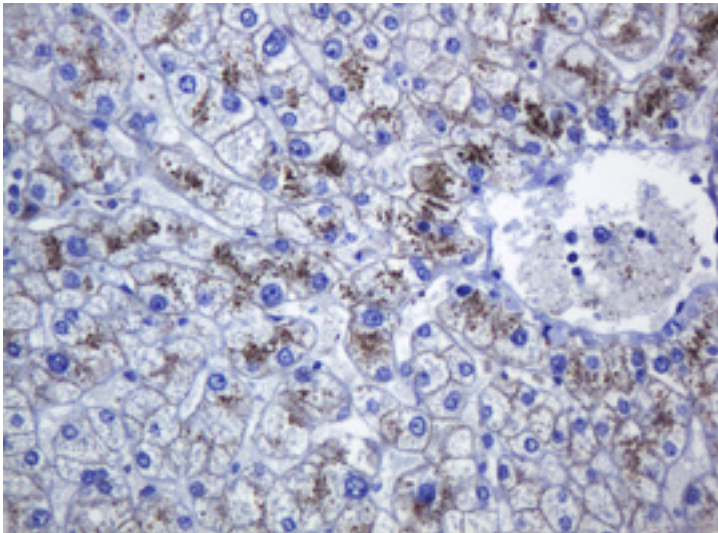
CDH1 / E Cadherin Mouse anti-Human Monoclonal (4F1) Antibody - LS-C175443 - LSBio	
<b>CatalogID:</b>	LS-C175443
<b>Target:</b>	cadherin 1, type 1, E-cadherin (epithelial) (CDH1)
<b>Synonyms:</b>	CDH1 Antibody, CD324 Antibody, CDHE Antibody, Cell-CAM 120/80 Antibody, E Cadherin Antibody, E-Cadherin Antibody, ECAD Antibody, Epithelial cadherin Antibody, Arc-1 Antibody, UVO Antibody, Cadherin-1 Antibody, CAM 120/80 Antibody, CD324 antigen Antibody, LCAM Antibody, Uvomorulin Antibody
<b>Family / Subfamily:</b>	Cadherin / not assigned-Cadherin
<b>Host</b>	CDH1 antibody was produced in Mouse
<b>Clonality:</b>	Monoclonal
<b>Isotype:</b>	IgG1
<b>Clone Name:</b>	4F1
<b>Immunogen Species:</b>	CDH1 / E Cadherin antibody was raised against Human
<b>Antigen Type:</b>	Recombinant protein
<b>Immunogen:</b>	CDH1 / E Cadherin antibody was raised against full length human recombinant protein of human CDH1 (NP_004351) produced in HEK293T cell.
<b>Specificity:</b>	Human E Cadherin
<b>Reactivity:</b>	Human
<b>Purification:</b>	Protein A/G purified
<b>Presentation:</b>	PBS, pH 7.3, 1% BSA, 50% glycerol, 0.02% sodium azide
<b>Recommended Storage:</b>	Store at -20°C. Minimize freezing and thawing.
<b>Uses:</b>	IHC - Paraffin (1:150), Western blot (1:2000) (Optimal dilution to be determined by the researcher)
<b>Size:</b>	100 µl
<b>Concentration:</b>	5.1 mg/ml

**Immunohistochemistry Image:**



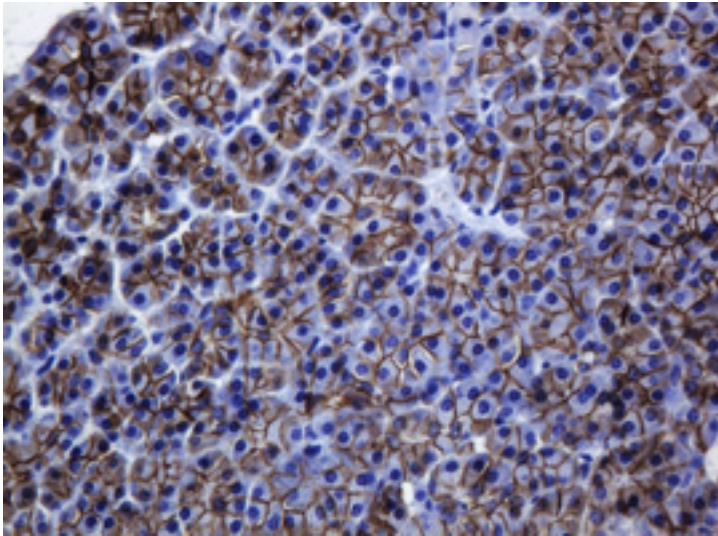
IHC of paraffin-embedded Human prostate tissue using anti-CDH1 mouse monoclonal antibody.

**Immunohistochemistry Image:**



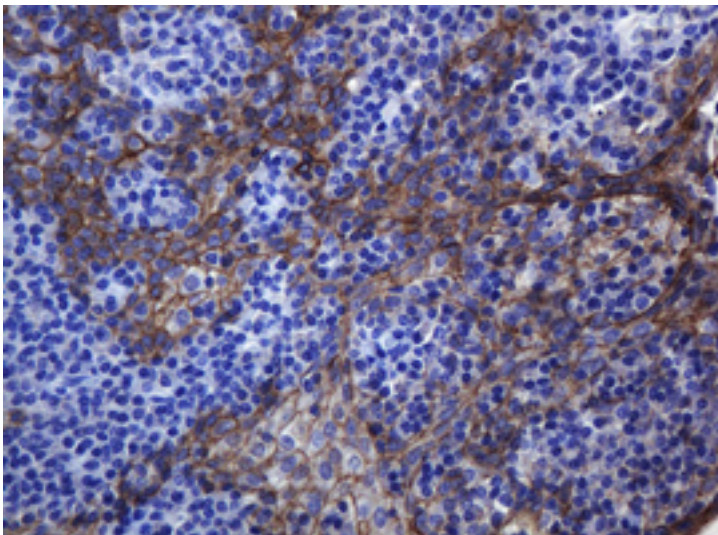
IHC of paraffin-embedded Human liver tissue using anti-CDH1 mouse monoclonal antibody.

**Immunohistochemistry Image:**



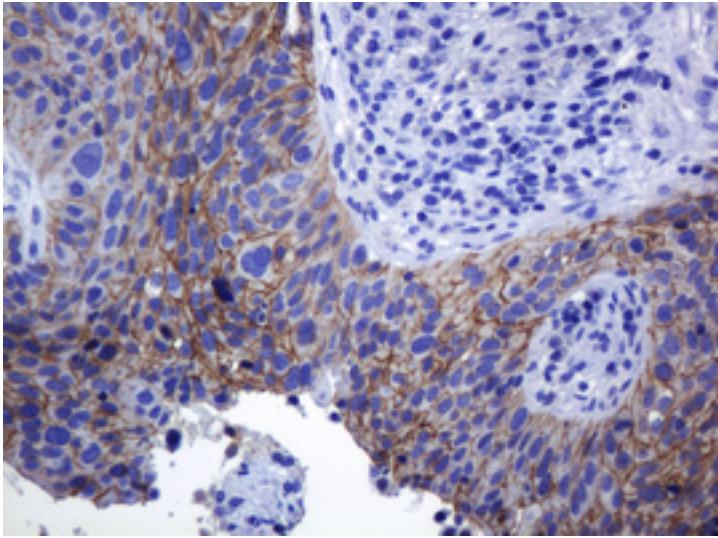
IHC of paraffin-embedded Human pancreas tissue using anti-CDH1 mouse monoclonal antibody.

**Immunohistochemistry Image:**



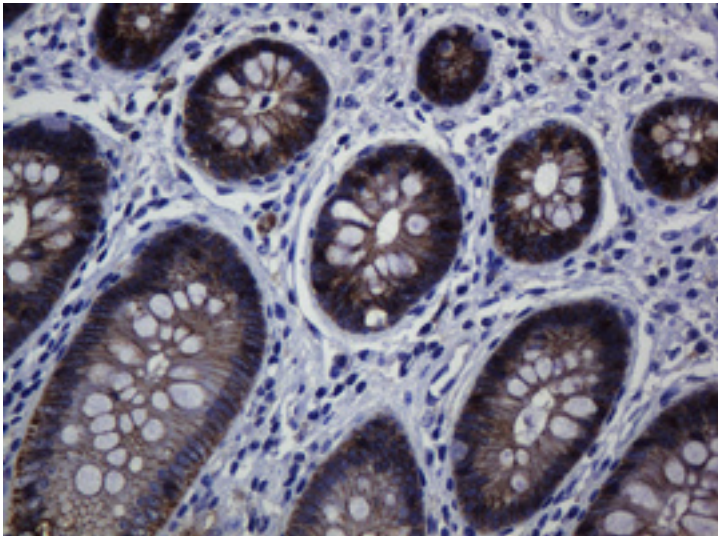
IHC of paraffin-embedded Human tonsil using anti-CDH1 mouse monoclonal antibody.

**Immunohistochemistry Image:**



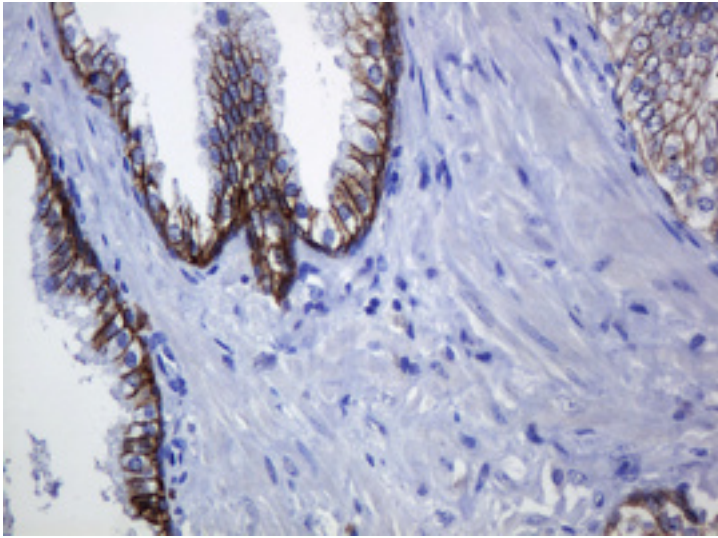
IHC of paraffin-embedded Carcinoma of Human lung tissue using anti-CDH1 mouse monoclonal antibody.

**Immunohistochemistry Image:**



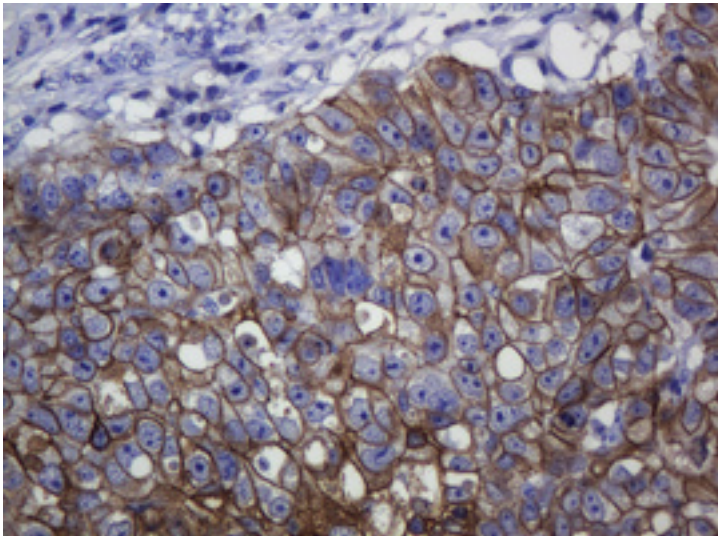
IHC of paraffin-embedded Human colon tissue using anti-CDH1 mouse monoclonal antibody.

**Immunohistochemistry Image:**



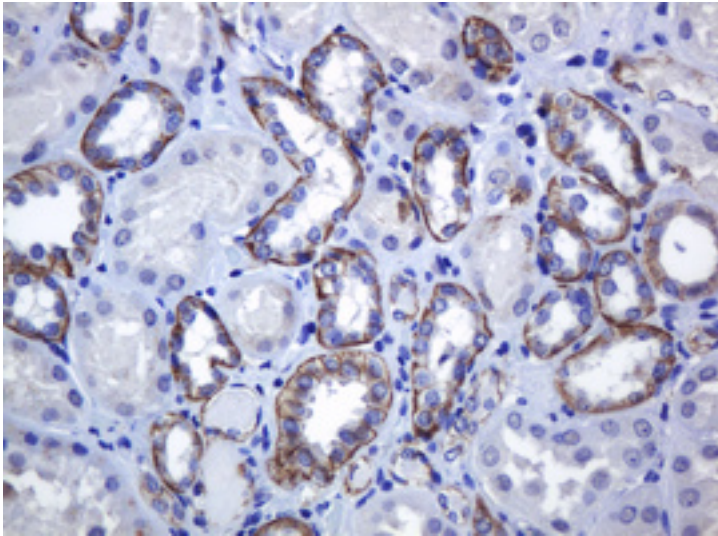
IHC of paraffin-embedded Carcinoma of Human prostate tissue using anti-CDH1 mouse monoclonal antibody.

**Immunohistochemistry Image:**



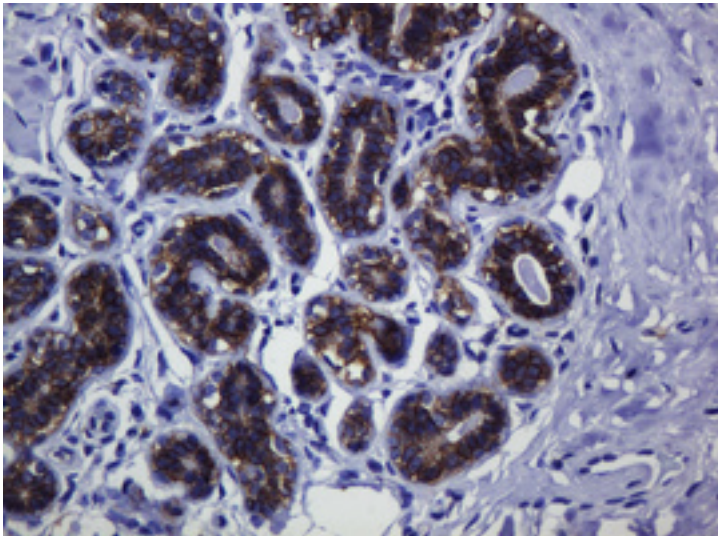
IHC of paraffin-embedded Adenocarcinoma of Human colon tissue using anti-CDH1 mouse monoclonal antibody.

**Immunohistochemistry Image:**



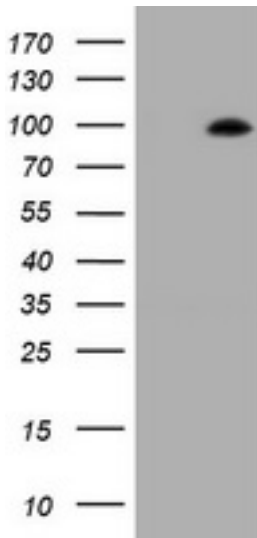
IHC of paraffin-embedded Human Kidney tissue using anti-CDH1 mouse monoclonal antibody.

**Immunohistochemistry Image:**



IHC of paraffin-embedded Human breast tissue using anti-CDH1 mouse monoclonal antibody.

**Western Blot Image:**



HEK293T cells were transfected with the pCMV6-ENTRY control (Left lane) or pCMV6-ENTRY CDH1 (Right lane) cDNA for 48 hrs and lysed. Equivalent amounts of cell lysates (5 ug per lane) were separated by SDS-PAGE and immunoblotted with anti-CDH1.

**Requested From:**

Japan

Laboratory Reagent For In Vitro Research Use Only

Not for resale without prior written consent from LifeSpan BioSciences, Inc.

Created on 9/26/2014

© 2014 LifeSpan BioSciences