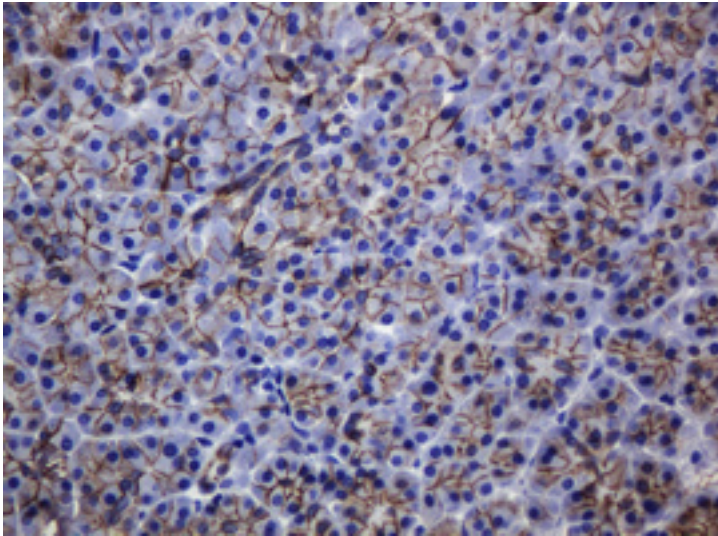


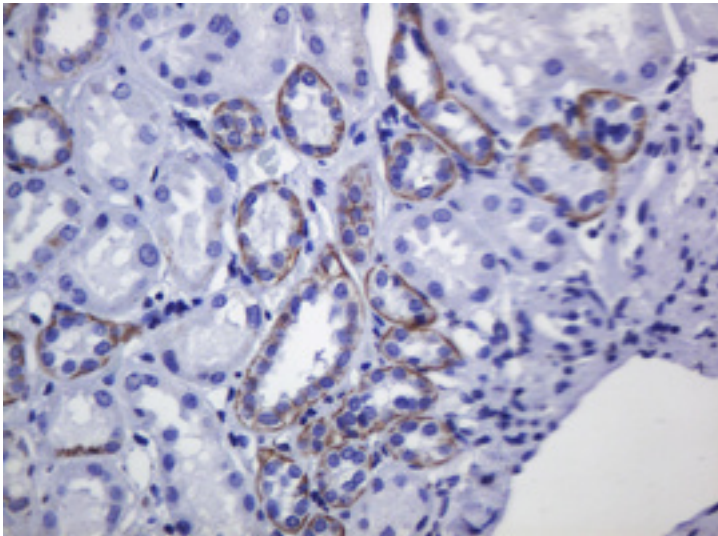
CDH1 / E Cadherin Mouse anti-Human Monoclonal (3E2) Antibody - LS-C175433 - LSBio	
CatalogID:	LS-C175433
Target:	cadherin 1, type 1, E-cadherin (epithelial) (CDH1)
Synonyms:	CDH1 Antibody, CD324 Antibody, CDHE Antibody, Cell-CAM 120/80 Antibody, E Cadherin Antibody, E-Cadherin Antibody, ECAD Antibody, Epithelial cadherin Antibody, Arc-1 Antibody, UVO Antibody, Cadherin-1 Antibody, CAM 120/80 Antibody, CD324 antigen Antibody, LCAM Antibody, Uvomorulin Antibody
Family / Subfamily:	Cadherin / not assigned-Cadherin
Host	CDH1 antibody was produced in Mouse
Clonality:	Monoclonal
Isotype:	IgG1
Clone Name:	3E2
Immunogen Species:	CDH1 / E Cadherin antibody was raised against Human
Antigen Type:	Recombinant protein
Immunogen:	CDH1 / E Cadherin antibody was raised against full length human recombinant protein of human CDH1 (NP_004351) produced in HEK293T cell.
Specificity:	Human E Cadherin
Reactivity:	Human
Purification:	Protein A/G purified
Presentation:	PBS, pH 7.3, 1% BSA, 50% glycerol, 0.02% sodium azide
Recommended Storage:	Store at -20°C. Minimize freezing and thawing.
Uses:	IHC - Paraffin (1:150), Western blot (1:2000) (Optimal dilution to be determined by the researcher)
Size:	100 µl
Concentration:	5.78 mg/ml

Immunohistochemistry Image:



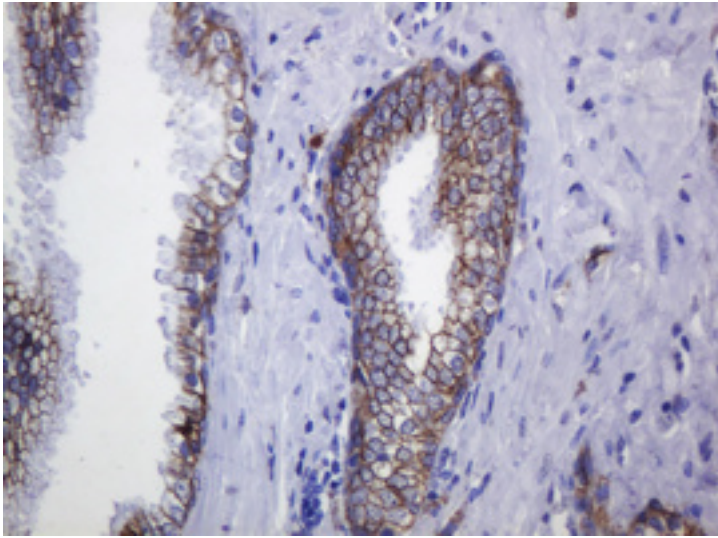
IHC of paraffin-embedded Human pancreas tissue using anti-CDH1 mouse monoclonal antibody.

Immunohistochemistry Image:



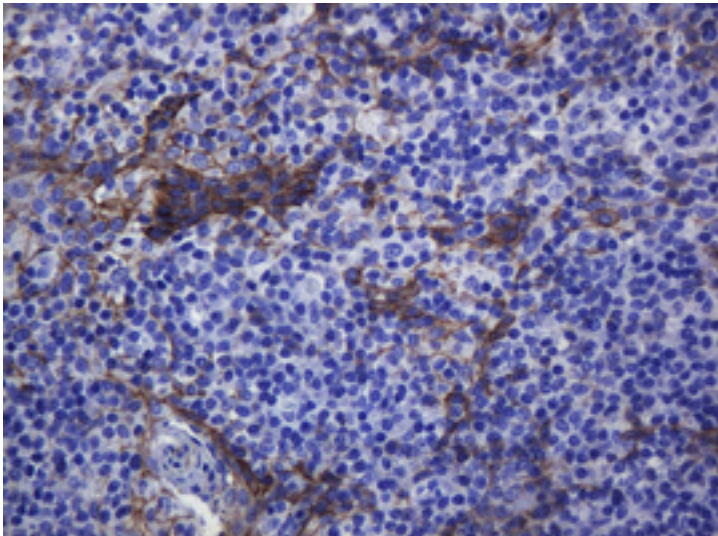
IHC of paraffin-embedded Human Kidney tissue using anti-CDH1 mouse monoclonal antibody.

Immunohistochemistry Image:



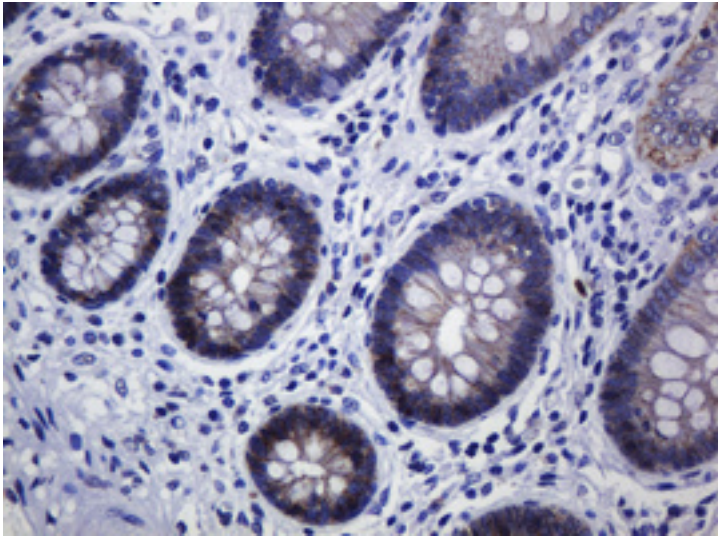
IHC of paraffin-embedded Carcinoma of Human prostate tissue using anti-CDH1 mouse monoclonal antibody.

Immunohistochemistry Image:



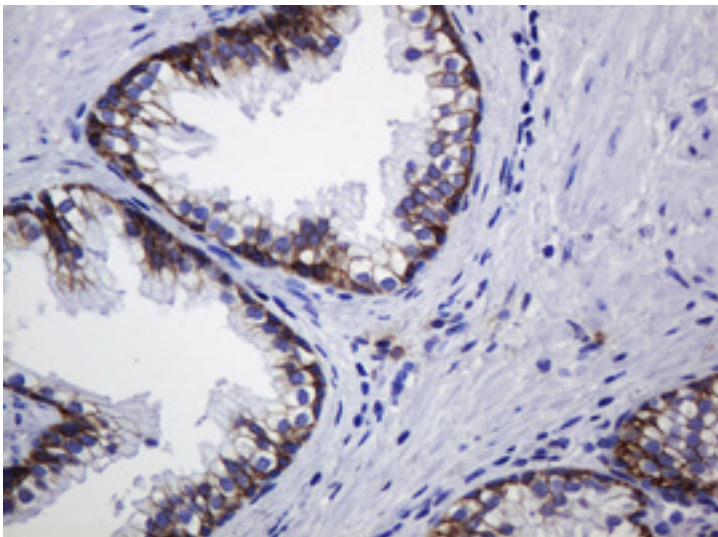
IHC of paraffin-embedded Human tonsil using anti-CDH1 mouse monoclonal antibody.

Immunohistochemistry Image:



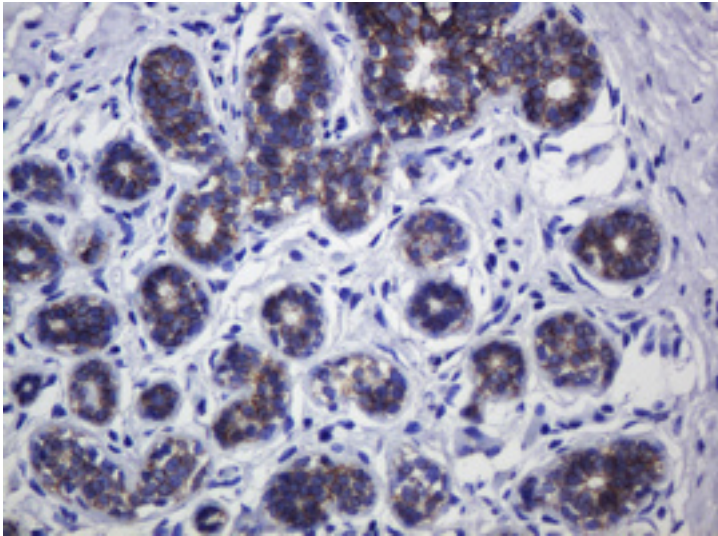
IHC of paraffin-embedded Human colon tissue using anti-CDH1 mouse monoclonal antibody.

Immunohistochemistry Image:



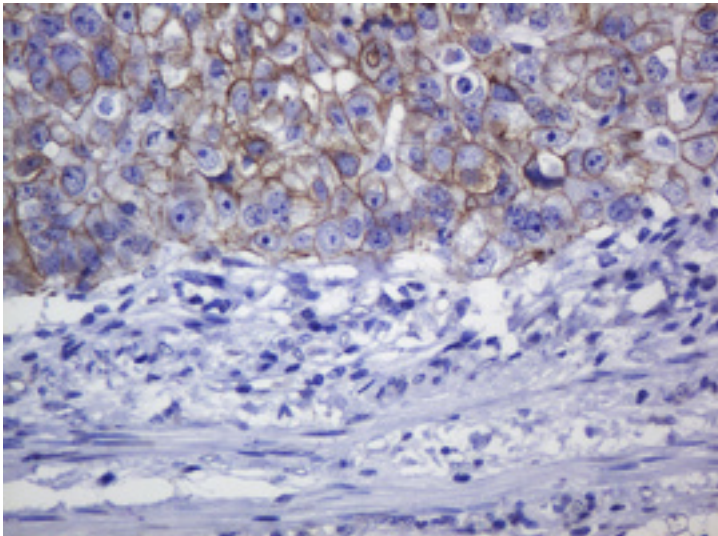
IHC of paraffin-embedded Human prostate tissue using anti-CDH1 mouse monoclonal antibody.

Immunohistochemistry Image:



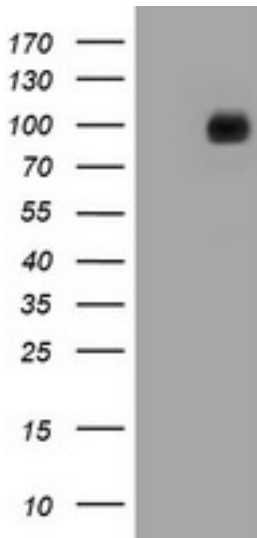
IHC of paraffin-embedded Human breast tissue using anti-CDH1 mouse monoclonal antibody.

Immunohistochemistry Image:



IHC of paraffin-embedded Adenocarcinoma of Human colon tissue using anti-CDH1 mouse monoclonal antibody.

Western Blot Image:



HEK293T cells were transfected with the pCMV6-ENTRY control (Left lane) or pCMV6-ENTRY CDH1 (Right lane) cDNA for 48 hrs and lysed. Equivalent amounts of cell lysates (5 ug per lane) were separated by SDS-PAGE and immunoblotted with anti-CDH1.

Requested From:

Japan

Laboratory Reagent For In Vitro Research Use Only

Not for resale without prior written consent from LifeSpan BioSciences, Inc.

Created on 9/26/2014

© 2014 LifeSpan BioSciences