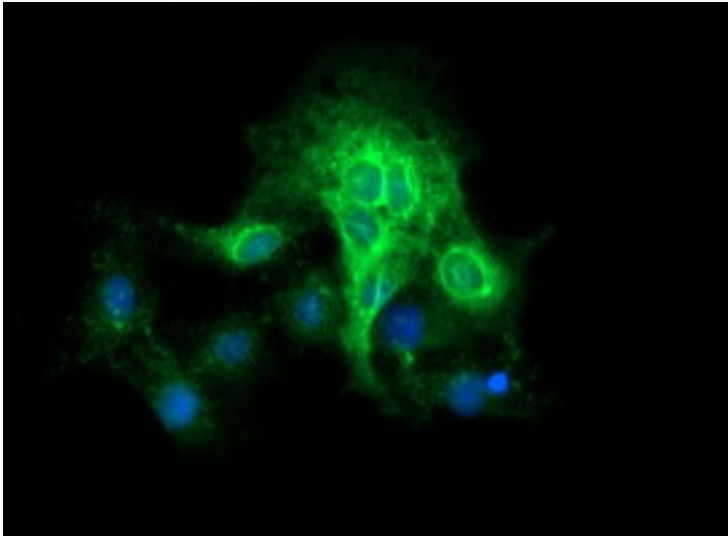


**CD19 Mouse anti-Human Monoclonal (2F6) Antibody - LS-C174740 - LSBio**

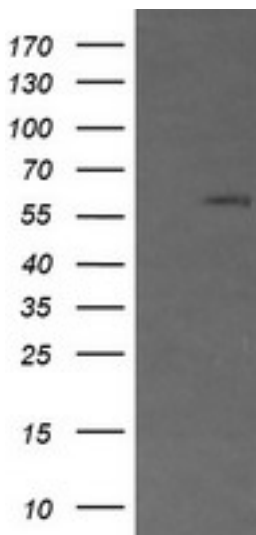
<b>CatalogID:</b>	LS-C174740
<b>Target:</b>	CD19 molecule
<b>Synonyms:</b>	CD19 Antibody, B-lymphocyte antigen CD19 Antibody, CD19 molecule Antibody, Differentiation antigen CD19 Antibody, T-cell surface antigen Leu-12 Antibody, B4 Antibody, CD19 antigen Antibody, CVID3 Antibody
<b>Host</b>	CD19 antibody was produced in Mouse
<b>Clonality:</b>	Monoclonal
<b>Isotype:</b>	IgG2a
<b>Clone Name:</b>	2F6
<b>Immunogen Species:</b>	CD19 antibody was raised against Human
<b>Antigen Type:</b>	Recombinant protein
<b>Immunogen:</b>	CD19 antibody was raised against full length human recombinant protein of human CD19(NP_001761) produced in HEK293T cell.
<b>Specificity:</b>	Human CD19
<b>Reactivity:</b>	Human
<b>Purification:</b>	Protein A/G purified
<b>Presentation:</b>	PBS, pH 7.3, 1% BSA, 50% glycerol, 0.02% sodium azide
<b>Recommended Storage:</b>	Store at -20°C. Minimize freezing and thawing.
<b>Uses:</b>	Immunofluorescence (1:100), Western blot (1:4000) (Optimal dilution to be determined by the researcher)
<b>Size:</b>	100 µl
<b>Concentration:</b>	0.82 mg/ml

**Immunofluorescence Image:**



Anti-CD19 mouse monoclonal antibody immunofluorescent staining of COS7 cells transiently transfected by pCMV6-ENTRY CD19.

**Western Blot Image:**



HEK293T cells were transfected with the pCMV6-ENTRY control (Left lane) or pCMV6-ENTRY CD19 (Right lane) cDNA for 48 hrs and lysed. Equivalent amounts of cell lysates (5 ug per lane) were separated by SDS-PAGE and immunoblotted with anti-CD19.

**Requested From:**

Japan

Laboratory Reagent For In Vitro Research Use Only

Not for resale without prior written consent from LifeSpan BioSciences, Inc.

Created on 9/26/2014

© 2014 LifeSpan BioSciences