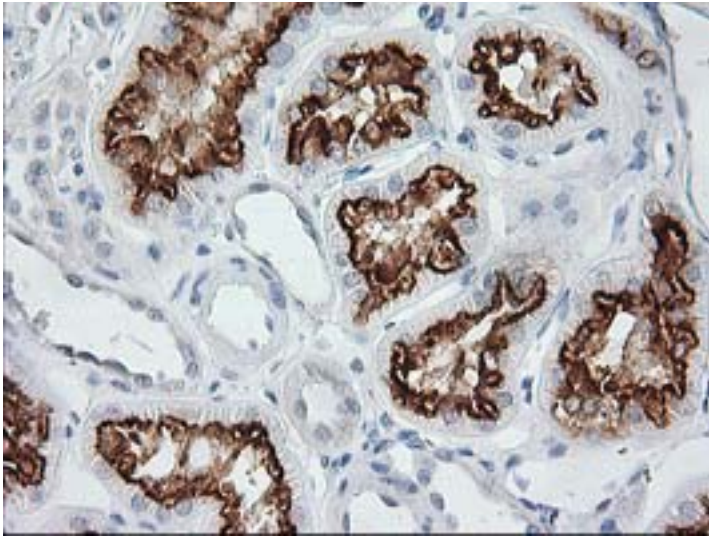


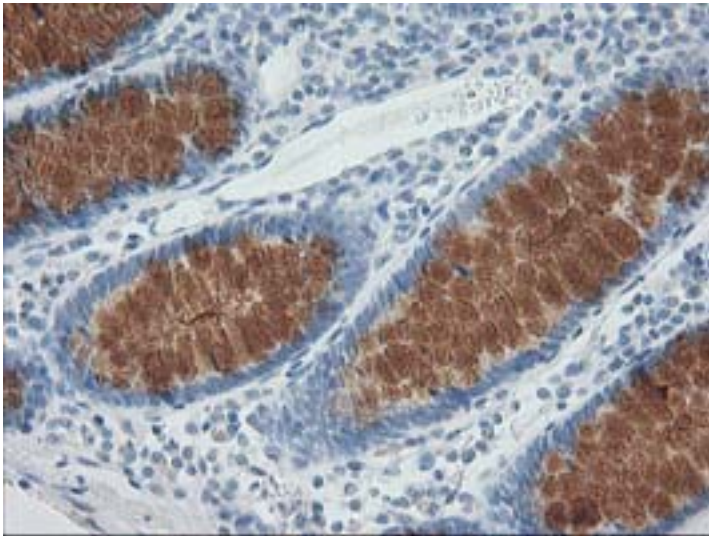
AP50 / AP2M1 Mouse anti-Human Monoclonal (2F11) Antibody - LS-C173016 - LSBio	
CatalogID:	LS-C173016
Target:	adaptor-related protein complex 2, mu 1 subunit (AP2M1)
Synonyms:	AP2M1 Antibody, Adaptin-mu2 Antibody, AP-2 complex subunit mu Antibody, AP-2 mu 2 chain Antibody, AP-2 mu chain Antibody, AP50 Antibody, CLAPM1 Antibody, Mu2 Antibody, KIAA0109 Antibody, HA2 50 kDa subunit Antibody
Host	AP2M1 antibody was produced in Mouse
Clonality:	Monoclonal
Isotype:	IgG1
Clone Name:	2F11
Immunogen Species:	AP50 / AP2M1 antibody was raised against Human
Antigen Type:	Recombinant protein
Immunogen:	AP50 / AP2M1 antibody was raised against human recombinant protein fragment corresponding to amino acids 97-383 of human AP2M1 (NP_001020376) produced in E. coli.
Specificity:	Human AP50 / AP2M1
Reactivity:	Human, Rat, Dog
Purification:	Protein A/G purified
Presentation:	PBS, pH 7.3, 1% BSA, 50% glycerol, 0.02% sodium azide
Recommended Storage:	Store at -20°C. Minimize freezing and thawing.
Uses:	IHC - Paraffin (1:150), Western blot (1:500 - 1:2000), Flow Cytometry (1:100) (Optimal dilution to be determined by the researcher)
Size:	100 µl
Concentration:	0.98 mg/ml

Immunohistochemistry Image:



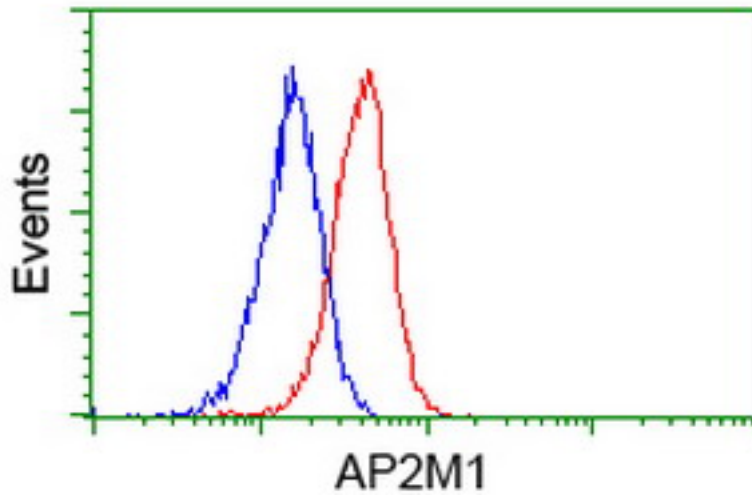
IHC of paraffin-embedded Human Kidney tissue using anti-AP2M1 mouse monoclonal antibody.

Immunohistochemistry Image:



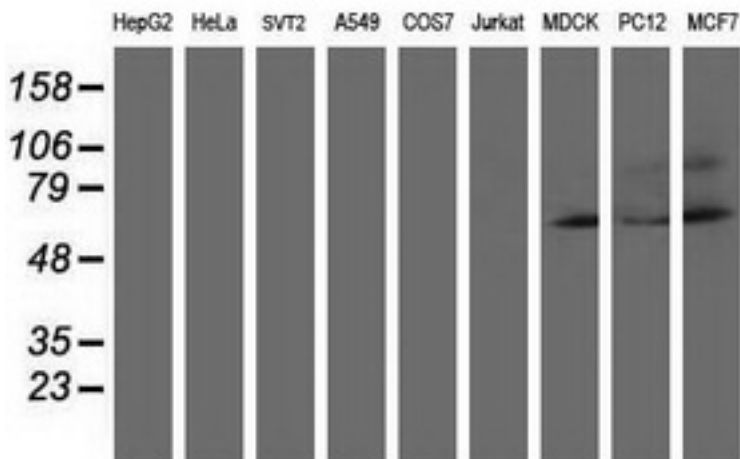
IHC of paraffin-embedded Human colon tissue using anti-AP2M1 mouse monoclonal antibody.

Flow Cytometry Image:



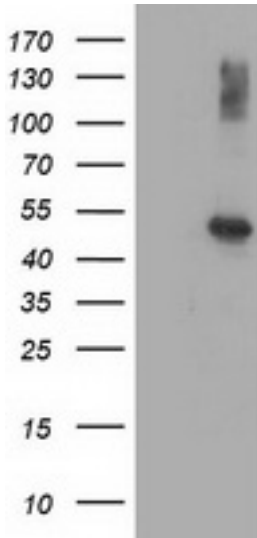
Flow cytometry of Jurkat cells, using anti-AP2M1 antibody (Red), compared to a nonspecific negative control antibody (Blue).

Western Blot Image:



Western blot of extracts (35 ug) from 9 different cell lines by using anti-AP2M1 monoclonal antibody (HepG2: human; HeLa: human; SVT2: mouse; A549: human; COS7: monkey; Jurkat: human; MDCK: canine; PC12: rat; MCF7: human).

Western Blot Image:



HEK293T cells were transfected with the pCMV6-ENTRY control (Left lane) or pCMV6-ENTRY AP2M1 (Right lane) cDNA for 48 hrs and lysed. Equivalent amounts of cell lysates (5 ug per lane) were separated by SDS-PAGE and immunoblotted with anti-AP2M1.

Requested From:

Japan

Laboratory Reagent For In Vitro Research Use Only

Not for resale without prior written consent from LifeSpan BioSciences, Inc.

Created on 9/26/2014

© 2014 LifeSpan BioSciences