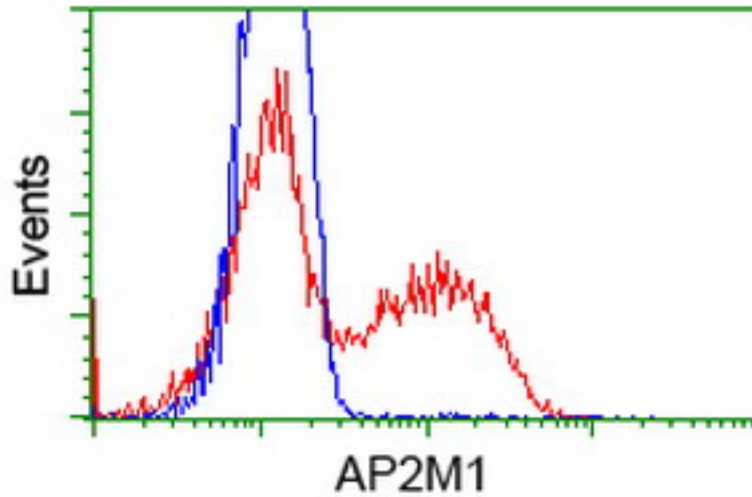


AP50 / AP2M1 Mouse anti-Human Monoclonal (2G2) Antibody - LS-C173015 - LSBio

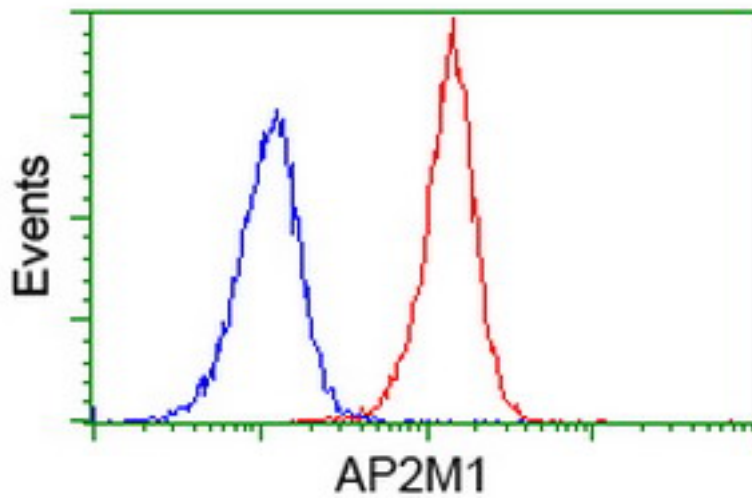
CatalogID:	LS-C173015
Target:	adaptor-related protein complex 2, mu 1 subunit (AP2M1)
Synonyms:	AP2M1 Antibody, Adaptin-mu2 Antibody, AP-2 complex subunit mu Antibody, AP-2 mu 2 chain Antibody, AP-2 mu chain Antibody, AP50 Antibody, CLAPM1 Antibody, Mu2 Antibody, KIAA0109 Antibody, HA2 50 kDa subunit Antibody
Host	AP2M1 antibody was produced in Mouse
Clonality:	Monoclonal
Isotype:	IgG2a
Clone Name:	2G2
Immunogen Species:	AP50 / AP2M1 antibody was raised against Human
Antigen Type:	Recombinant protein
Immunogen:	AP50 / AP2M1 antibody was raised against human recombinant protein fragment corresponding to amino acids 97-383 of human AP2M1 (NP_001020376) produced in E. coli.
Specificity:	Human AP50 / AP2M1
Reactivity:	Human, Mouse
Purification:	Protein A/G purified
Presentation:	PBS, pH 7.3, 1% BSA, 50% glycerol, 0.02% sodium azide
Recommended Storage:	Store at -20°C. Minimize freezing and thawing.
Uses:	Western blot (1:500 - 1:2000), Flow Cytometry (1:100) (Optimal dilution to be determined by the researcher)
Size:	100 µl
Concentration:	0.98 mg/ml

Flow Cytometry Image:



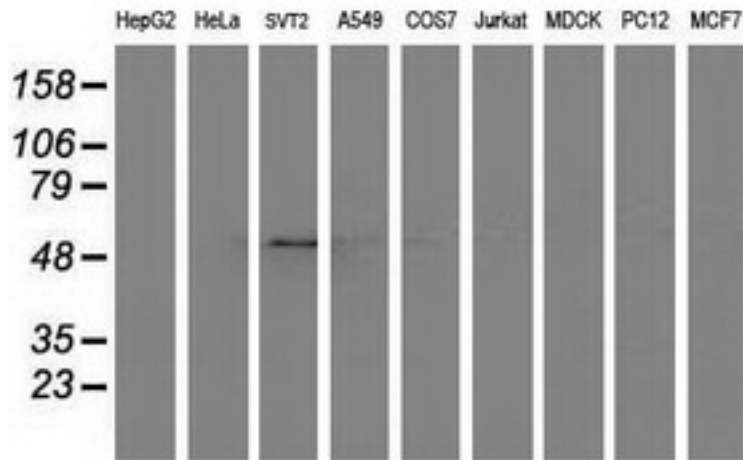
HEK293T cells transfected with either overexpress plasmid (Red) or empty vector control plasmid (Blue) were immunostained by anti-AP2M1 antibody, and then analyzed by flow cytometry.

Flow Cytometry Image:



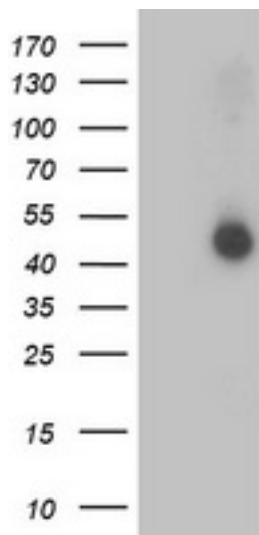
Flow cytometry of Jurkat cells, using anti-AP2M1 antibody (Red), compared to a nonspecific negative control antibody (Blue).

Western Blot Image:



Western blot of extracts (35 ug) from 9 different cell lines by using anti-AP2M1 monoclonal antibody.

Western Blot Image:



HEK293T cells were transfected with the pCMV6-ENTRY control (Left lane) or pCMV6-ENTRY AP2M1 (Right lane) cDNA for 48 hrs and lysed. Equivalent amounts of cell lysates (5 ug per lane) were separated by SDS-PAGE and immunoblotted with anti-AP2M1.

Requested From:

Japan

Laboratory Reagent For In Vitro Research Use Only

Not for resale without prior written consent from LifeSpan BioSciences, Inc.

Created on 9/26/2014

© 2014 LifeSpan BioSciences