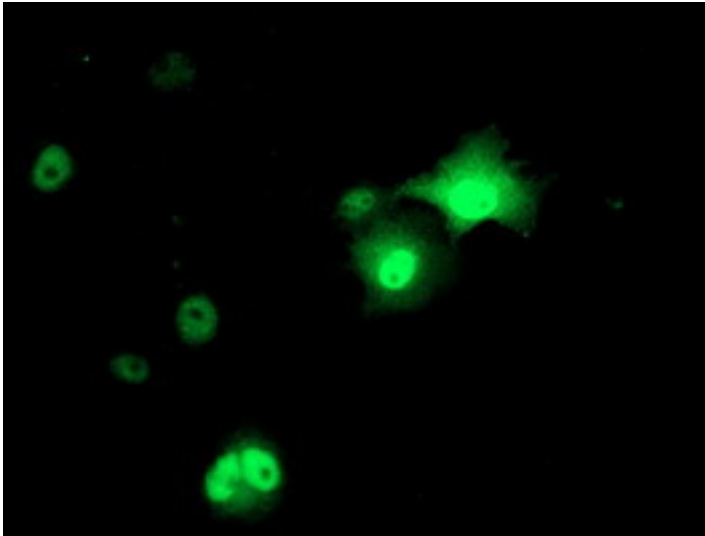


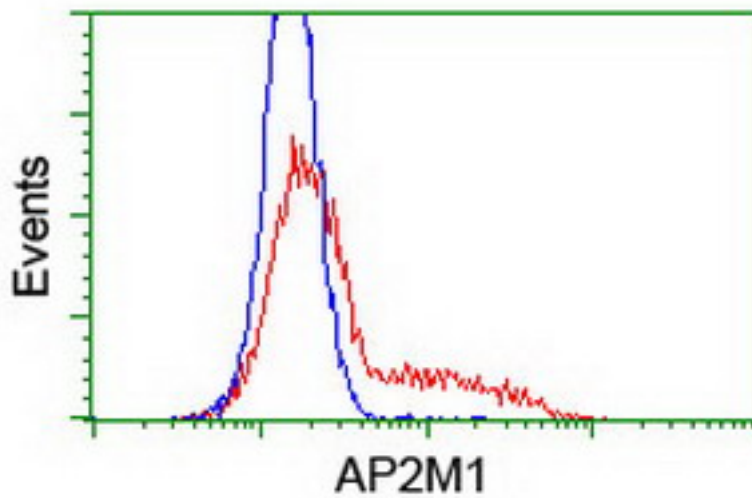
AP50 / AP2M1 Mouse anti-Human Monoclonal (1F10) Antibody - LS-C173014 - LSBio	
<b>CatalogID:</b>	LS-C173014
<b>Target:</b>	adaptor-related protein complex 2, mu 1 subunit (AP2M1)
<b>Synonyms:</b>	AP2M1 Antibody, Adaptin-mu2 Antibody, AP-2 complex subunit mu Antibody, AP-2 mu 2 chain Antibody, AP-2 mu chain Antibody, AP50 Antibody, CLAPM1 Antibody, Mu2 Antibody, KIAA0109 Antibody, HA2 50 kDa subunit Antibody
<b>Host</b>	AP2M1 antibody was produced in Mouse
<b>Clonality:</b>	Monoclonal
<b>Isotype:</b>	IgG2a
<b>Clone Name:</b>	1F10
<b>Immunogen Species:</b>	AP50 / AP2M1 antibody was raised against Human
<b>Antigen Type:</b>	Recombinant protein
<b>Immunogen:</b>	AP50 / AP2M1 antibody was raised against human recombinant protein fragment corresponding to amino acids 97-383 of human AP2M1 (NP_001020376) produced in E. coli.
<b>Specificity:</b>	Human AP50 / AP2M1
<b>Reactivity:</b>	Human
<b>Purification:</b>	Protein A/G purified
<b>Presentation:</b>	PBS, pH 7.3, 1% BSA, 50% glycerol, 0.02% sodium azide
<b>Recommended Storage:</b>	Store at -20°C. Minimize freezing and thawing.
<b>Uses:</b>	Immunofluorescence (1:100), Western blot (1:2000), Flow Cytometry (1:100) (Optimal dilution to be determined by the researcher)
<b>Size:</b>	100 µl
<b>Concentration:</b>	0.87 mg/ml

**Immunofluorescence Image:**



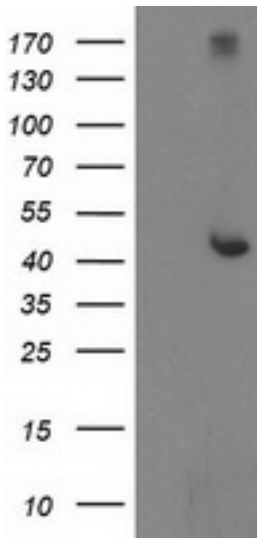
Anti-AP2M1 mouse monoclonal antibody immunofluorescent staining of COS7 cells transiently transfected by pCMV6-ENTRY AP2M1.

**Flow Cytometry Image:**



HEK293T cells transfected with either overexpress plasmid (Red) or empty vector control plasmid (Blue) were immunostained by anti-AP2M1 antibody, and then analyzed by flow cytometry.

**Western Blot Image:**



HEK293T cells were transfected with the pCMV6-ENTRY control (Left lane) or pCMV6-ENTRY AP2M1 (Right lane) cDNA for 48 hrs and lysed. Equivalent amounts of cell lysates (5 ug per lane) were separated by SDS-PAGE and immunoblotted with anti-AP2M1.

**Requested From:**

Japan

Laboratory Reagent For In Vitro Research Use Only

Not for resale without prior written consent from LifeSpan BioSciences, Inc.

Created on 9/26/2014

© 2014 LifeSpan BioSciences