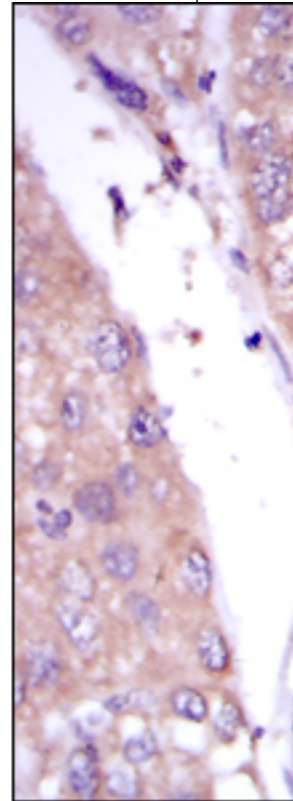
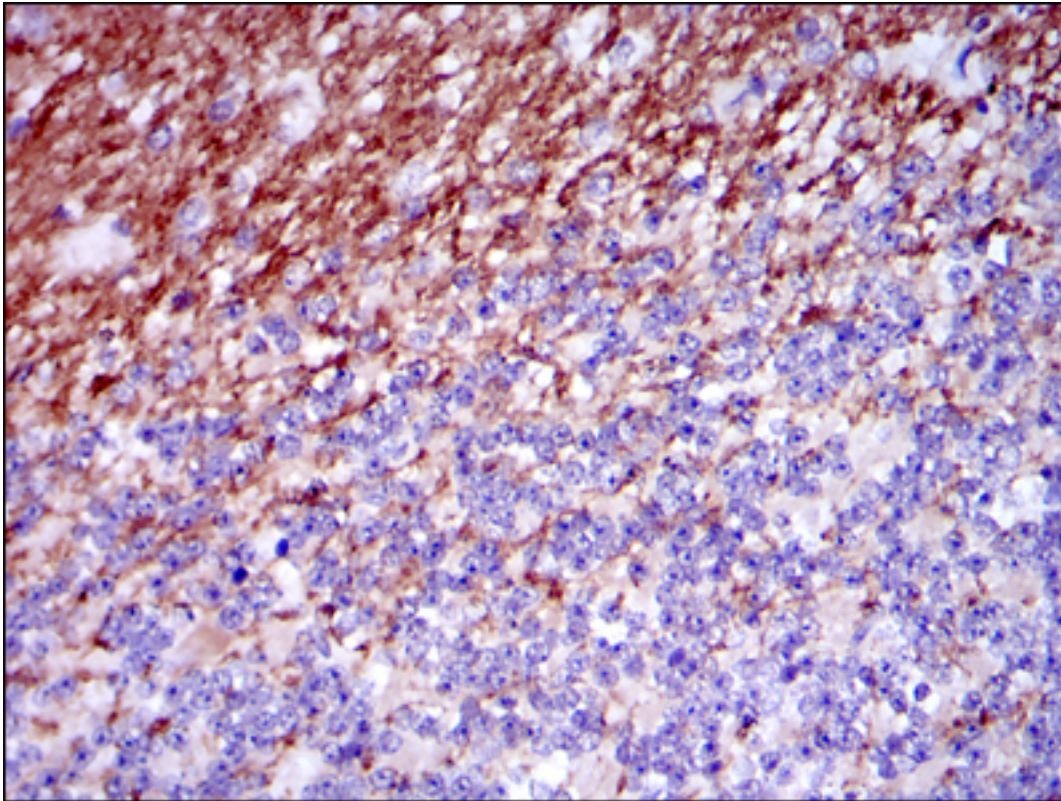


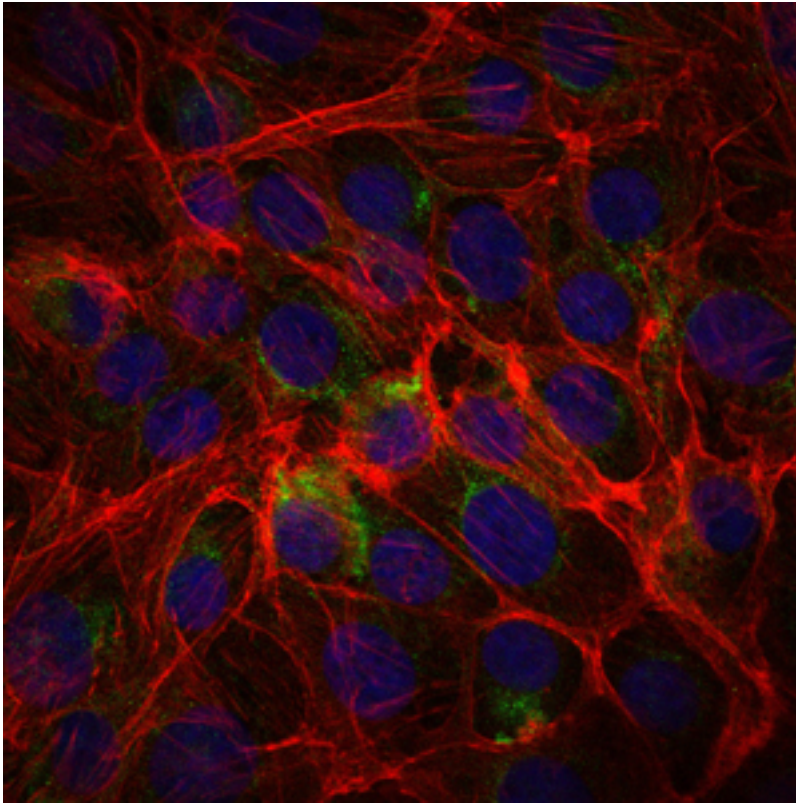
| SSEA-1 / Lewis x / CD15 Mouse anti-Human Monoclonal (4E10) Antibody - LS-C169389 - LSBio |  |
|--|--|
| <b>CatalogID:</b>  | LS-C169389   |
| <b>Target:</b>   | Stage-Specific Embryonic Antigen-1/Lewis X/CD15  |
| <b>Host</b>  | Mouse  |
| <b>Clonality:</b>  | Monoclonal   |
| <b>Isotype:</b>  | IgG1   |
| <b>Clone Name:</b>   | 4E10   |
| <b>Immunogen Species:</b>  | Human  |
| <b>Antigen Type:</b>   | Synthetic peptide  |
| <b>Immunogen:</b>  | Synthesized peptide of human CD15.   |
| <b>Specificity:</b>  | Human CD15   |
| <b>Reactivity:</b>   | Human  |
| <b>Purification:</b>   | Ascites  |
| <b>Presentation:</b>   | Ascites, 0.03% sodium azide  |
| <b>Recommended Storage:</b>  | Long term: -20°C; Short term: +4°C; Avoid freeze-thaw cycles.  |
| <b>Uses:</b>   | IHC (1:200 - 1:1000), ICC (1:200 - 1:1000), Immunofluorescence (1:1000), ELISA (1:10000) (Optimal dilution to be determined by the researcher) |
| <b>Size:</b>   | 100 µl   |

**Immunohistochemistry Image:**



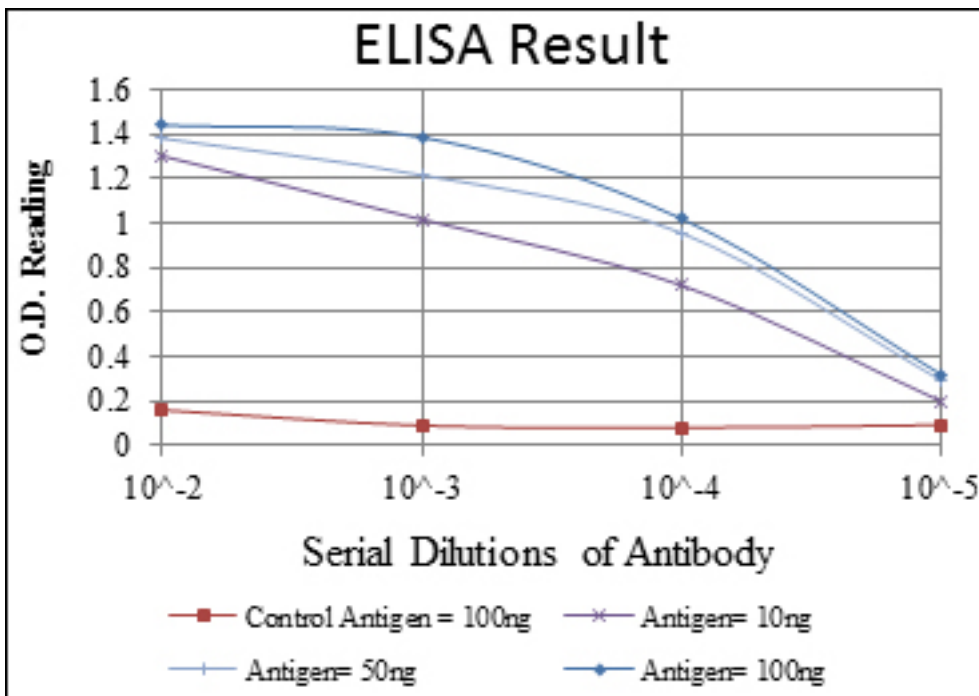
IHC of paraffin-embedded human cerebellum tissues (left) and human liver cancer tissues (right) using CD15 mouse mAb with DAB staining.

**Immunofluorescence Image:**



Immunofluorescence of PC-2 cells using CD15 mouse mAb (green). Blue: DRAQ5 fluorescent DNA dye. Red: Actin filaments have been labeled with Alexa Fluor-555 phalloidin.

**ELISA Image:**



Red: Control Antigen (100ng); Purple: Antigen (10ng); Green: Antigen (50ng); Blue: Antigen (100ng);

|  |       |
|--|-------|
| <b>Requested From:</b>   | Japan |
| Laboratory Reagent For In Vitro Research Use Only                            |       |
| Not for resale without prior written consent from LifeSpan BioSciences, Inc. |       |
| Created on 9/26/2014   |       |
| © 2014 LifeSpan BioSciences  |       |